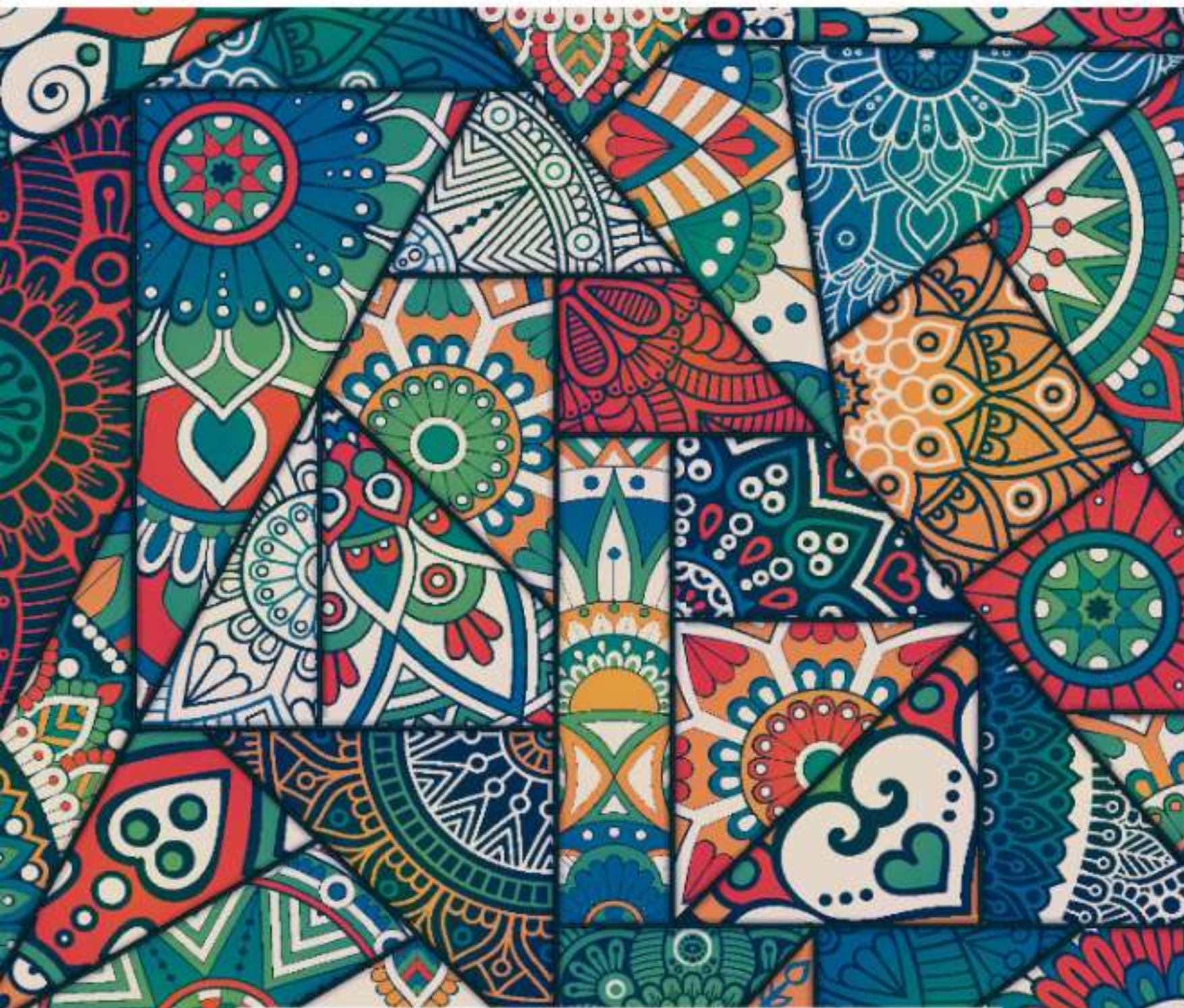




Scan to download the E-Catalogue



www.greenlamindustries.com



*Signature
Art Of India*

CORPORATE OFFICE
Greenlam Industries Limited
2nd Floor, West Wing/Worldmark 1, Aerodrome Airport Hospitality District, New Delhi - 110057,
Tel: 91 11-4279-1399, Email: info@greenlam.com, Website: www.greenlamindustries.com

GREENLAM EXPERIENCE CENTER

<p>Kolkata 305, Free No. 2 & 3, Hose Chof Road, Park Street, Opposite Vivekananda Park - 700016, Contact No. - (+91) 9820-19201, (+91) 4097-35402 Email: experientcenter.kolkata@greenlam.com</p>	<p>Ahmedabad Bhambhani No. 1 & 2, Ground Floor, Block-A, Vastu Square, 50 Highway, Ahmedabad - 380002 Contact No. - (+91) 7980 872277 Email: experientcenter.ahmedabad@greenlam.com</p>
--	--

/greenlamindia
 @greenlamINDIA
 greenlamindustries
 /greenlamindia
 /company/greenlamindustries

985 4038149 (INDIA) TOLL FREE No. 1800 82 1384



Signature

Art Of India

Since, laminates are all about textures and patterns, they find their origin from different cultural art itself.
We exhibit the art of India by bringing out folk art of its different states and regions. A madhubani art from Bihar, kalamkari from West Bengal, tribal art from the north-east etc. Being culturally diverse & distinct in it's variety, these forms have evolved over the years, giving the art a unique sense of admiration in their own might. This way, we also bring in the common thread of culture that binds every tier together.

The incredible journey



Greenlam is among the world's top 3, Asia's largest, and India's No. 1 surfacing solutions brand. With its presence in over 100 countries, Greenlam has focused on developing quality products with a great passion for innovation. It offers end to end surfacing solutions spread across decorative laminates, compact laminates, interior and exterior grade compact laminates, restroom cubicles & locker solutions, decorative veneers, engineered wooden floors and doors.

With three state-of-the-art manufacturing facilities in the country located at Behror (Rajasthan), Nalagarh (Himachal Pradesh) and Prantij (Gujarat), it is the first choice of architects, interior designers, and homeowners when it comes to transforming living spaces.

Greenlam aims and acts to save and preserve nature in its pristine form by ethical sourcing of its raw materials from the world over, thereby ensuring they are environment friendly and safe to use. With its extensive presence of sales team and channel partners globally, Greenlam is poised to meet all your surfacing needs.

- Laminates
- Restroom Cubicles & Locker Solutions
- Compacts
- Decorative Veneers
- Exterior & Interior Clads
- Engineered Wood Floors & Doors

Your *Signature*,
Your *Art*,
Your *Legacy*.



Embrace the timeless beauty of Indian art with GreenTouch, the art-inspired creation from the house of Greenlam. This rich and diverse collection showcases colors and patterns inspired by the artistry of various Indian cultures and regions, including tribal and folk art. The surfaces express the essence of art with their striking designs and bold textures, elevating any space into a one-of-a-kind, captivating masterpiece.

*Signature
Art Of India*





NEW DESIGNS



NEW TEXTURES

Embark

Krysta



Water Resistant

Superior Abrasion Resistant

Exclusive Textures

7 Years Product Warranty

Scratch Resistant

Premium Designs

REASONS TO BELIEVE

State of the Art Manufacturing Facilities

Widest Distribution Network



NEW TEXTURES

Chikankari is a traditional form of embroidery from Lucknow, India. It is done using a fine, white thread on light-colored fabrics such as muslin and cotton. The detailed work is characterized by its delicate and intricate designs. While the motifs and designs are mostly floral, the Paisley motif with a bean-like appearance, has palm leaves, grass stalks, birds and animal motifs like peacock and butterflies, and geometrical and styled patterned motifs, making the art possibilities limitless. Showcasing the pride of India, these textures of GreenTouch is inspired by this historical art of India. Add a piece of elegance to your homely spaces with this range of GreenTouch and bring home Indian art, the pride of India.

A



1802 EBK



1882 EBK
Serena 'Wahut Brown'



A

B

A



1113 EBK
Frosty White



1805 EBK
Verset le Wood



1052 EBK
Grand Walnut



1401 EBK
Black



1881 EBK
Serena Walnut



1

1

2



A



1584 KRS



1583 KRS
Grey Cloud

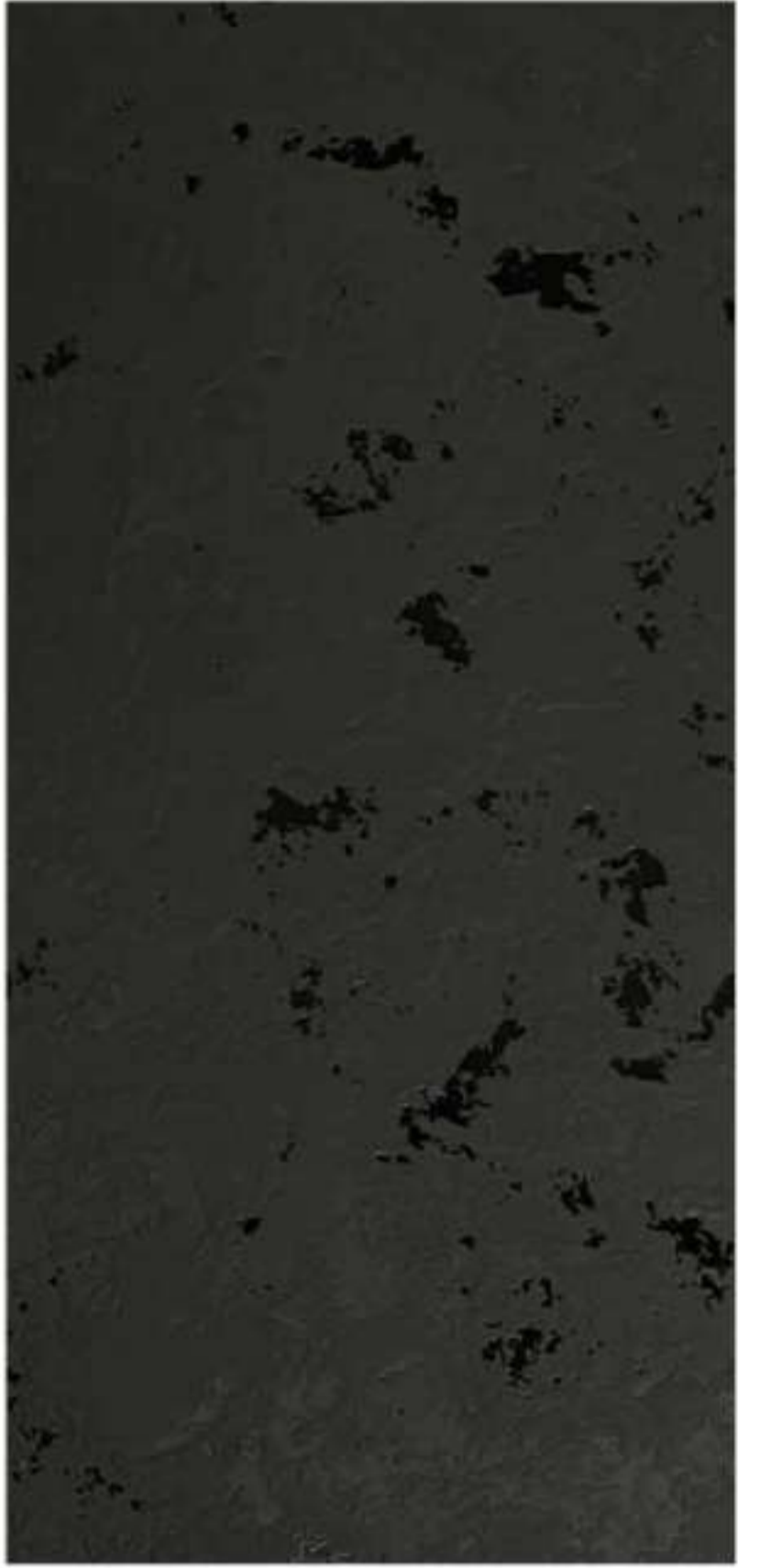


A

B

A

B



1585 KRS
Azara Marble



1584 KRS
Tanara Marble



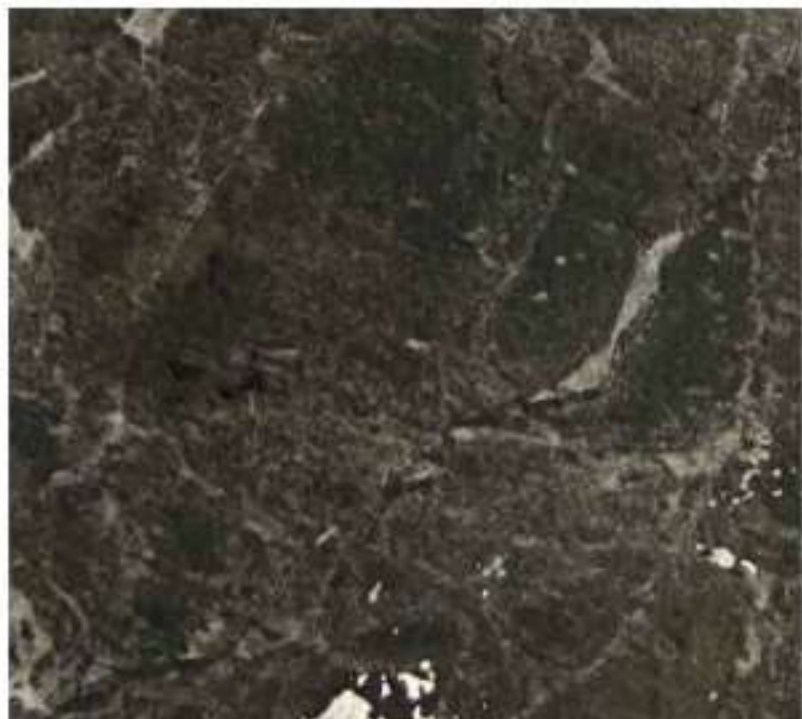
1581 KRS
Elante Sand



1401 KRS
Black



2



1582 KRS
Elante Rock



1586 KRS
Grey Veneto



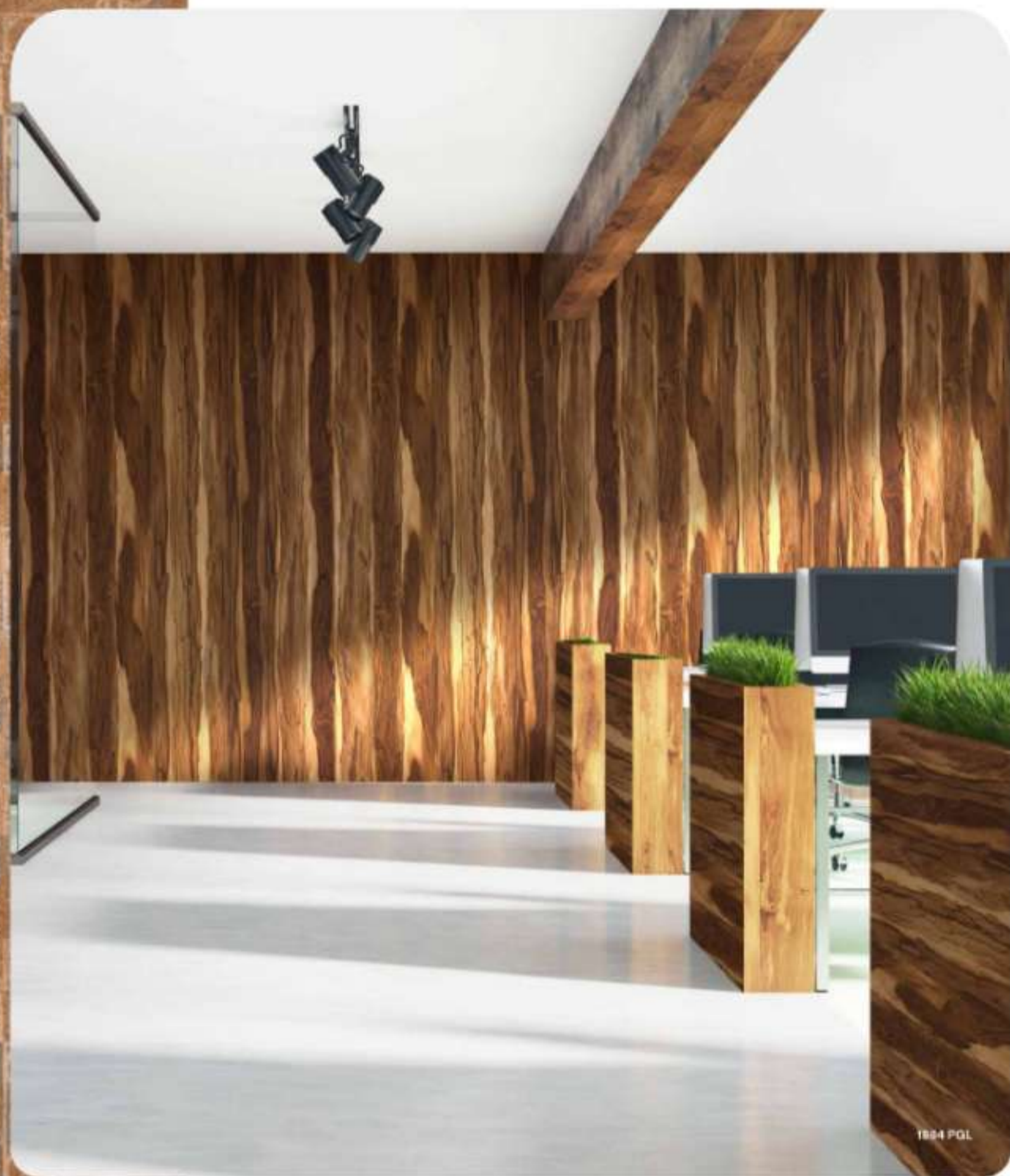
1586 KRS
1584 KRS



TEXTURES

This range is inspired from a popular art of Madhubani. The Madhubani district in Bihar is renowned for its traditional painting style called Madhubani or Mithila Painting. This art form has been practiced for generations in Bihar and is considered one of India's most beloved and recognized forms of art. They depict a diverse range of subjects, from gods and goddesses to everyday scenes of people going about their daily lives. This diversity of themes is what makes Madhubani Painting a timeless and enduring art style. Add a piece of heritage in your home with this range and make it a heritage den.

A



1884 PGL



1884 PGL
Mango Wood

Recommended for vertical applications only and provided with peel coat.

PIANO GLOSS

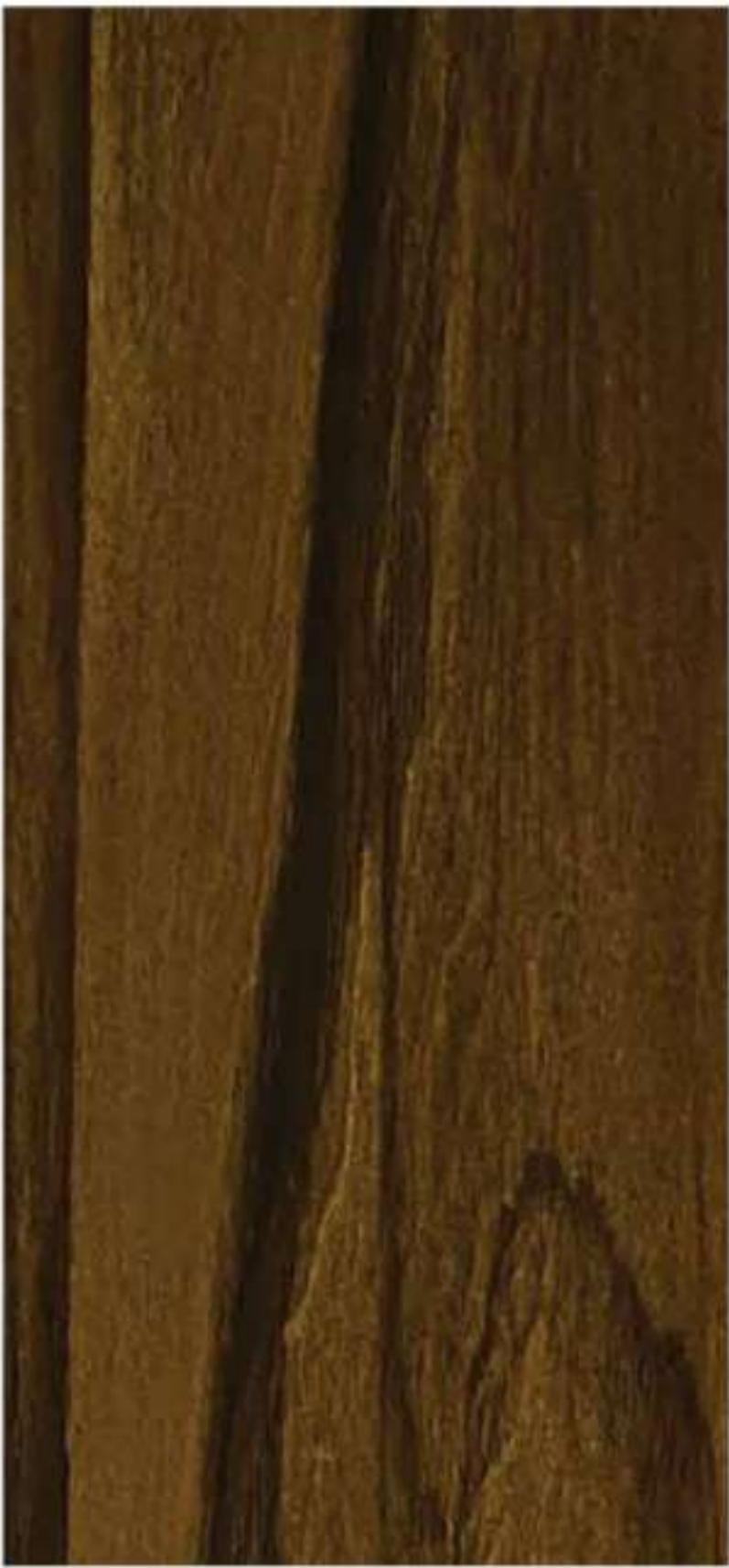
A



1803 PGL
Modern Ash Dark



B



1883PGL
Exotic Wood



A



1880 PGL
Montana Oak



B



1881 PGL
Serena Walnut



2



1802 PGL
Modern Ash Light



1882 PGL
Serena Walnut Brown



1880 PGL

Recommended for vertical applications only and provided with pear coat.



A

B



1804 PGL
Tuscano



1806 PGL
Dato Walnut



1807 PGL
Twig Wood



Recommended for vertical applications only and provided with panel coat.

PIANO GLOSS

A



1875 PGL
Amazon Honey Wood

B



1876 PGL
Amazon Burnt Wood

A



1874 PGL
Mystic Walnut Dark

B



1010 PGL
Ornate Oak

1

1

2

2



1878 PGL
Corsica Brown



1877 PGL
Corsica Honey



1873 PGL
Mystic Walnut Light



1030 PGL
Grim Rhythms

Recommended for vertical applications only and produced with peel coat.

PIANO GLOSS

A



1048 PGL
Himalayan Oak

B



1049 PGL
Indian Oak

A



1031 PGL
Elm

B



1036 PGL
Fresh Lumber

2



1013 PGL
Nilambur Wood

2



1088 PGL
Novel Beech



1872 PGL
Allure Dark



1871 PGL
Allure Natural

Recommended for vertical applications only and protected with peel coat.

PIANO GLOSS

A



1034 PGL
Smoked Pine

B



1032 PGL
Modfish Elm

A



1448 PGL
Divine Oak

B



1050 PGL
Silver Oak

2



1711 PGL
Siem Toak



1051 PGL
Ashen Oak

2



1059 PGL
Rare Metal



1058 PGL
Noble Metal

Recommend for vertical applications only and provided with pest coat

A



1585 PGL
Azara Marble



A



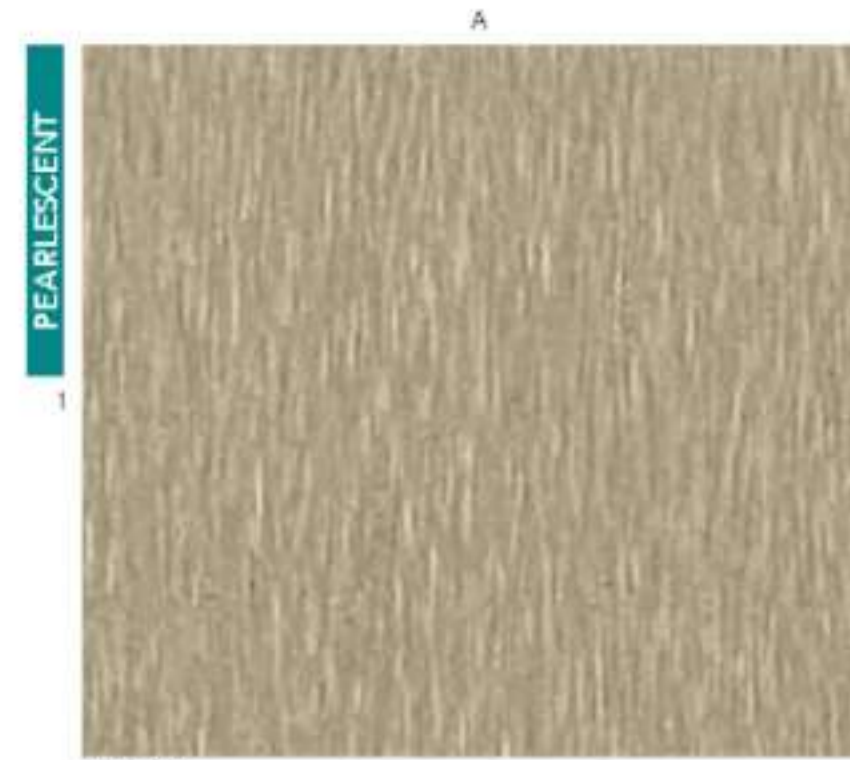
1584 PGL
Tanara Marble



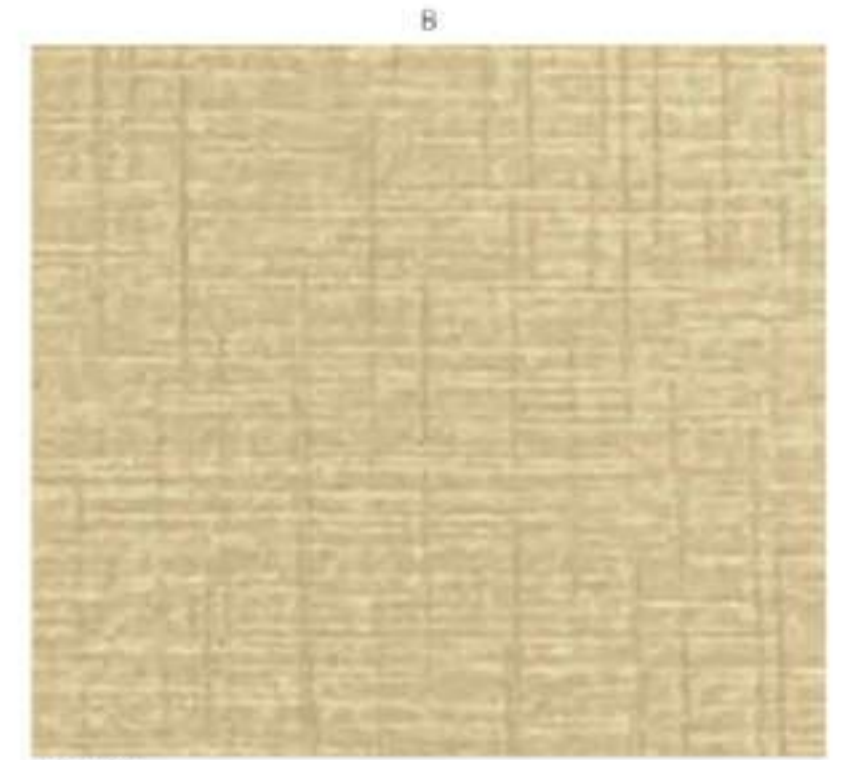
PIANO GLOSS-ABSTRACTS



PIANO GLOSS-ABSTRACTS



1972 PGL
Hedj Metal



1569 PGL
Buff Linen



1583 PGL
Grey Cloud



1586 PGL
Grey Veneto



1581 PGL
Elante Sand



1582 PGL
Elante Rock

Recommended for vertical applications only and provided with pearl coat.

A

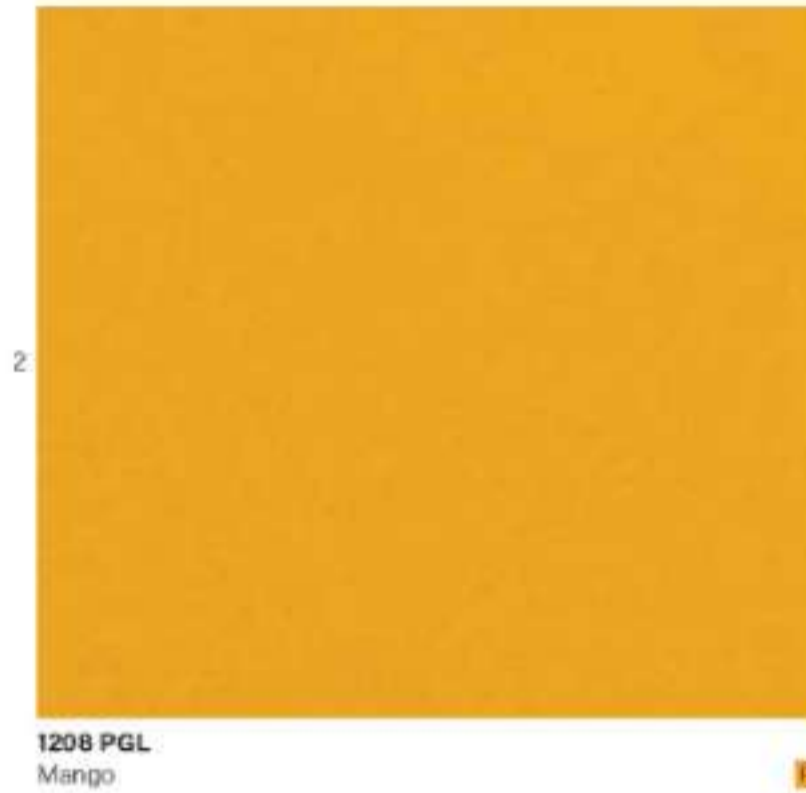
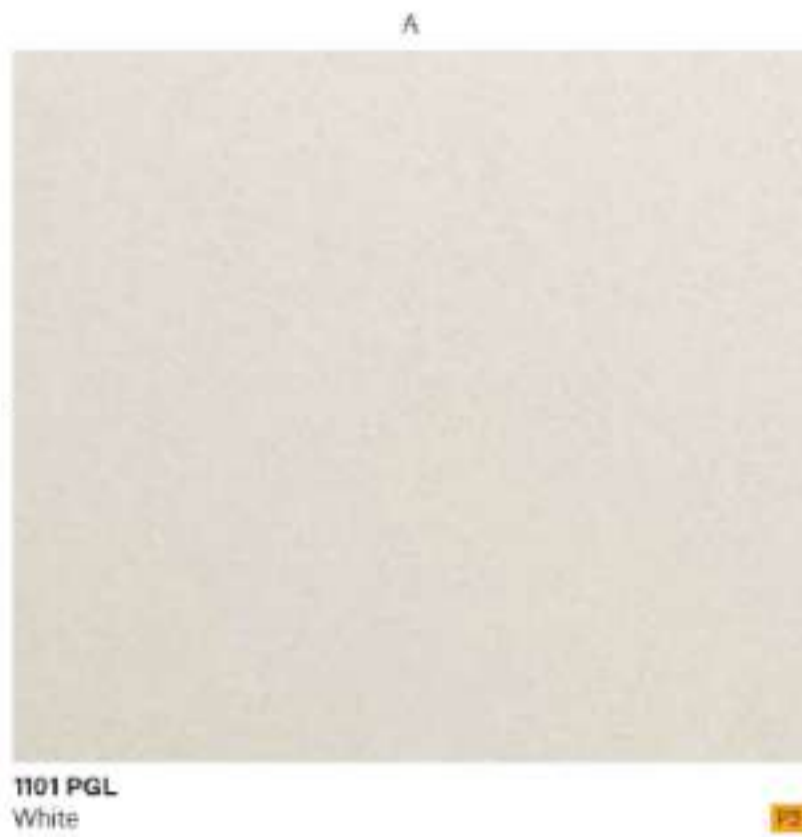
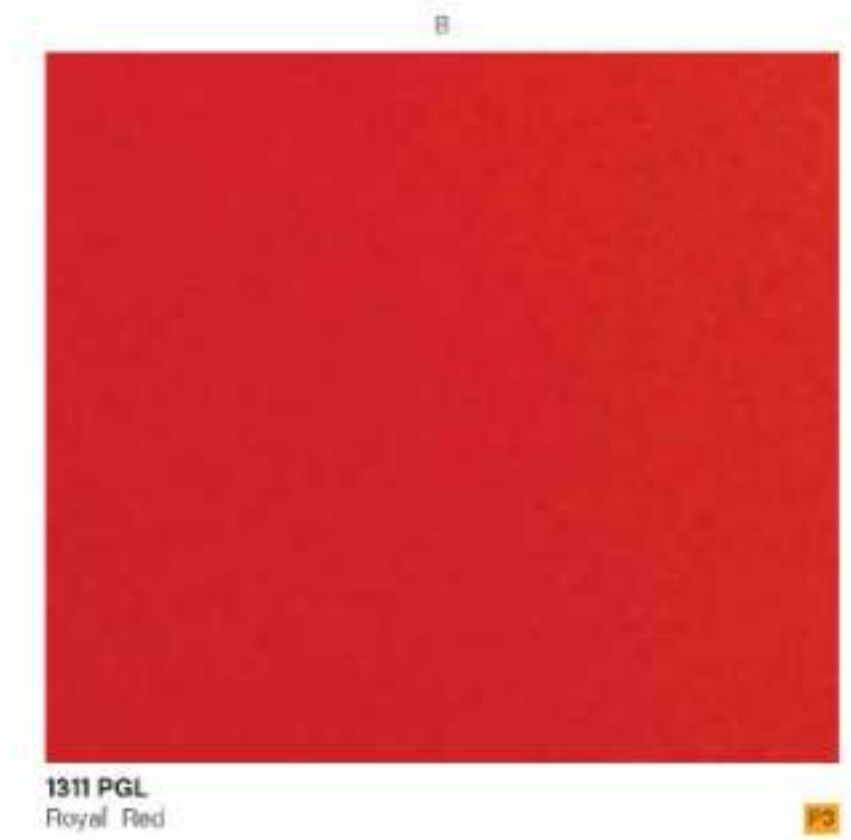
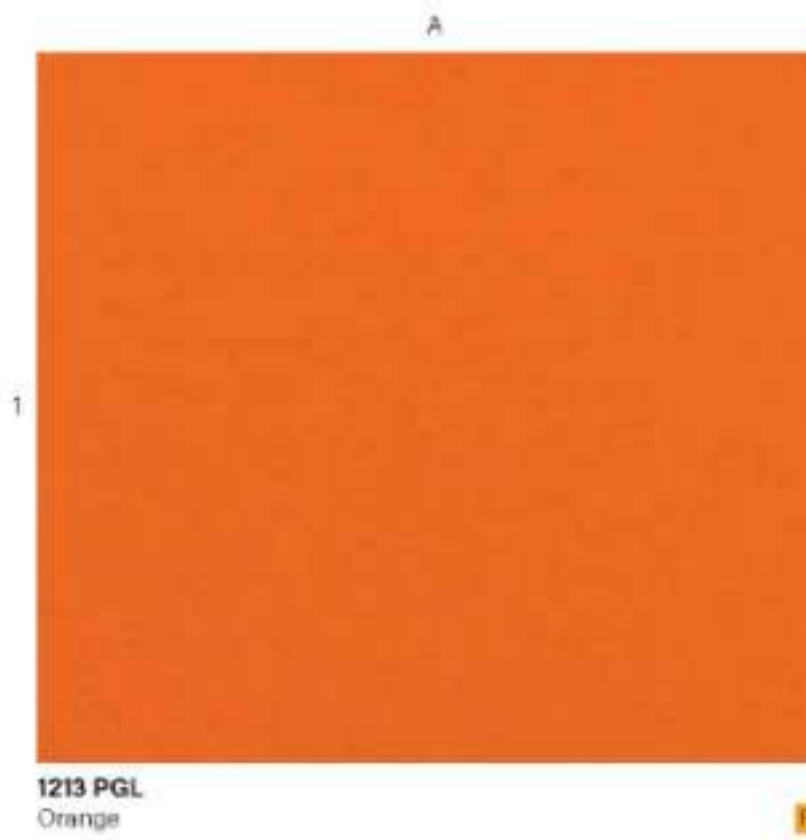


1351 PGL
Brick Red

PIANO GLOSS-SOLIDS



PIANO GLOSS-SOLIDS



A



1462 PAR



1085 PAR
Wenge Crown

A



1077 PAR
Choco Walnut



B



1462 PAR
Jamaican Teak



A



1805 PAR
Versatile Wood



B



1879 PAR
Burr Oak



1

1



1061 PAR
Brown Nut Cherry



1041 PAR
Versailles Walnut



2



1401 PAR
Black



1113 PAR
Frosty White



A



1013 WWS



1013 WWS
Nilambur Wood

WOOD WASH

A



1076 WWS
Coastal Walnut



B



1056 WWS
Dakota



A



1011 WWS
Beaver Oak



B



1034 WWS
Smoked Pine



2



1012 WWS
Espresso Oak



1014 WWS
Greige Oak



A



1880 VEC



1805 VEC
Versatile Wood

A



1880 VEC
Montana Oak



B



1039 VEC
Virginis Walnut



A



1021 VEC
Pure Apple



B



1551 VEC
Light Broad



2



1054 VEC
Variance



1056 VEC
Dakota



1039 VEC

2



1569 VEC
Buff Liren



A



1542 BST



1542 BST
Aster Dark

A

B

A

B



1476 BST
Smoked Oak



1105 BST
Arctic White



1090 BST
Push Groves



1022 BST
Native Walnut



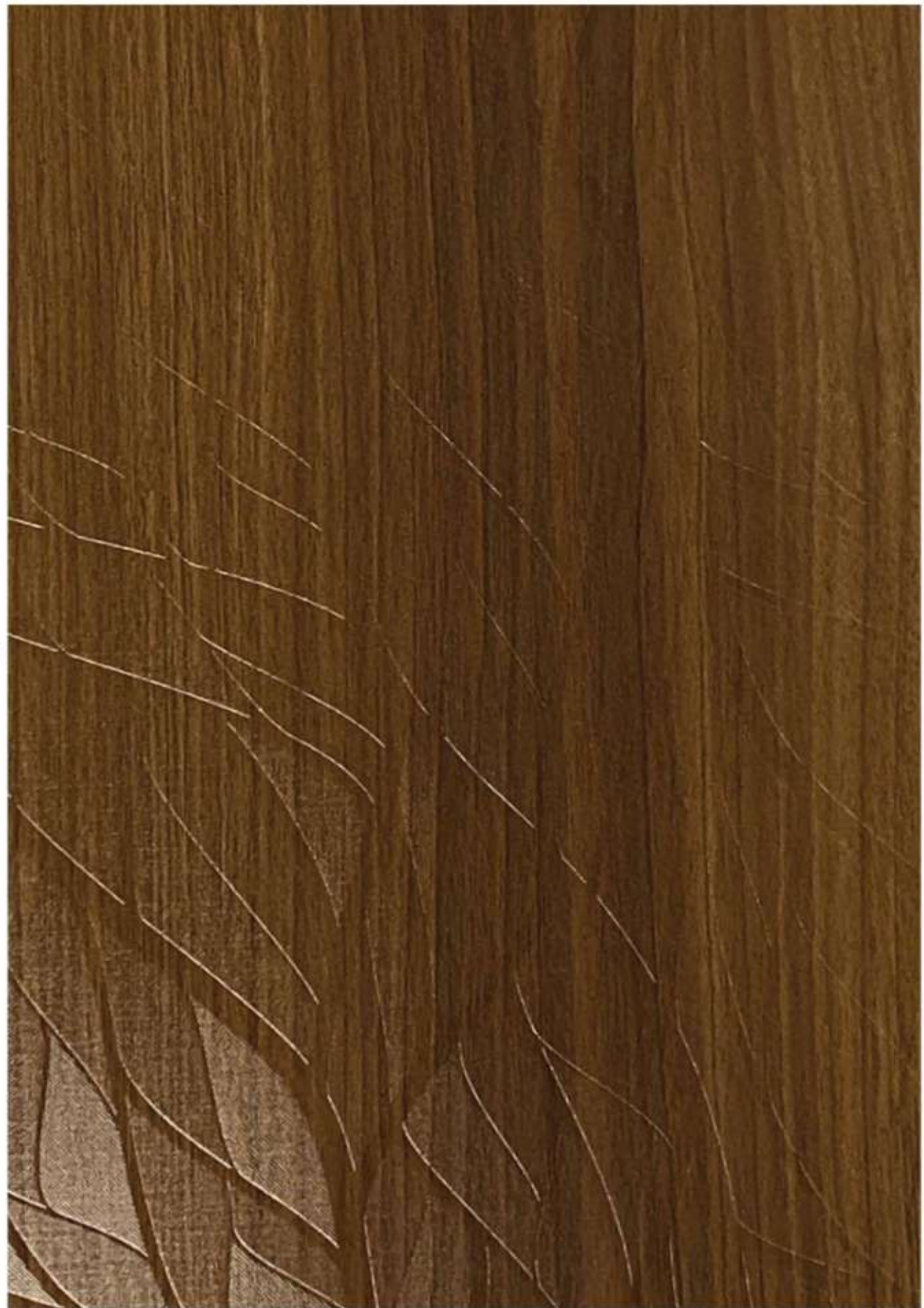
1541 BST
Aster Light



1541 BST

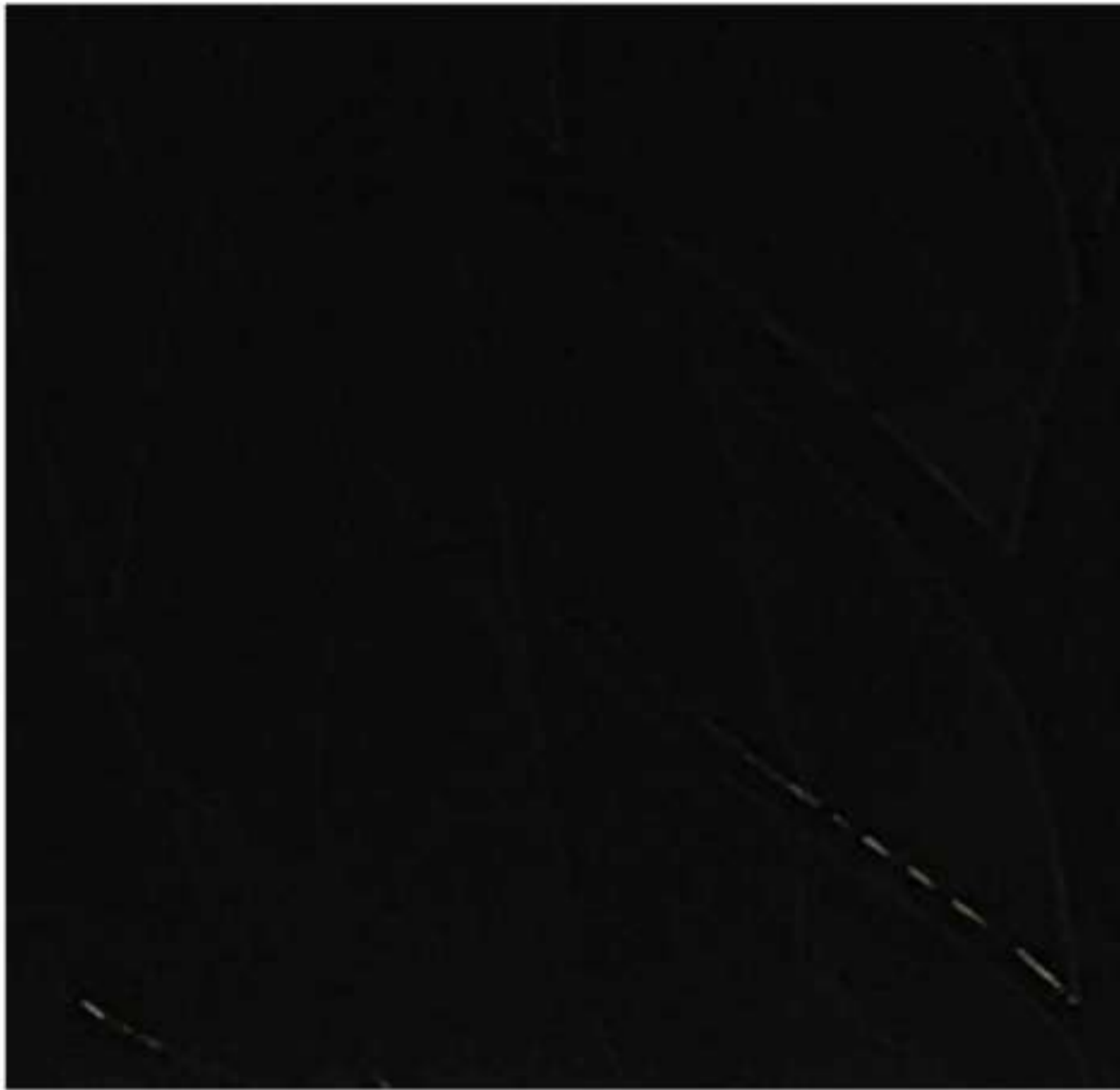


1036 LEF



1053 LEF
Sienna Wood

A



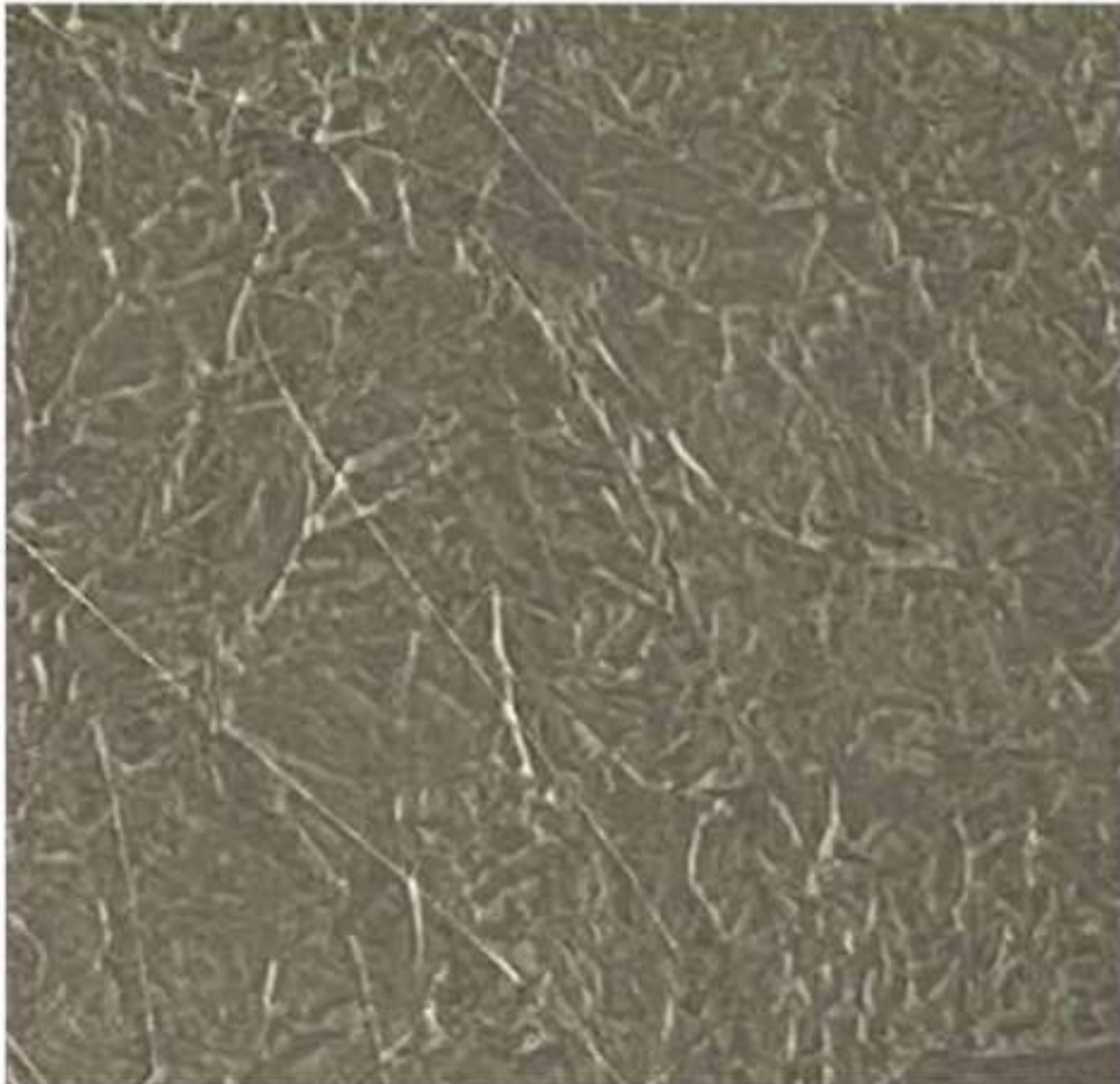
1

1401 LEF
Black



1401 LEF

B



2

1578 LEF
Raw Yarn Grey



1577 LEF
Raw Yarn Beige



A



2

1874 LEF
Mystic Walnut Dark



B

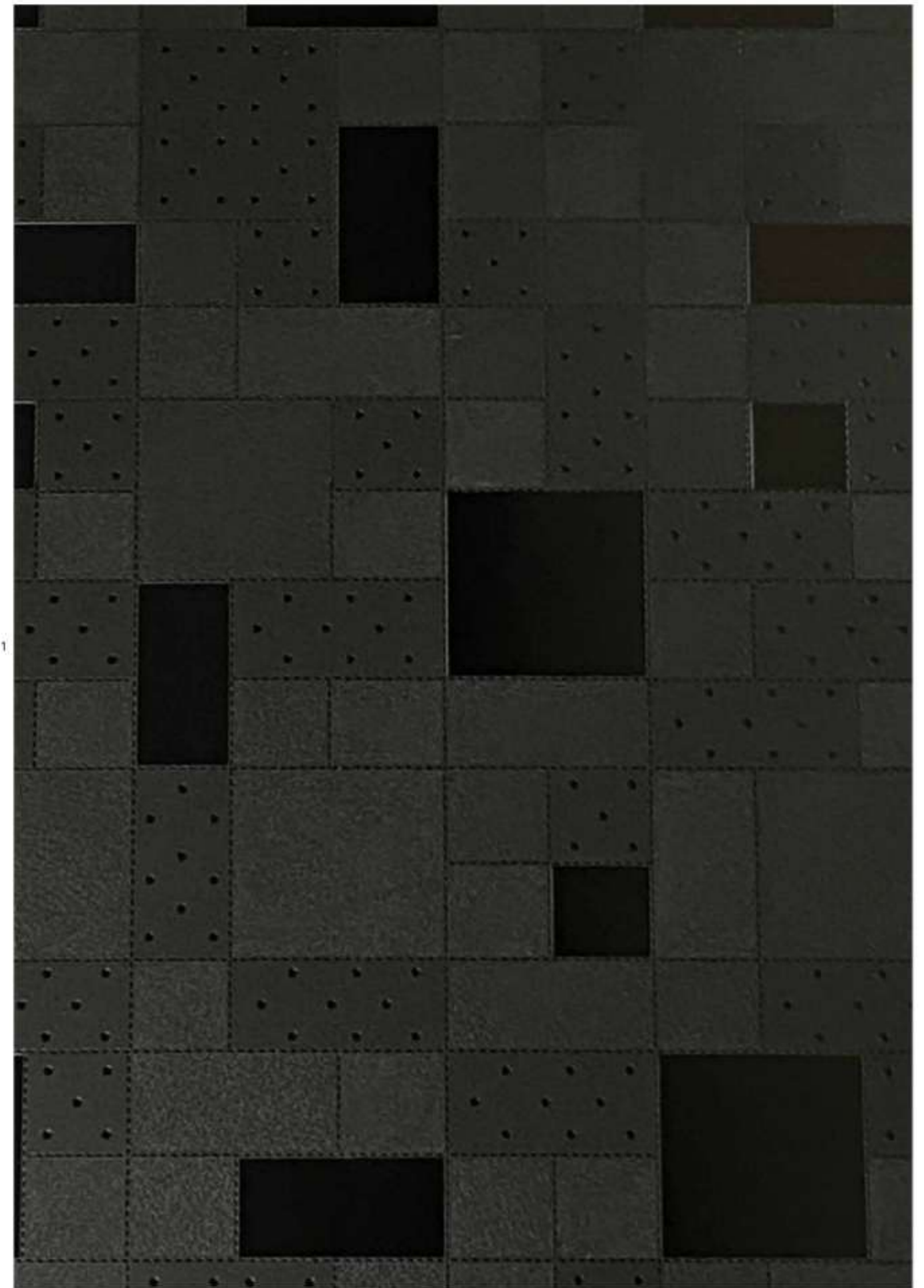


1036 LEF
Fresh Lumber





1069 UBL



1401 UBL
Black

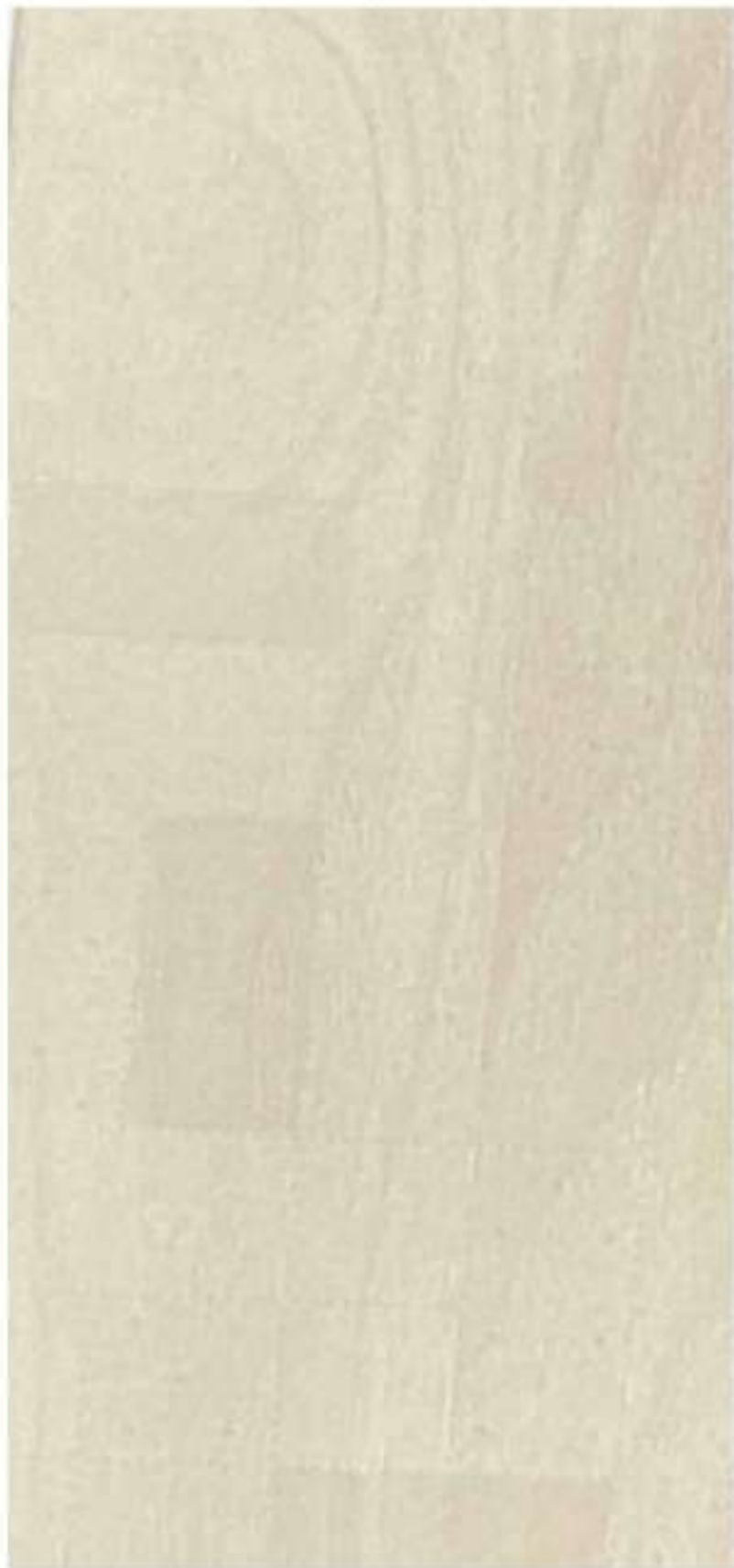
URBAN LEATHER

URBAN LEATHER



A

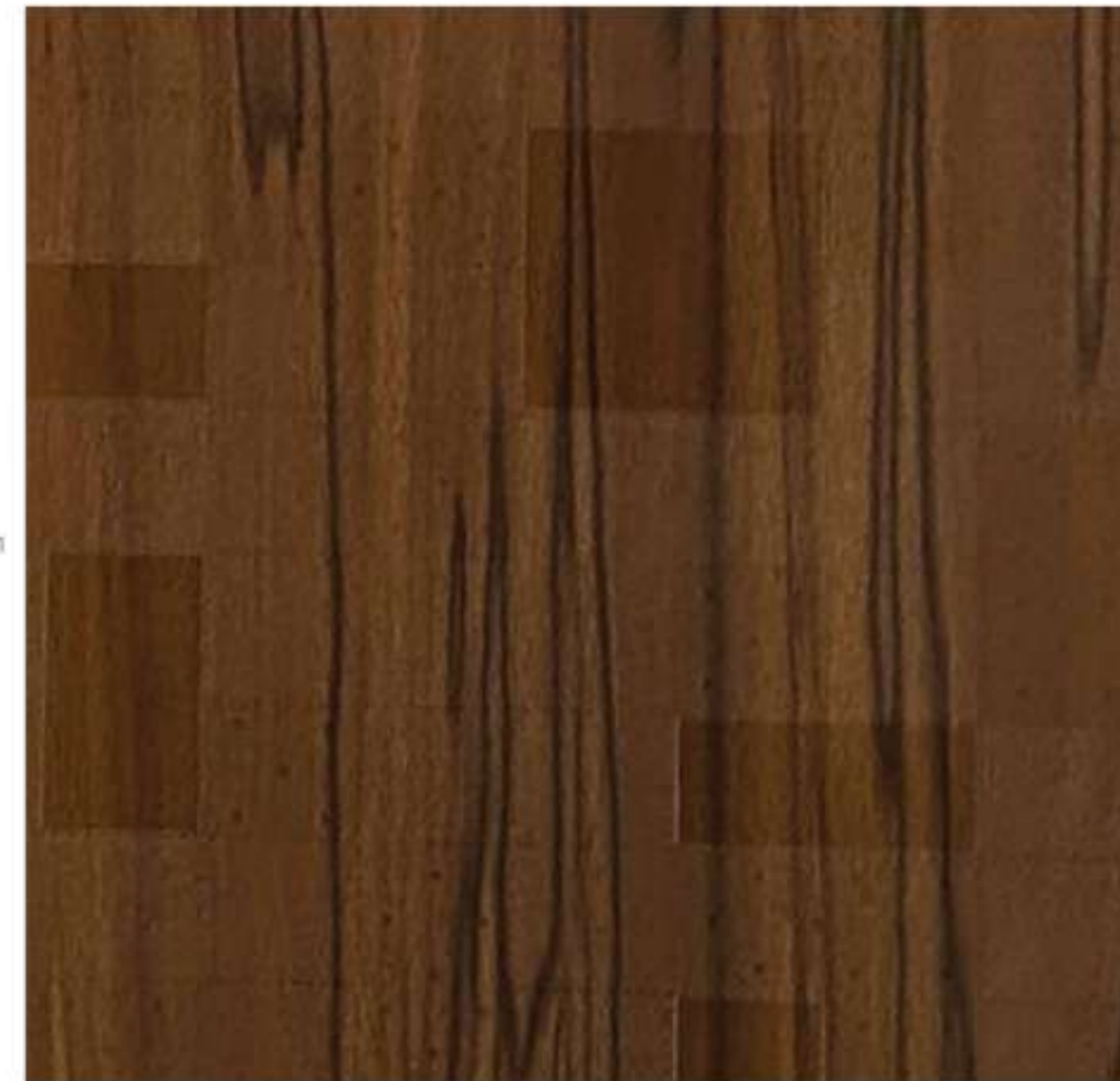
B



1038 UBL
White Walnut



1064 UBL
Cherry Berry



1089 UBL
Beech Marvel



1105 UBL
Arctic White



1012 UBL
Espresso Oak



1010 UBL
Ornate Oak



A



1564 MAT



1687 MAT
Kerana Flores

MATT

A

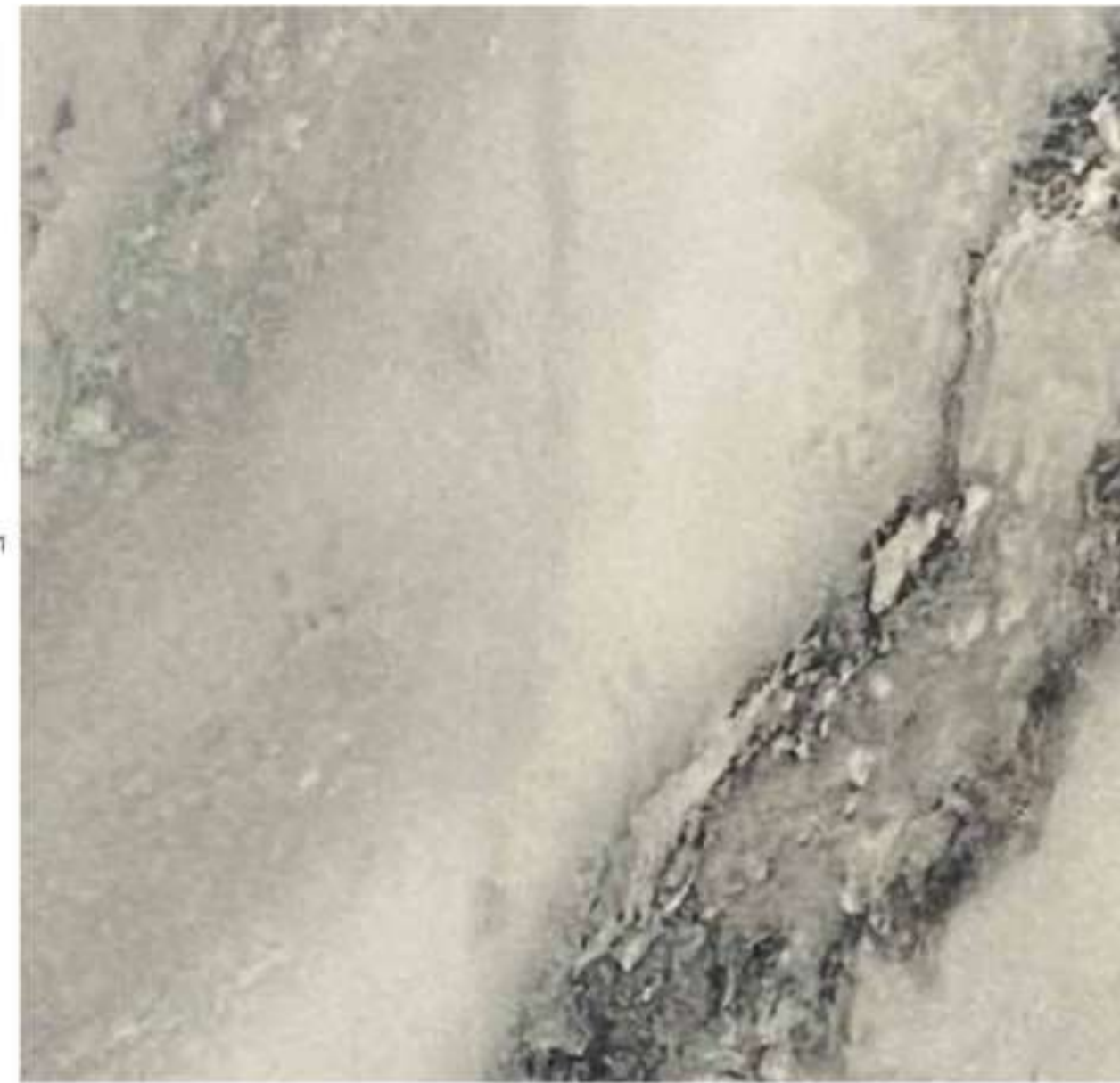


1584 MAT
Tanara Marble



MATT

A



1583 MAT
Grey Cloud



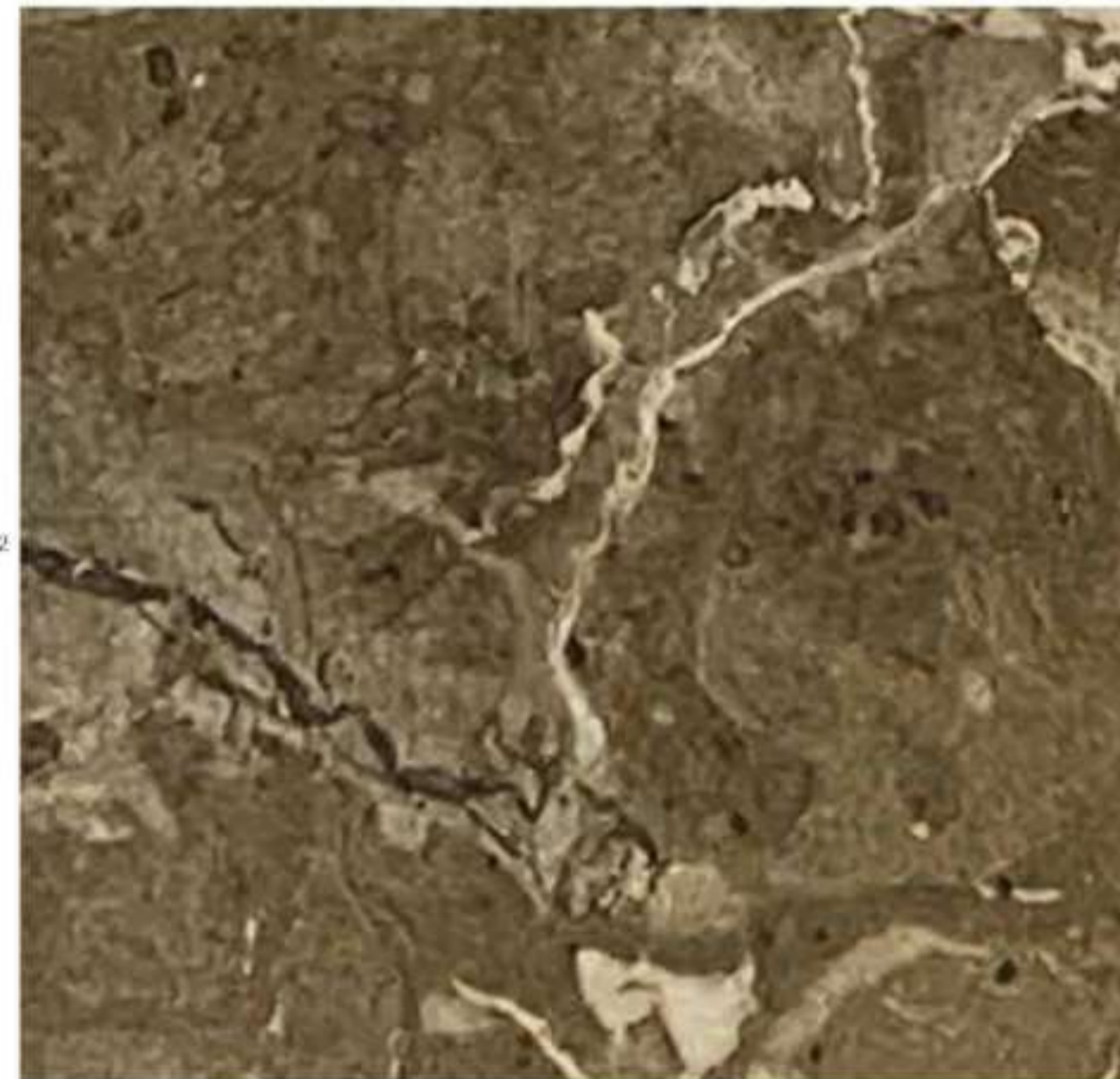
B



1586 MAT
Grey Veneto



2



1585 MAT
Azera Marble



1582 MAT
Elante Rock



CURLS

A



1052 CUR
Grand Walnut

FS

A



1801 CUR
Sapele Brunet

FS

B



1401 CUR
Black

FS

2



1291 CUR
Electric Blue

FS



1113 CUR
Frosty White

FS

CURLS



A

B



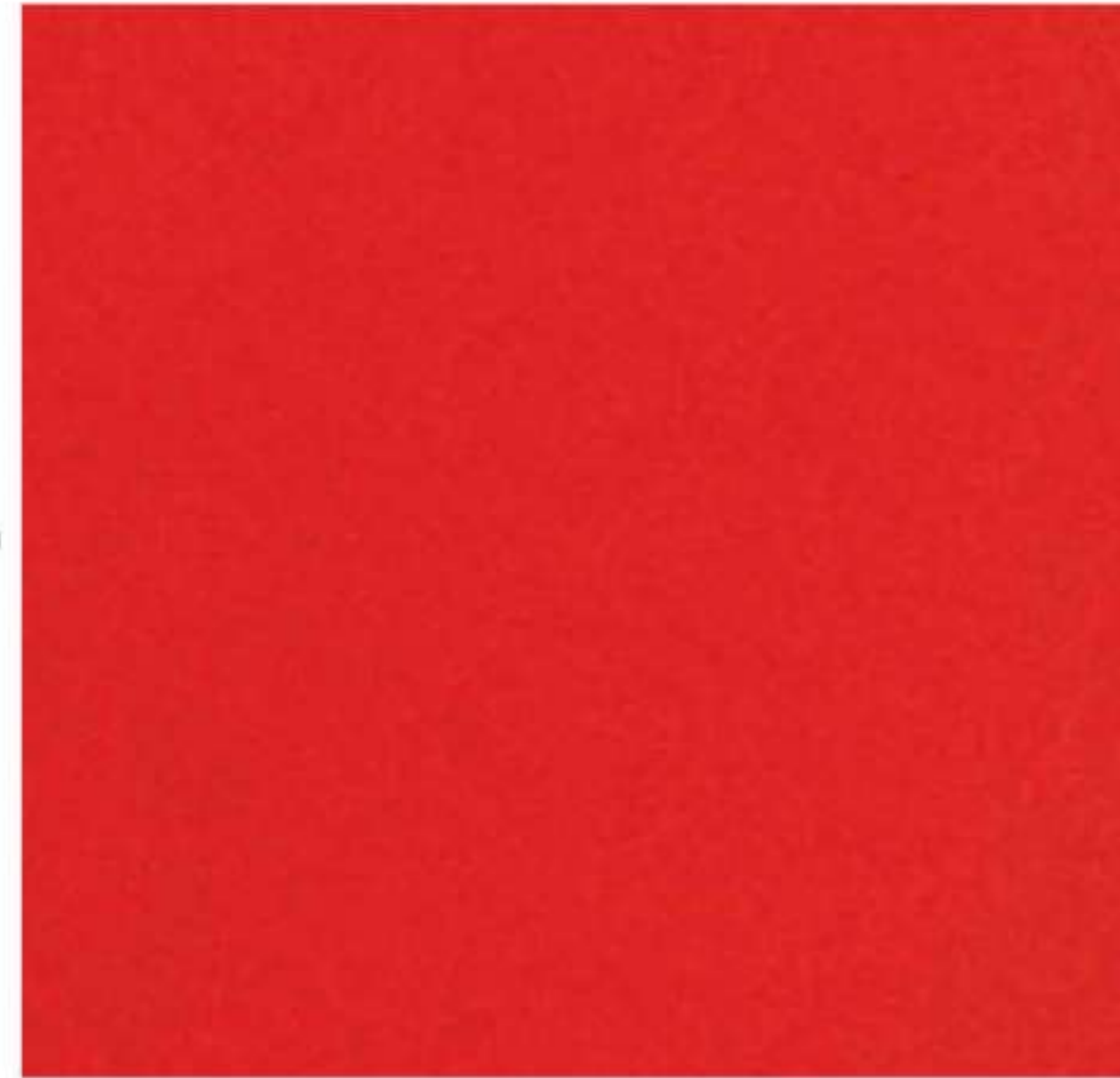
1874 MRC
Mystic Walnut Dark

PS



1302 MRC
Mist

PS



1311 MRC
Royal Red



1052 MRC
Grand Walnut

PS



1101 MRC
White



1299 MRC
Dark Blue

PS

1

2



WOODGRAINS

Block prints of India are everlasting forms of Indian folk art. This range is inspired from the famous Rajasthani block print, Bagru which originates from a small village of Rajasthan. The original Bagru style of printing traditionally uses floral, leaf and geometric motifs on textile. These are hand carved wooden blocks and naturally sourced dye that makes Bagru an authentic art. However, in recent decades, designers from the west have worked closely with these local artisans to create Indo-western patterns which are inspired by art and nature which gives it a much more contemporary look and keeps the art alive.

A



1806 SUD
Datos Walnut

N

A



1803 SUD
Modern Ash Dark

N

WOODGRAINS

A



1883 SUD
Exotic Wood



B



1807 SUD
Twig Wood



A



1059 SUD
Rare Metal

B



1058 SUD
Noble Metal

2



1884 SUD
Mango Wood



1022 SUD
Native Walnut

2



1675 SUD
Amazon Honey Wood



1057 SUD
Vienna Walnut

3



1881 SUD
Serena Walnut



1010 SUD
Ornata Oak

3



1678 SUD
Corsica Brown



1877 SUD
Corsica Honey

WOODGRAINS

A



1452 SUD
Light Oak

B



1702 SUD
Cherry

A



1045 SUD
Indian Rosewood

WOODGRAINS

B



1031 SUD
Elm

2



1804 SUD
Tuscano

H



1012 SUD
Espresso Oak

2



1075 SUD
Alder Ale



1074 SUD
Maple Glen

3



1088 SUD
Novel Beech



1079 SUD
Natural Wine

3



1034 SUD
Smoked Pine



1033 SUD
Highland Pine

WOODGRAINS

WOODGRAINS



1882 SUD
1886 SUD

A

B



1072 SUD
Sugarcoat Maple



1874 SUD
Mystic Walnut Dark

A

B



1054 SUD
Variance



1021 SUD
Pure Apple

2



1044 SUD
Stately Walnut



1039 SUD
Virginia Walnut

WOODGRAINS

A



1872 SUD
Allure Dark

B



1871 SUD
Allure Natural

A



1882 SUD
Serena Walnut Brown

B



1077 SUD
Choco Walnut

1

1

2

2



1430 SUD
Washington Cherry



1060 SUD
Cherry Lite



1041 SUD
Versailles Walnut



1701 SUD
Rising Beech

WOODGRAINS

A



1029 SUD
Fair Rhythms

B



1073 SUD
Pyrus Pear

A



1070 SUD
Woolly Zebra

WOODGRAINS

B



1076 SUD
Coastal Walnut

2



1061 SUD
Brown Nut Cherry



1432 SUD
Caspian Anigre

2



1032 SUD
Modish Elm



1062 SUD
Colossal Beech

3



1064 SUD
Cherry Berry



1036 SUD
Fresh Lumber

3



1047 SUD
Zebra Grey



1436 SUD
Gork Oak

A



1805 SUD
Versatile Wood

11



A

B



1051 SUD
Ashen Oak



1095 SUD
Vintage Grove

WOODGRAINS

A



1876 SUD
Amazon Burnt Wood

B



1097 SUD
Liquid Lumber

A



1602 SUD
Modern Ash Light

WOODGRAINS

B



1038 SUD
White Walnut

2



1014 SUD
Greige Oak



1448 SUD
Divine Oak

2



1438 SUD
Spanish Oak



1042 SUD
Stately Larch

3



1046 SUD
Reco Wood



1015 SUD
Rustic Pine

3



1880 SUD
Montana Oak



1056 SUD
Dakota

WOOGRAINS

WOODGRAINS



1879 SUD
Burr Oak



1053 SUD
Sienne Wood



1085 SUD
Wenge Crown



1481 SUD
Sugar Teak



1084 SUD
Wenge Enigma



1434 SUD
Willow Oak



1437 SUD
Scarlet Oak



1050 SUD
Silver Oak

WOODGRAINS

A



1873 SUD
Mystic Walnut Light

B



1055 SUD
Alliance Oak

A



1476 SUD
Smoked Oak

B



1086 SUD
Honey Maple

2



1801 SUD
Sapele Brunet



1463 SUD
Lacquered Teak

2



1815 SUD
G. T. Nayana Teak



1711 SUD
Siam Teak

WOODGRAINS

A



1089 SUD
Beech Marvel

B



1011 SUD
Beaver Oak

A



1049 SUD
Indian Oak

B



1449 SUD
Oak Ripple

2



1013 SUD
Nilambar Wood



1030 SUD
Gira Rhythm

2



1464 SUD
Blazing Teak



1462 SUD
Jemison Teak

3



1090 SUD
Plush Grove



1043 SUD
Reco Teak

3



1052 SUD
Grand Walnut



1048 SUD
Himalayan Oak

WOODGRAINS-HORIZONTAL



A

B



1509 SUD
Butternut Pecan

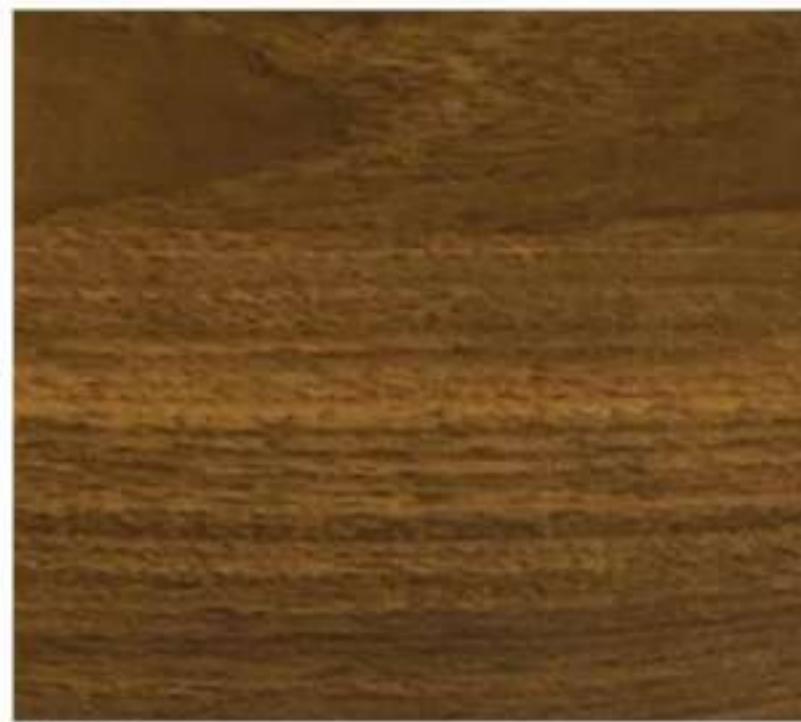


1507 SUD
Butternut Warm

WOODGRAINS-HORIZONTAL

A

B



1508 SUD
Butternut Brown



1504 SUD
Frosty Teak



1510 SUD
Butternut Choccolate



1506 SUD
Coco Teak



ABSTRACTS

This range is inspired from one of the oldest forms of embroidery originating from India, Kantha whose origins can be traced back to the pre-Vedic age (prior to 1500 BCE). Kantha is a traditional form of embroidery from India, mainly practiced by rural women in the states of West Bengal, Bihar, and Odisha. The motifs used in kantha embroidery typically depict everyday scenes, nature, and religious or mythological figures. The art form is known for its simplicity, yet it creates rich and detailed designs. The meaningful motifs make for a beautiful abstract for your home and brings in the essence of rural India to your spaces.

ABSTRACTS

ABSTRACTS



A

E

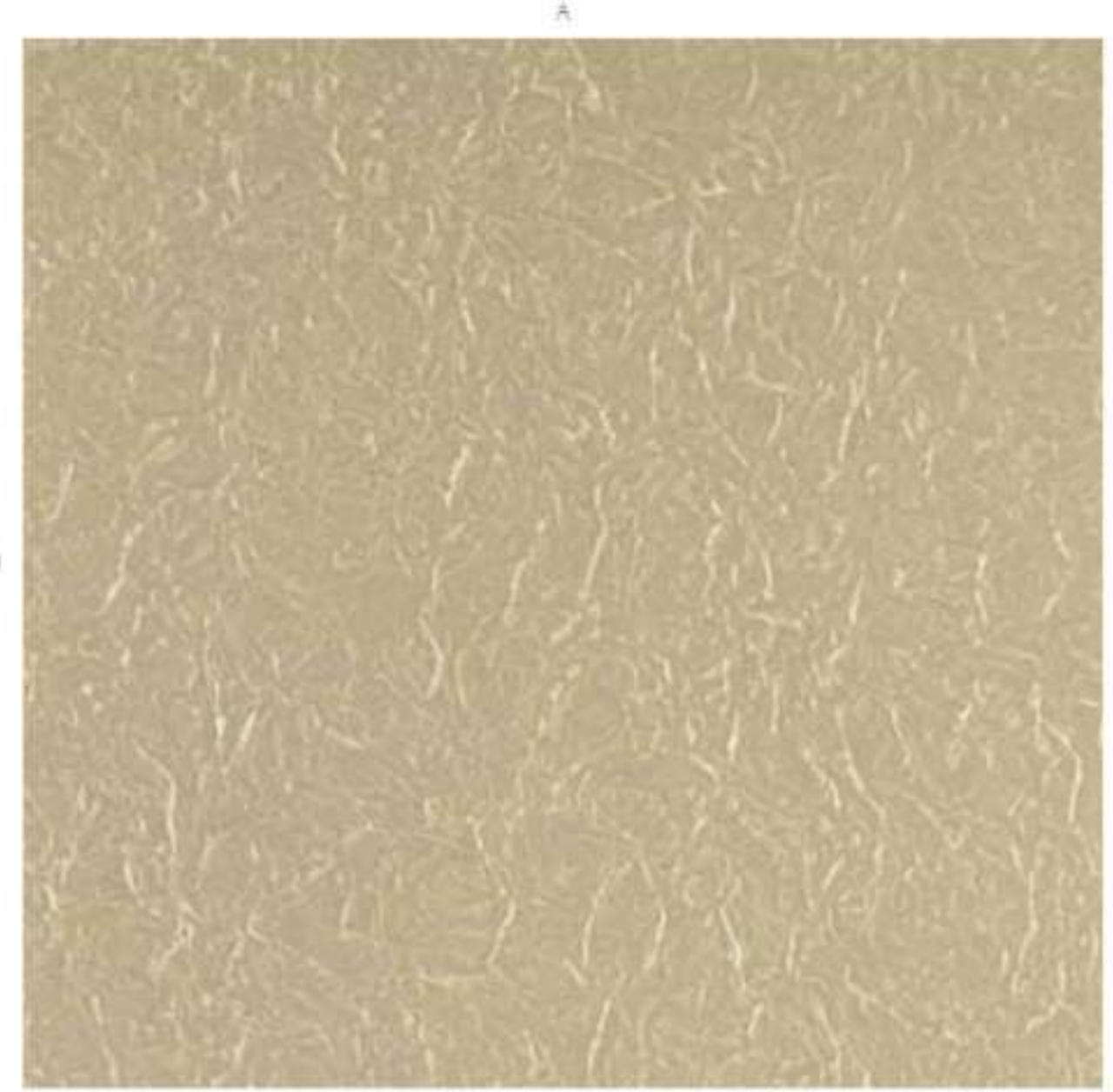
1541 SUD



1541 SUD
Aster Light



1542 SUD
Aster Dark



1577 SUD
Raw Yarn Beige



1578 SUD
Raw Yarn Grey



1560 SUD
Cric de Brown



1579 SUD
Crackle Beige



ABSTRACTS

A



1569 SUD
Buff Linen

B



1565 SUD
Fels Herringbone

A



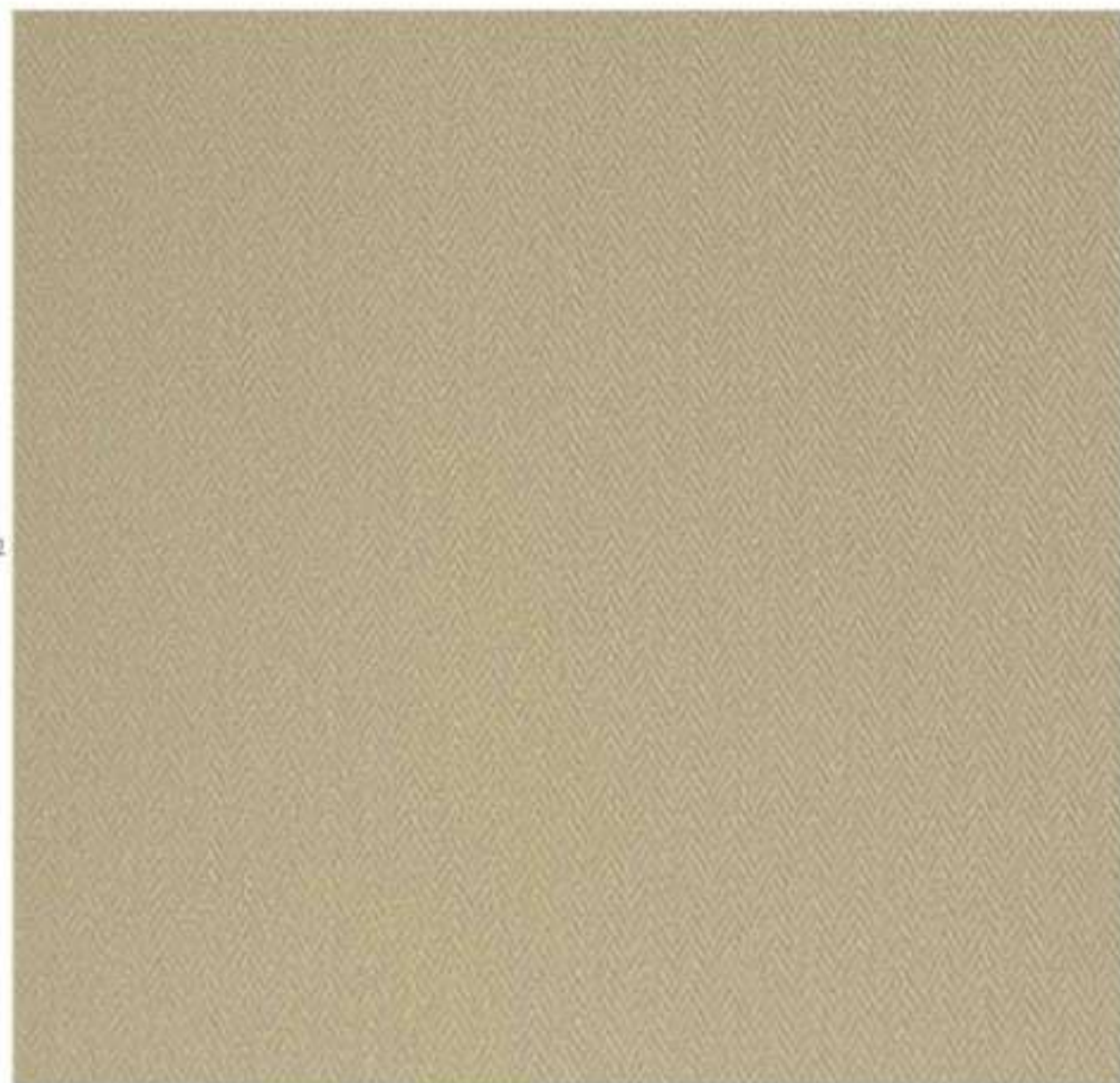
1572 SUD
Cornet Grey

B



1571 SUD
Cornet White

2



1566 SUD
Camel Herringbone

2



1567 SUD
Grey Herringbone



1552 SUD
Beige Braid



1551 SUD
Light Braid



METALS

CHALK & MARKER GRADE



4952 BRD



1354 CGD

Recommended for vertical applications only and provided with peel coat.

A

E



4951 BRD
Silky Silver

4952 BRD
Steely

A

B



1101 MGD
White

1100 MGD
Checkers

2



1354 CGD
Army Green

1401 CGD
Black

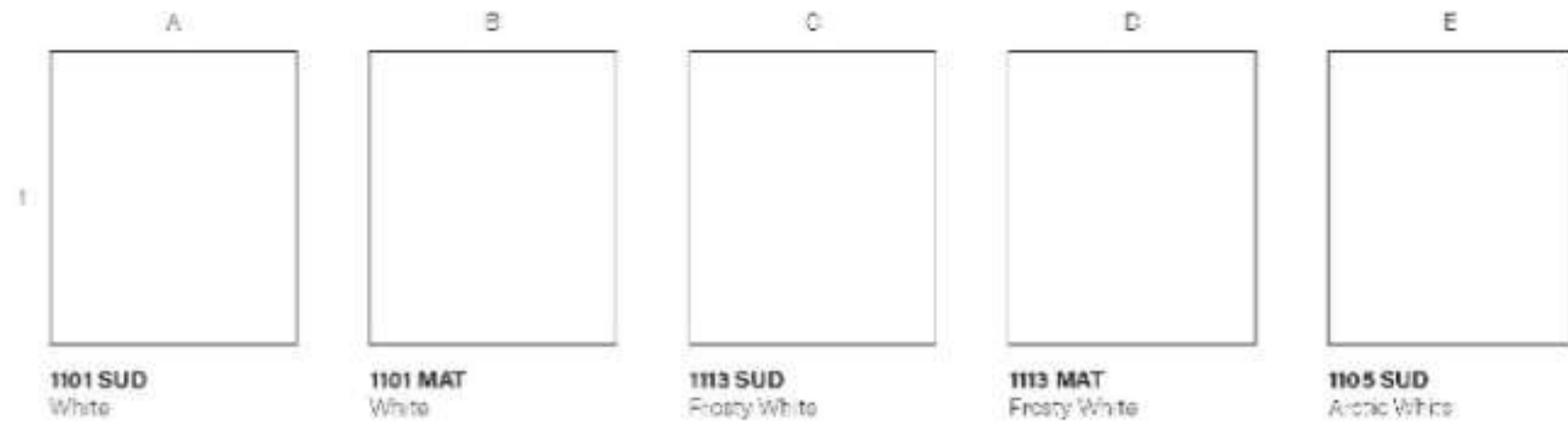




SOLIDS

This range is inspired from the very famous, Phulkari art of India. This is a traditional form of embroidery from the Punjab region of India. The word "phulkari" literally means "flower work". The designs in Phulkari are simple and geometrical, usually featuring large flowers, birds, and other nature-inspired motifs with the use of bold and bright colours. The Phulkari is an important part of Punjabi culture, and it is traditionally created and worn by women. It is a cultural art form, passed down through generations of women and today has been repurposed and adapted as a part of home decor and fashion items.

SOLIDS - POPULAR



SOLIDS



SOLIDS



INDEX

D.No.	Finish	D.Name	Page	Row	Col
1010	SUD	Onate Oak	75	3	B
1010	PGL	Onate Oak	26	1	B
1010	UBL	Onate Oak	62	2	B
1011	SUD	Beaver Oak	93	1	B
1011	WWS	Beaver Oak	46	1	A
1012	SUD	Espresso Oak	77	2	B
1012	UBL	Espresso Oak	62	2	A
1012	WWS	Espresso Oak	45	2	A
1013	SUD	Niambur Wood	93	2	A
1013	PGL	Niambur Wood	27	2	A
1013	WWS	Niambur Wood	44	1	A
1014	SUD	Grage Oak	67	2	A
1014	WWS	Grage Oak	45	2	B
1015	SUD	Rubi Pine	67	3	B
1021	SUD	Pure Apple	79	1	B
1021	VEC	Pure Apple	51	1	A
1022	SUD	Native Walnut	75	2	B
1022	BST	Native Walnut	54	1	B
1029	SUD	Fair Rhythm	83	1	A
1030	SUD	Gym Rhythm	93	2	B
1030	PGL	Gym Rhythm	26	2	B
1031	SUD	Em	76	1	B
1031	PGL	Em	28	1	A
1032	SUD	Middish Elm	84	2	A
1032	PGL	Middish Elm	28	1	B
1033	SUD	Highland Pine	76	3	B
1034	SUD	Smoked Pine	76	3	A
1034	PGL	Smoked Pine	29	1	A
1034	WWS	Smoked Pine	46	1	B
1036	SUD	Fresh Lumber	83	3	B
1036	PGL	Fresh Lumber	28	1	B
1036	LEF	Fresh Lumber	68	2	B
1038	SUD	White Walnut	88	1	B
1038	UBL	White Walnut	61	1	A
1039	SUD	Virginia Walnut	81	2	B
1039	VEC	Virginia Walnut	43	1	B
1041	SUD	Versalet Walnut	82	2	A
1041	PAR	Versalet Walnut	41	2	B
1042	SUD	Stately Larch	68	2	B
1043	SUD	Reco Teak	93	3	B
1044	SUD	Stately Walnut	81	2	A
1045	SUD	Indian Rosewood	76	1	A
1046	SUD	Reco Wood	81	3	A
1047	SUD	Zebra Grey	84	3	A
1048	SUD	Himalayan Oak	94	3	B
1048	PGL	Himalayan Oak	27	1	A
1049	SUD	Hidden Oak	94	1	A
1049	PGL	Hidden Oak	27	1	B
1050	SUD	Silver Oak	90	2	B
1050	PGL	Silver Oak	31	1	B
1051	SUD	Ashen Oak	86	1	A
1051	PGL	Ashen Oak	25	2	B
1052	SUD	Grand Walnut	94	3	A
1052	CUR	Grand Walnut	67	1	A
1052	MRO	Grand Walnut	70	1	B
1052	EBK	Grand Walnut	11	2	A
1053	SUD	Sienna Wood	89	1	B
1053	LEF	Sienna Wood	58	1	A
1054	SUD	Venano	79	1	A
1054	VEC	Venano	49	2	A
1055	SUD	Alliance Oak	91	1	B
1056	SUD	Dakota	68	3	B
1056	VEC	Dakota	49	2	B
1056	WWS	Dakota	45	1	B
1057	SUD	Vienna Walnut	76	2	B
1058	SUD	Noble Metal	76	1	B
1058	PGL	Noble Metal	31	2	B
1059	SUD	Rare Metal	76	1	A
1059	PGL	Rare Metal	31	2	A
1060	SUD	Cherry Lite	61	2	B
1061	SUD	Brown Nut Cherry	63	2	A
1061	PAR	Brown Nut Cherry	41	2	A
1062	SUD	Cobalt Beach	84	2	B
1064	SUD	Cherry Berry	63	3	A
1064	UBL	Cherry Berry	61	1	B
1070	SUD	Woody Zebano	84	1	A
1072	SUD	Sugarcoat Maple	81	1	A
1073	SUD	Pyrus Pear	83	1	B
1074	SUD	Maple Glen	76	2	B
1075	SUD	Alder Ale	76	2	A
1076	SUD	Coastal Walnut	84	1	B
1076	WWS	Coastal Walnut	45	1	A
1077	SUD	Choco Walnut	82	1	B
1077	PAR	Choco Walnut	41	1	B
1079	SUD	Natural Wine	77	3	B
1084	SUD	Wenge Enigma	81	2	A
1085	SUD	Wenge Crown	90	1	A
1085	PAR	Wenge Crown	40	1	A
1086	SUD	Honey Maple	90	1	B
1088	SUD	Novel Beech	77	3	A
1088	PGL	Novel Beech	27	2	B
1089	SUD	Beech Marvel	93	1	A
1089	UBL	Beech Marvel	62	1	A
1090	SUD	Flush Grove	93	3	A
1090	BST	Flush Grove	54	1	A

D.No.	Finish	D.Name	Page	Row	Col
1095	SUD	Vintage Grove	85	1	B
1095	SUD	Livid Lumber	67	1	B
1100	MGO	Chesters	104	1	B
1101	SUD	White	104	1	A
1101	MGO	White	104	1	A
1101	MAT	White	107	1	B
1101	PGL	White	51	1	A
1101	MRO	White	76	2	A
1105	SUD	Arctic White	107	1	E
1105	UBL	Arctic White	62	1	B
1105	BST	Arctic White	53	1	B
1113	SUD	Frosty White	107	1	C
1113	MAT	Frosty White	107	1	D
1113	PAR	Frosty White	42	2	B
1113	PGL	Frosty White	37	1	B
1113	CUR	Frosty White	68	2	B
1113	EBK	Frosty White	11	1	A
1117	SUD	Sea Shell White	108	1	B
1121	SUD	Mony	108	2	A
1140	SUD	Beige	108	1	C
1141	SUD	Wood	108	1	D
1141	SUD	Chocolate	108	1	C
1208	SUD	Mango	108	2	C
1208	PGL	Mango	38	2	A
1209	SUD	Coffee	108	4	D
1213	SUD	Orange	108	3	E
1213	PGL	Orange	38	1	A
1216	SUD	Dark Grey	108	4	E
1216	PGL	Dark Grey	37	2	A
1216	SUD	Grey	108	2	A
1216	SUD	Bluish Grey	108	2	B
1216	SUD	Dust	108	2	D
1216	SUD	Light Blue	108	3	A
1216	SUD	Sky Blue	108	3	B
1216	SUD	Electric Blue	108	3	D
1216	PGL	Electric Blue	38	2	B
1216	CUR	Electric Blue	68	2	A
1216	SUD	Dark Blue	108	3	E
1216	MRO	Dark Blue	70	2	B
1300	SUD	Mist	108	2	E
1300	MRO	Mist	66	1	B
1306	SUD	G T Purple	108	5	B
1306	SUD	G T Lilac	108	5	A
1306	SUD	Mint Green	108	2	B
1311	SUD	Royal Red	108	4	B
1311	PGL	Royal Red	38	1	B
1311	MRO	Royal Red	70	1	A
1311	SUD	Cloud Grey	108	2	C
1311	PGL	Cloud Grey	37	2	B
1312	SUD	Zen	108	3	B
1312	SUD	Brick Red	108	4	C
1312	PGL	Brick Red	38	1	A
1312	SUD	Dawn	108	2	D
1312	SUD	Fruit Green	108	2	C
1312	SUD	Army Green	108	2	E
1312	COO	Army Green	104	2	A
1312	PGL	Army Green	38	3	A
1312	SUD	Turkey Delight	108	4	A
1312	SUD	Mellow	108	3	A
1312	SUD	Chocolate	108	5	C
1312	SUD	Tender Green	108	2	D
1401	MRO	Black	16	1	B
1401	SUD	Black	108	5	D
1401	COO	Black	104	2	B
1401	PAR	Black	41	2	A
1401	PGL	Black	38	3	B
1401	UBL	Black	61	1	A
1401	LEF	Black	67	1	A
1401	CUR	Black	68	1	B
1401	EBK	Black	11	2	B
1430	SUD	Washington Cherry	81	2	A
1432	SUD	Cappin Anago	82	2	B
1434	SUD	Willow Oak	86	2	B
1435	SUD	Cook Oak	84	3	B
1437	SUD	Scarlet Oak	90	2	A
1438	SUD	Spanish Oak	88	2	A
1448	SUD	Divine Oak	82	2	B
1448	PGL	Divine Oak	31	1	A
1449	SUD	Oak Rippe	94	1	B
1452	SUD	Light Oak	77	1	A
1452	SUD	Aubergine	108	5	C
1461	SUD	Sugar Teak	91	1	B
1462	SUD	Jamaican Teak	94	2	B
1462	PAR	Jamaican Teak	41	1	B
1463	SUD	Laqueered Teak	91	2	B
1464	SUD	Blazing Teak	94	2	A
1476	SUD	Smoked Oak	92	1	A
1476	BST	Smoked Oak	53	1	A
1504	SUD	Frosty Teak	85	1	B
1506	SUD	Corn Teak	96	2	B
1507	SUD	Butternut Warm	95	1	B
1508	SUD	Butternut Brown	95	1	A
1509	SUD	Butternut Pecan	95	1	A
1510	SUD	Butternut Chocolate	95	2	A
1541	BST	Astral Light	52	2	A

D.No.	Finish	D.Name	Page	Row	Col
1541	SUD	Astral Light	99	1	A
1542	BST	Astral Dark	62	1	A
1542	SUD	Astral Dark	99	1	B
1543	SUD	Light Braid	100	2	B
1543	VEC	Light Braid	51	1	B
1543	SUD	Beige Braid	100	2	A
1545	SUD	Pale Herringbone	101	1	B
1545	SUD	Dark Herringbone	101	2	A
1547	SUD	Grey Herringbone	101	2	B
1549	SUD	Buff Jinn	101	1	A
1549	PGL	Buff Jinn	54	1	B
1549	VEC	Buff Jinn	51	2	B
1571	SUD	Coconut White	100	1	B
1572	SUD	Coconut Grey	100	1	A
1572	SUD	Raw Van Beige	100	1	A
1572	LEF	Raw Van Beige	57	2	B
1576	SUD	Raw Van Grey	100	1	B
1576	LEF	Raw Van Grey	57	2	A
1579	SUD	Cocoa Beige	100	2	B
1581	SUD	Cocoa Brown	100	2	A
1581	MRO	Earle Sand	16	1	A
1581	PGL	Earle Sand	54	2	A
1581	MRO	Earle Rock	16	2	A
1581	MAT	Earle Rock	69	2	B
1581	PGL	Earle Rock	54	2	B
1581	PGL	Grey Cloud	33	1	A
1582	MAT	Grey Cloud	69	1	A
1583	MRO	Grey Cloud	14	1	A
1584	MRO	Tanara Varni	15	1	B
1584	PGL	Tanara Varni	32	1	A
1584	MAT	Tanara Varni	65	1	A
1585	PGL	Ace & Marble	57	1	A
1585	MAT	Ace & Marble	65	2	A
1585	MRO	Ace & Marble	15	1	A
1586	PGL	Grey Venets	33	1	B
1586	MAT	Grey Venets	69	1	B
1586	MRO	Grey Venets	15	2	B
1587	MAT	Korea Flute	64	1	A
1701	SUD	Rising Beech	62	2	B
1702	SUD	Cherry	77	1	B
1711	SUD	Swire Teak	90	2	B
1711	PGL	Swire Teak	25	1	A
1901	SUD	Saple Brunet	97	1	A
1901	CUR	Saple Brunet	69	1	A
1902	PGL	Modern Ash L.Jhr	27	2	A
1902	SUD	Modern Ash L.Jhr	68	1	A
1902	PGL	Modern Ash Dark	27	1	A
1903	SUD	Modern Ash Dark	74	1	A
1904	PGL	Tuscane	23	1	A
1904	SUD	Tuscane	77	2	A
1905	VEC	Versalet Wood	48	1	A
1905	PAR	Versalet Wood	42	1	A
1905	EBK	Versalet Wood	11	1	B
1905	SUD	Versalet Wood	85	1	A
1906	PGL	Dates Walnut	23	1	B
1906	SUD	Dates Walnut	75	1	A
1907	PGL	Trig Wood	24	1	A
1907	SUD	Trig Wood	75	1	B
1915	SUD	G T Hayane Teak	92	2	A
1917	SUD	Allure Nature	87	1	B
1917	PGL	Allure Nature	28	2	B
1917	SUD	Allure Oak	67	1	A
1917	PGL	Allure Oak	28	2	A
1917	SUD	Mystic Walnut Light	97	1	A
1917	PGL	Mystic Walnut Light	25	2	A
1917	SUD	Mystic Walnut Dark	67	1	B
1917	PGL	Mystic Walnut Dark	25	1	A
1917	LEF	Mystic Walnut Dark	68	2	A
1917	MRO	Mystic Walnut Dark	69	1	A
1917	SUD	Amazon Honey Wood	76	2	A
1917	PGL	Amazon Honey Wood	25	1	A
1917	SUD	Amazon Burnt Wood	67	1	A
1					