

Product Catalogue and Price List



2024-25

 **AIDO** XL-C
Ammalaka Group



About us

DORMA XL-C is now AIDO XL-C.

AIDO XL-C, endorsed by our parent brand dormakaba, offers a range of products that seamlessly integrate to create the perfect aesthetics for your space. Our door hardware, glass fittings, automatics, spiders, digital door lock and railings come in an array of styles and materials, including intricate designs.

We understand the importance of safety, security, and style in the built environment, and we are committed to providing our customers with the best products to meet their needs. Our objective is to offer our customers products that function well and enhance any space's style and elegance.

We not only provide standard products, but we also offer a wide array of choices to fulfill the individual needs of any project. Our specialists are committed to finding the most suitable product for you.

Index

Door Hardware

Door Closer	07
Floor Spring	10
Glass Door Package (GDP)	12
Lever Handle - Classic	14
Mortise Lock	16
Euro Profile Cylinder - Serrated Keys	18
Master Key Cylinder	21
Night Latch Lock	23
Cylindrical Knob Lock	24
Pull Handle	25
Hygienic Touch Solution	28
Hinge	29
Seals	30
Door Accessories	31

Glass Fittings

Patch Fitting	35
OSCILIO Series Glass Door Fittings	38
Shower Swing Fittings	40
EZYSLIDE Sliding Shower System	47
Manual Sliding Door Systems	54
Justo Slide System	59
Folding Sliding System	68
Horizontal Sliding System	69
Fixed Frame Fittings	70
Glass Door Accessories	72

Automatics

Automatic Sliding - Plus Package	76
Framed Sliding Door	79
Accessories	80
Spare Parts	81

Spiders & Balustrades

Non-Fin Type Spider Fittings	85
Fin Type Spider Fittings	86
Splice plate & Facade bolts	87
Facade Bracket & Fin Glass Suspension Brackets	88
K30 Non-Fin Type Spider fitting series	89
K30 Fin Type Spider fitting series	90
Canopy Fittings	91
Balustrade	92
Frameless Glass Railing Systems	96

Digital Door Lock

Digital Door Lock	100
-------------------	-----

Others

Logistic Center	102
Testing Facilities	103
Your Trusted Partner	104
Customer Service	105
Our Presence	106



Door Hardware

We offer a full range of solutions for all your door needs from AIDO XL- C for residential or commercial projects. Products that flexibly adapt, are designed holistically and made from the highest quality. Designed for excellence.



Door Closer

Aesthetics, consistency and convenience- the AIDO XL-C Surface Mounted Scissor Arm, Surface Mounted Sliding Channel and Concealed Door Closers are all intelligently designed keeping these criteria in mind. Hold Open Unit options are also available.

Surface Mounted Door Closer - Scissor Arm

The intelligent AIDO XL-C Surface Mounted Scissor Arm Door Closer combines top quality, consistency, and convenience. There are also options offered for providing hold open unit.

Door Hardware

Model Number	Description	Ordering Code	Finish	Maximum Width Of Door	Maximum Weight Of Door	MRP (INR)
XL-C 1000	Door Closer With Scissor Arm Size 2	9127366	Silver	900 mm	45 kgs	1,830.00
XL-C 1001	Door Closer With Scissor Arm Size 3	9127346	Silver	950 mm	60 kgs	2,565.00
XL-C 1002S	Door Closer With Scissor Arm Size 2/3/4	9127396	Silver	1100 mm	80 kgs	3,540.00
XL-C 1112	Door Closer With Ho Arm Size 2/3/4	9127397	Silver	1100 mm	80 kgs	4,990.00
XL-C 1003	Door Closer With Scissor Arm Size 2/3/4	9127308	Silver	1100 mm	80 kgs	8,050.00
XL-C 1004	Door Closer With Scissor Arm Size 3-6	9127309	Silver	1400 mm	120 kgs	10,275.00
XL-C 1114*	Door Closer With Scissor Arm Size 3-6	9127420	Black	1400 mm	120 kgs	11,300.00

**Applicable for select Door Closers



XL-C 1000



XL-C 1001



XL-C 1002S



XL-C 1112



XL-C 1003



XL-C 1004



XL-C 1114

Surface Mounted Door Closer - Slide Channel



AIDO XL-C Surface Mounted Sliding Channel Door Closers intelligently blend high quality, premium design, consistency, and aesthetic appeal. Almost any specific door circumstance or application may be addressed by this comprehensive product line, which covers a wide range of functional requirements.

Model Number	Description	Ordering Code	Finish	Maximum Width Of Door	Maximum Weight Of Door	MRP (INR)
XL-C 1101	Door Closer With Slide Channel Size 2 With Hold Open	9142032	Silver	900 mm	45 kgs	3,045.00
XL-C 1103	Door Closer With Slide Channel Size 3 With Hold Open	9127332	Silver	1000 mm	80 kgs	9,355.00
XL-C 1113*	Door Closer With Slide Channel Size 3 With Hold Open	9127416	Black	1000 mm	80 kgs	10,270.00
XL-C 1104	Door Closer With Slide Channel Size 4 With Hold Open	9127395	Silver	1100 mm	100 kgs	11,445.00
XL-C 1115*	Door Closer With Slide Channel Size 4 With Hold Open	9127421	Black	1100 mm	100 kgs	12,590.00

**Applicable for select Door Closers



XL-C 1101



XL-C 1103



XL-C 1113



XL-C 1104



XL-C 1115

Concealed Mounted Door Closer - Slide Channel



Aesthetics, consistency and convenience- the AIDO XL-C Concealed Door Closer are designed keeping all these in mind. The single & double action product portfolio satisfies a broad spectrum of functional requirements and thus offers solutions for almost any individual door situation or application. Options of hold open unit are available as well.

Door Hardware

Model Number	Description	Ordering Code	Finish	Maximum Width Of Door	Maximum Weight of door	MRP (INR)
XL-C 1005	Concealed Door Closer With Slide Channel Size 2	9127310	Silver	850 mm	40 kgs	7,395.00
XL-C 1006	Concealed Door Closer With Slide Channel Size 4	9127311	Silver	1100 mm	80 kgs	12,725.00
XL-C 1006H	Concealed Door Closer With Slide Channel Size 4, Hold Open	9127411	Silver	1100 mm	80 kgs	13,535.00
XL-C 1106	Concealed Door Closer With Slide Channel Size 4 Hold Open	9127405	Silver	1100 mm	100 kgs	13,440.00
XL-C 1126	Concealed Door Closer With Slide Channel Double Action Size 4 Hold Open	9127406	Silver	1100 mm	100 kgs	13,685.00

XL-C 1005, XL-C 1106, XL-C 1126 - Min door thickness: 40mm
 XL-C 1006, XL-C 1006H - Min door thickness: 45mm



XL-C 1005



XL-C 1006 & XL-C 1006H



XL-C 1106



XL-C 1126



Floor Spring



AIDO XL-C Floor Spring are a range of intelligently crafted products that combine aesthetics, consistency and convenience. Designed with premium quality materials, this wide-ranging product portfolio for glass door, wooden door & Aluminium application satisfies a broad spectrum of functional requirements and thus offers solutions for almost any individual door situation or application.

Model Number	Description	Ordering Code	Finish	Maximum Width Of Door	Maximum Weight Of Door	MRP (INR)
XL-C 1007	Floor Spring Size 4 With 90° Hold Open	9127348	SSS	1100 mm	100 kgs	10,980.00
XL-C 6110	Floor Spring Size 3 With 90° Hold open	9133848	SSS	1000 mm	80 kgs	8,505.00
XL-C 6111	Floor Spring Size 3 90° Hold Open With Accessories	9133849	SSS	1000 mm	80 kgs	9,305.00
XL-C 5110	Floor Spring Size 3 With 90° Hold Open	9133846	SSS	950 mm	60 kgs	5,590.00
XL-C 5111	Floor Spring Size 3 90° Hold Open With Accessories	9133847	SSS	950 mm	60 kgs	6,085.00

All above products have adjustable sweep speed & closing speed



XL-C 1007



XL-C 6110



XL-C 6111



XL-C 5110



XL-C 5111

Floor Spring



Finish	Description	Floor Spring Weight 100 kgs Without Accessories	Floor Spring Weight 80 Kgs With Accessories*	Floor Spring Weight 80 Kgs	Floor Spring Weight 60 Kgs With Accessories*	Floor Spring Weight 60 Kgs
Black Matt PVD	Model Number	XL-C 1017	XL-C 6211	XL-C 6210	XL-C 5217	XL-C 5216
	Ordering Code	9110803	9133857	9133856	9133851	9133850
	MRP (INR)	12,295.00	11,635.00	10,635.00	7,605.00	6,985.00
Gold PVD	Model Number	XL-C 1018	XL-C 6311	XL-C 6310	XL-C 5311	XL-C 5310
	Ordering Code	9110804	9133859	9133858	9133853	9133852
	MRP (INR)	14,975.00	12,655.00	11,570.00	8,275.00	7,600.00
Rose Gold PVD	Model Number	XL-C 1019	XL-C 6511	XL-C 6510	XL-C 5511	XL-C 5510
	Ordering Code	9110805	9133861	9133860	9133855	9133854
	MRP (INR)	14,975.00	12,655.00	11,570.00	8,275.00	7,600.00

*Accessories for wood/aluminium doors





Glass Door Package (GDP)

Architectural ideas are given a translucent elegance through glass walls and doors. AIDO-XL-C offers a complete set of door accessories with patch and floor springs designed for double action (both side swing doors). Elegant patch fittings highlight the seamless fusion of functionality and aesthetics. Almost any toughened glass construction can be realized elegantly thanks to a wide variety of hardware options.

Customizations are easy as well as our fittings suit a range of door widths from 900 - 1100 mm and door weights from 60-100Kg as well. Single box pack for one Glass Door promises a hassle-free experience of selection, purchase and installation. Choose between lockable or lock free door sets according to your specific requirement. The accessories are also adaptable for 10 & 12mm toughened glass with easy standard glass cut-outs.

Finish	Description	GDP W/o Lock (60kg)*	GDP With Lock (60kg)*	GDP W/O Lock (80kg)*
Polished Chrome	Model Number	XL-C 4080	XL-C 4081	XL-C 4090
	Ordering Code	9133818	9133819	9133820
	MRP (INR)	9,950.00	12,875.00	12,650.00
Matt Black PVD	Model Number	XL-C 4280	XL-C 4281	XL-C 4290
	Ordering Code	9133822	9133823	9133824
	MRP (INR)	12,125.00	15,695.00	15,415.00
Gold PVD	Model Number	XL-C 4380	XL-C 4381	XL-C 4390
	Ordering Code	9133826	9133827	9133828
	MRP (INR)	13,195.00	17,075.00	16,775.00
SS Matt	Model Number	XL-C 4480	XL-C 4481	XL-C 4490
	Ordering Code	9133834	9133835	9133836
	MRP (INR)	9,700.00	12,555.00	12,335.00
Rose Gold PVD	Model Number	XL-C 4580	XL-C 4581	XL-C 4590
	Ordering Code	9133830	9133831	9133832
	MRP (INR)	13,195.00	17,075.00	16,775.00

All Patch Fitting have SS 316 grade covers



XL-C 4080



XL-C 4081



XL-C 4090

Polished Chrome
 Matt Black PVD
 Gold PVD
 SS Matt
 Rose Gold PVD

Glass Door Package (GDP)



Finish	Description	GDP With Lock (80kg)*	GDP W/O Lock (100kg)	GDP With Lock (100kg)
Polished Chrome	Model Number	XL-C 4091	XL-C 4000	XL-C 4001
	Ordering Code	9133821	9137527	9142029
	MRP (INR)	15,095.00	15,945.00	19,305.00
Matt Black PVD	Model Number	XL-C 4291	XL-C 4200	XL-C 4201
	Ordering Code	9133825	9136274	9136275
	MRP (INR)	18,395.00	17,430.00	21,105.00
Gold PVD	Model Number	XL-C 4391	XL-C 4300	XL-C 4301
	Ordering Code	9133829	9136280	9136281
	MRP (INR)	20,015.00	21,165.00	25,625.00
SS Matt	Model Number	XL-C 4491	XL-C 4400	XL-C 4401
	Ordering Code	9133837	9136215	9136216
	MRP (INR)	14,720.00	15,560.00	18,835.00
Rose Gold PVD	Model Number	XL-C 4591	XL-C 4500	XL-C 4501
	Ordering Code	9133833	9136286	9136287
	MRP (INR)	20,015.00	21,165.00	25,625.00

All Patch Fitting have SS 316 grade covers



XL-C 4091



XL-C 4000



XL-C 4001



Lever Handle - Classic



Meticulously crafted with attention to every detail, the AIDO XL-C Lever handles are the epitome of outstanding quality. High durability created and crafted for steadfast use in the several applications. Customized models are also available on request. The handles are suitable for doors up to 55mm in thickness and come in stainless steel satin as well.

Model Number	Description	Ordering Code	Finish	Material	Type Of Door	MRP (INR)
XL-C 2000 - D4+	Lever Handle With Oval Roses And Escutcheons	9111398	SSS	SS 304	Narrow stile	1,615.00
XL-C 2001 - D1+	Lever Handle With Round Roses And Escutcheons	9127314	SSS	SS 304	Wide stile	1,615.00
XL-C 2002 - D2+	Lever Handle With Round Roses And Escutcheons	9127315	SSS	SS 304	Wide stile	1,615.00
XL-C 2003 - D3+	Lever Handle With Round Roses And Escutcheons	9127316	SSS	SS 304	Wide stile	1,615.00
XL-C 2101+	Lever Handle With Square Roses And Escutcheons	9121246	SSS	SS 304	Wide stile	2,205.00
XL-C 2102*	Lever Handle With Round Roses And Escutcheons	9121247	SSS	SS 304	Wide stile	3,550.00
XL-C 2103*	Lever Handle With Square Roses And Escutcheons	9121248	SSS	SS 304	Wide stile	3,550.00
XL-C 2026*	Lever Handle With Round Roses And Escutcheons	9121081	SSS	Zinc Alloy	Wide stile	2,455.00
XL-C 2029*	Lever Handle With Round Roses And Escutcheons	9121084	SSS	Zinc Alloy	Wide stile	2,455.00

+Hollow Lever Handles

*Solid Lever Handles



XL-C 2000 - D4



XL-C 2001 - D1



XL-C 2002 - D2



XL-C 2003 - D3



XL-C 2101



XL-C 2102



XL-C 2103



XL-C 2026



XL-C 2029

Lever Handle - Designer



Finish	Description	Lever Handle With Roses And Escutcheons		
SS MATT	Model Number	XL-C 2301	XL-C 2304	XL-C 2307
	Ordering Code	9119045	9119048	9119051
	MRP (INR)	2,720.00	3,675.00	2,975.00
Antique Brass	Model Number	XL-C 2302	XL-C 2305	XL-C 2308
	Ordering Code	9119046	9119049	9119052
	MRP (INR)	2,915.00	3,875.00	3,175.00
Glossy Black PVD	Model Number	XL-C 2303	XL-C 2306	XL-C 2309
	Ordering Code	9119047	9119050	9119053
	MRP (INR)	3,515.00	4,475.00	3,775.00
Matt Black PVD	Model Number	XL-C 2310	XL-C 2311	XL-C 2312
	Ordering Code	9118991	9118992	9118993
	MRP (INR)	3,515.00	4,475.00	3,775.00

Material: Zinc alloy, Type of Door: Widestile



XL-C 2301



XL-C 2302



XL-C 2303



XL-C 2304



XL-C 2305



XL-C 2306



XL-C 2307



XL-C 2308



XL-C 2309

SS Matt
 Antique Brass
 Glossy Black PVD
 Matt Black PVD

Mortise Lock



With the use of premium materials, AIDO XL-C provides Mortise Locks for wood, metal, and Aluminium doors that are of the highest standard of quality and functional dependability. The AIDO XL-C locks' non-handed lock version allows the latch handing to be reversed. AIDO XL-C Locks have a strong, maintenance-free lock mechanism and a long service life.

Model Number	Description	Ordering Code	Forend Material	Finish	Forend Width	Backset (D)	CTC	MRP (INR)
XL-C 3025	Sash Lock	9121117	SS 304	SSS	20 mm	55 mm	72 mm	1,450.00
XL-C 3028	Sash Lock	9121120	SS 304	SSS	20 mm	57 mm	61 mm	1,170.00
XL-C 2013	Sash Lock	9127367	SS 304	SSS	20 mm	25 mm	72 mm	1,795.00
XL-C 2015	Sash Lock	9112764	SS 304	SSS	20 mm	35 mm	72 mm	2,095.00
XL-C 2014	Sliding Door	9127325	SS 304	SSS	15 mm	30 mm	-	1,640.00
XL-C 2016	Dead Lock	9127356	SS 304	SSS	20 mm	55 mm	-	1,190.00
XL-C 2017	Dead Lock	9127342	SS 304	SSS	20 mm	25 mm	-	1,350.00
XL-C 2019	Dead Lock	9112759	SS 304	SSS	20 mm	35 mm	-	2,255.00
XL-C 2062*	Latch Lock	9117890	SS 304	SSS	22 mm	50 mm	-	915.00

XL-C 3025, XL-C 3028, XL-C 2016 - Suitable for Wide Stile doors
 XL-C 2013, XL-C 2015, XL-C 2017, XL-C 2019 - Suitable for Narrow Stile doors
 XL-C 2014 - Suitable for Sliding door



XL-C 3025



XL-C 3028



XL-C 2013



XL-C 2015



XL-C 2014



XL-C 2016



XL-C 2017



XL-C 2019



XL-C 2062

Mortise Lock - New Range



Door Hardware

Model Number	Description	Ordering Code	Finish	Forend Width	Backset (D)	CTC	MRP (INR)
XL-C 3085	Sash Lock With Latch And Dead Bolt Strike Plate	9119054	SS MATT	22 mm	50 mm	85 mm	1,025.00
XL-C 3086	Sash Lock With Latch And Dead Bolt Strike Plate	9119055	Antique Brass	22 mm	50 mm	85 mm	1,125.00
XL-C 3087	Sash Lock With Latch And Dead Bolt Strike Plate	9119056	Glossy Black PVD	22 mm	50 mm	85 mm	1,420.00
XL-C 3088	Sash Lock With Latch And Dead Bolt Strike Plate	9119084	Matt Black PVD	22 mm	50 mm	85 mm	1,420.00



XL-C 3085



XL-C 3086



XL-C 3087

- SS Matt
- Antique Brass
- Glossy Black PVD
- Matt Black PVD



Euro Profile Cylinder - Serrated Keys



AIDO XL-C Euro Profile Cylinders are the key to a proven locking system security on both external and internal doors. Certified high-quality manufacturing offers precise, dependable functioning and longevity. The AIDO XL-C offers a wide range of cylinders with the appropriate amount of protection, including double, thumb turn, single, and emergency release cylinders. Cylinders supplied with 3 keys.

Model Number	Description	Ordering Code	Finish	Length	MRP (INR)
XL-C 2010A	Euro Profile Cylinder, Both Side Key	9127319	SNP	60 mm	760.00
XL-C 2011A	Euro Profile Cylinder, Thumb Turn And Key Operation	9127320	SNP	60 mm	785.00
XL-C 2012A	Euro Profile Cylinder, Thumb Turn And Emergency Release Slot	9127321	SNP	60 mm	760.00
XL-C 2070A	Euro Profile Cylinder, Both Side Key	9113976	SNP	70 mm	1,010.00
XL-C 2071A	Euro Profile Cylinder, Thumb Turn And Key	9113977	SNP	70 mm	1,035.00
XL-C 2072A	Euro Profile Cylinder, Thumb Turn And Emergency Release Slot	9113978	SNP	70 mm	1,010.00
XL-C 2080A	Euro Profile Cylinder, Both Side Key	9113910	SNP	80 mm	1,100.00
XL-C 2081A	Euro Profile Cylinder, Thumb Turn And Key	9113911	SNP	80 mm	1,240.00
XL-C 3513	Euro Profile Half Cylinder With Key	9115984	SNP	42 mm	955.00
XL-C 3514	Euro Profile Half Cylinder With Thumb Turn	9113902	SNP	42 mm	1,370.00

*SNP - Satin Nickel Plated



XL-C 2010A



XL-C 2011A



XL-C 2012A



XL-C 2070A



XL-C 2071A



XL-C 2072A



XL-C 2080A



XL-C 2081A



XL-C 3513



XL-C 3514

Euro Profile Cylinder - Computerised Keys



Door Hardware

Finish	Description	Euro Profile Cylinder Both Side Key	Euro Profile Cylinder Thumbturn And Key	Euro Profile Cylinder Thumbturn & Coin Operation
SS MATT	Model Number	XL-C 2601	XL-C 2604	XL-C 2607
	Ordering Code	9119063	9119057	9119069
	MRP (INR)	855.00	935.00	780.00
Antique Brass	Model Number	XL-C 2602	XL-C 2605	XL-C 2608
	Ordering Code	9119064	9119058	9119070
	MRP (INR)	985.00	1,075.00	895.00
Glossy Black PVD	Model Number	XL-C 2603	XL-C 2606	XL-C 2609
	Ordering Code	9119065	9119059	9119071
	MRP (INR)	1,125.00	1,205.00	1,050.00
Matt Black PVD	Model Number	XL-C 2619	XL-C 2620	XL-C 2621
	Ordering Code	9119078	9119079	9119080
	MRP (INR)	1,125.00	1,205.00	1,050.00

Material: Brass, Length: 60 mm



XL-C 2601



XL-C 2602



XL-C 2603



XL-C 2604



XL-C 2605



XL-C 2606



XL-C 2607



XL-C 2608



XL-C 2609

SS Matt
 Antique Brass
 Glossy Black PVD
 Matt Black PVD

Euro Profile Cylinder - Computerised Keys



Finish	Description	Euro Profile Cylinder Both Side Key, 3 Keys	Euro Profile Cylinder Thumbturn And Key, 3 Keys	Euro Profile Cylinder Thumbturn And Coin Operation
SS MATT	Model Number	XL-C 2610	XL-C 2613	XL-C 2616
	Ordering Code	9119066	9119060	9119072
	MRP (INR)	915.00	995.00	840.00
Antique Brass	Model Number	XL-C 2611	XL-C 2614	XL-C 2617
	Ordering Code	9119067	9119061	9119073
	MRP (INR)	1,050.00	1,140.00	960.00
Glossy Black PVD	Model Number	XL-C 2612	XL-C 2615	XL-C 2618
	Ordering Code	9119068	9119062	9119074
	MRP (INR)	1,190.00	1,265.00	1,110.00
Matt Black PVD	Model Number	XL-C 2622	XL-C 2623	XL-C 2624
	Ordering Code	9119081	9119082	9119083
	MRP (INR)	1,190.00	1,265.00	1,110.00

Material: Brass, Length: 70 mm



XL-C 2610



XL-C 2611



XL-C 2612



XL-C 2613



XL-C 2614



XL-C 2615



XL-C 2616



XL-C 2617



XL-C 2618

SS Matt
 Antique Brass
 Glossy Black PVD
 Matt Black PVD

Master Key Cylinder

Master Key System in cylinders offers control, convenience and security. It is the convenience need in all buildings like homes, offices, education, healthcare centers. One key for all your locks.

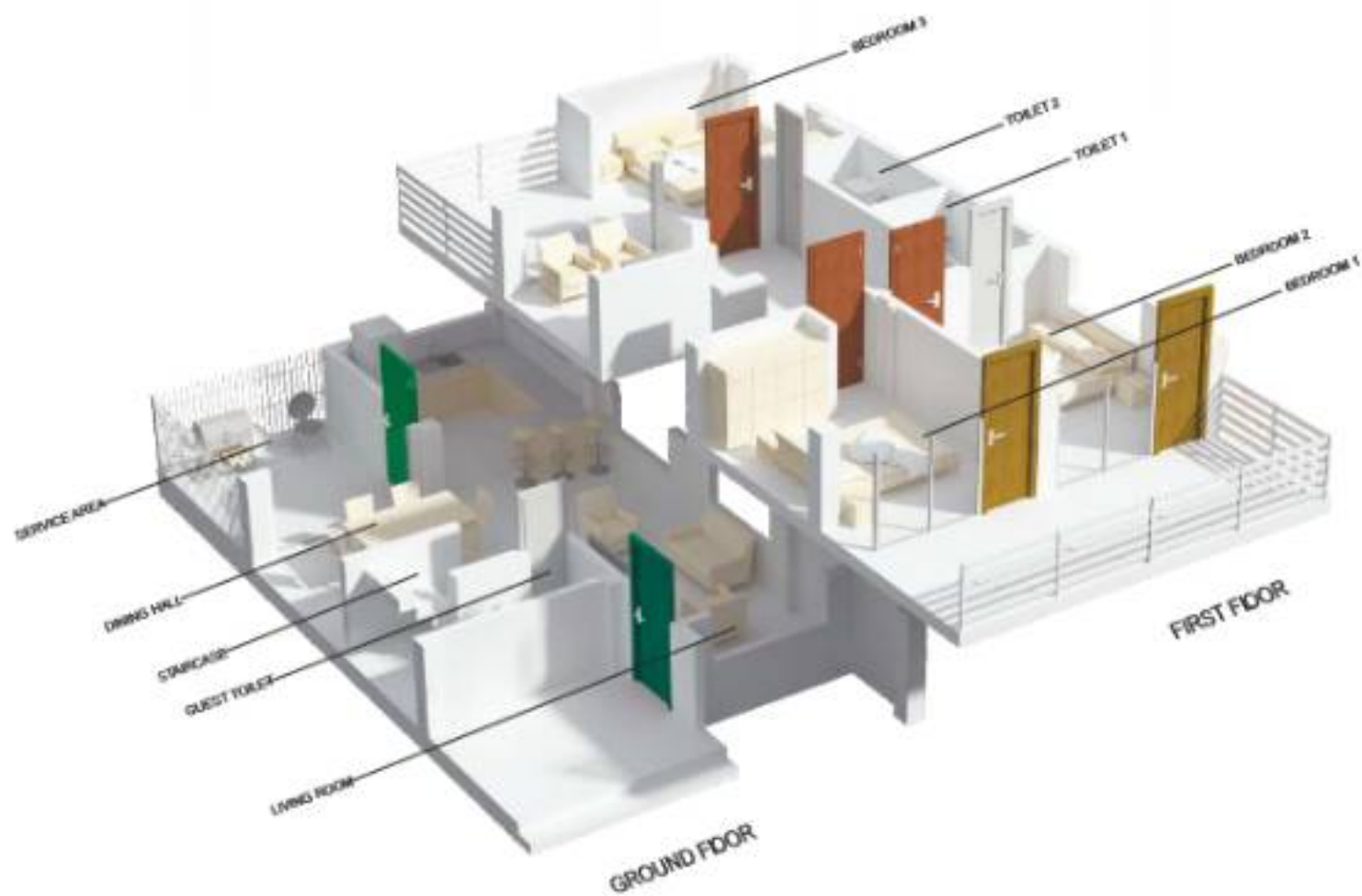
Model Number	Description	Ordering Code	Finish	Length	MRP (INR)
XL-C 2260	Euro Profile Cylinder, Both Side Key	9111289	SNP	60 mm	1,550.00
XL-C 2270	Euro Profile Cylinder, Both Side Key	9111292	SNP	70 mm	1,675.00
XL-C 2280	Euro Profile Cylinder, Both Side Key	9111296	SNP	80 mm	1,925.00
XL-C 2261	Euro Profile Cylinder, Thumb Turn And Key Operation	9111290	SNP	60 mm	1,665.00
XL-C 2271	Euro Profile Cylinder, Thumb Turn And Key Operation	9111293	SNP	70 mm	1,785.00
XL-C 2281	Euro Profile Cylinder,thumb Turn And Key Operation	9111297	SNP	80 mm	2,035.00
XL-C 2245	Euro Profile Half Cylinder With Key	9111291	SNP	42 mm	1,020.00

Door Hardware



Master Key Cylinder

Model Number	Description	Ordering Code	Finish	Length	MSP (INR)
XL-C.2200	Additional Master Key	9111294	SNP	-	110.00
XL-C.2201	Additional Grand Master Key	9111295	SNP	-	110.00
XL-C.2210	Master Key Package (10 Nos. BSK +10 Nos. TTK)	9111495	SNP	60 mm	32,130.00
XL-C.2211	Master Key Package (10 Nos. BSK +10 Nos. TTK)	9111496	SNP	70 mm	34,525.00



Night Latch Locks



High quality durable Rim Lock with dual bolt for residential segment provides a convenient and increased secure locking solution for your home. High security reversible key technology ensures ease of access with security.

Model Number	Description	Ordering Code	Finish	MRP (INR)
XL-C 1201	Night Latch Lock	9116781	SS	2,475.00
XL-C 1203	Night Latch Lock	9116782	Antique	2,570.00
XL-C 1207	Rim Lock - Tri Version	9116802	SS	3,740.00
XL-C 1208	Rim Lock - Tri Version	9116803	Antique	3,905.00
XL-C 1209	Rim Lock - Vertical Lock	9116804	SS	2,950.00
XL-C 1210	Rim Lock - Vertical Lock	9116805	Antique Brass	3,070.00
XL-C 1211	Rim Lock - tri D Bolt	9116814	SS	3,250.00
XL-C 1212	Rim Lock - Tri D Bolt	9116815	Antique Brass	3,625.00

Door Hardware



XL-C 1201



XL-C 1203



XL-C 1207



XL-C 1208



XL-C 1209



XL-C 1210



XL-C 1211



XL-C 1212

Cylindrical Knob Lock

The renowned locking system security of AIDO XL-C Cylinder Knob Locks is available for both indoor and outdoor doors. Materials of the highest caliber offer precise, dependable functioning and durability intended for unwavering usage in the wide range of applications. You can always rely on AIDO XL-C to offer a wide range of Cylindrical Knobs in the entrance, privacy, and passage categories.

Model Number	Description	Ordering Code	Finish	Material	MRP (INR)
XL-C 2020	Entrance Function	9127352	SSS	SS304	1,115.00
XL-C 2021	Privacy Function	9127353	SSS	SS304	1,060.00
XL-C 2022	Passage Function	9127323	SSS	SS304	1,025.00

XL-C 2020 - Entrance Function : Internal Push Button and external key operation. No. of keys - 3 Non Master Keyed

XL-C 2021 - Privacy Function : Internal Push Button and external emergency release slot.

XL-C 2022 - Passage Function : Active knobs on both sides.



XL-C 2020



XL-C 2021



XL-C 2022



Pull Handle

AIDO XL-C Pull Handles are the definition of excellent quality, designed for excellence down to the very last detail and exuding fine craftsmanship. Developed for uncompromising use in the applications like wood, metal and glass doors. They provide true quality regardless of shape, size, or customized manufacture, characterized by precisely defined, identical properties.

Model Number	Description	Ordering Code	Finish	CTC	Diameter	Length	MRP (INR)
XL-C 3001A	Pull Handle D - Type	9127324	SSS	150 mm	19 mm	169 mm	1,465.00
XL-C 3002A	Pull Handle D - Type	9127354	SSS	300 mm	22 mm	322 mm	2,305.00
XL-C 3038A	Pull Handle D - Type	9125576	SSS	450 mm	25 mm	475 mm	3,395.00
XL-C 3043A	Pull Handle D - Type	9125575	SSS	350 mm	25 mm	375 mm	2,650.00
XL-C 3039A	Pull Handle H - Type	9125577	SSS	700 mm	32 mm	800 mm	6,850.00
XL-C 3042A	Pull Handle H - Type	9126078	SSS	1050 mm	38 mm	1200 mm	12,960.00
XL-C 3000A	Pull Handle H - Type	9125521	SSS	300 mm	22 mm	400 mm	2,715.00
XL-C 3003A	Pull Handle H - Type	9127327	SSS	350 mm	25 mm	450 mm	4,170.00
XL-C 3004A	Pull Handle H - Type	9127328	SSS	500 mm	32 mm	600 mm	6,315.00
XL-C LH 3024A	Pull Handle Lockable	9127331	SSS	1125 mm	35 mm	1500 mm	16,645.00

Grade : SS 304

Note : Suitable upto door thickness of 55 mm

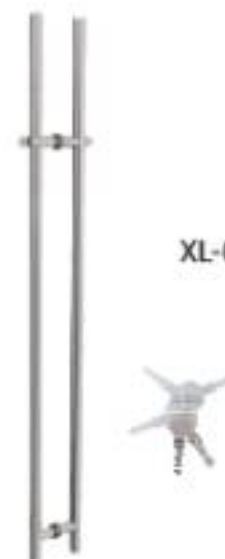
Lockable Pull Handle XL-C 3024 is suitable for Glass door



XL-C 3001A
XL-C 3002A
XL-C 3038A
XL-C 3043A



XL-C 3039A
XL-C 3042A
XL-C 3000A
XL-C 3003A
XL-C 3004A



XL-C LH 3024A

Pull Handle - New Range

Model Number	Description	Ordering Code	Finish	CTC	Diameter	Length	MRP (INR)
XL-C 3070	Pull Handle D - Type	9110776	Gold PVD	300 mm	22 mm	322 mm	3,055.00
XL-C 3071	Pull Handle D - Type	9110777	Rose Gold PVD	300 mm	22 mm	322 mm	3,055.00
XL-C 3072	Pull Handle D - Type	9110778	Matt Black PVD	300 mm	22 mm	322 mm	2,790.00
XL-C 3073	Pull Handle H - Type	9110779	Gold PVD	300 mm	22 mm	400 mm	3,465.00
XL-C 3074	Pull Handle H - Type	9110780	Rose Gold PVD	300 mm	22 mm	400 mm	3,465.00
XL-C 3075	Pull Handle H - Type	9110781	Matt Black PVD	300 mm	22 mm	400 mm	3,120.00
XL-C 3076	Pull Handle H - Type	9110782	Gold PVD	350 mm	25 mm	450 mm	4,900.00
XL-C 3077	Pull Handle H - Type	9110783	Rose Gold PVD	350 mm	25 mm	450 mm	4,900.00
XL-C 3078	Pull Handle H - Type	9110784	Matt Black PVD	350 mm	25 mm	450 mm	4,700.00



XL-C 3070



XL-C 3071



XL-C 3072



XL-C 3073, XL-C 3076



XL-C 3074, XL-C 3077



XL-C 3075, XL-C 3078



Designer & Offset Pull Handle

Model Number	Description	Ordering Code	Finish	Material	CTC	Size / Diameter	MRP (INR)
XL-C 3049	Pull Handle - Square Shape	9119075	SS Matt	Zinc Alloy	450 mm	25x25	4,975.00
XL-C 3050	Pull Handle - Square Shape	9119076	Antique Brass	Zinc Alloy	450 mm	25x25	4,975.00
XL-C 3051	Pull Handle - Square Shape	9119077	Glossy Black PVD	Zinc Alloy	450 mm	25x25	5,500.00
XL-C 3052	Pull Handle - Square Shape	9118994	Matt Black PVD	Zinc Alloy	450 mm	25x25	5,500.00
XL-C 3057*	Offset Pull Handle D - Type	9127413	SSS	SS 304	350 mm	25	4,300.00
XL-C 3058*	Offset Pull Handle D - Type	9127414	SSS	SS 304	450 mm	25	4,880.00
XL-C 3059*	Offset Pull Handle D - Type	9127415	SSS	SS 304	600 mm	25	5,710.00
XL-C 3060*	Offset Pull Handle D - Type	9127435	Matt Black	SS 304	350 mm	25	5,330.00
XL-C 3061*	Offset Pull Handle D - Type	9127436	Matt Black	SS 304	450 mm	25	6,080.00
XL-C 3062*	Offset Pull Handle D - Type	9127437	Matt Black	SS 304	600 mm	25	6,745.00



XL-C 3049



XL-C 3050



XL-C 3051



XL-C 3057
XL-C 3058
XL-C 3059



XL-C 3060
XL-C 3061
XL-C 3062





Hygienic Touch Solution

Hygiene is of paramount importance today. This is non-negotiable. The need to access a door with physical touch sometimes may be inevitable in a building or a facility. A challenge to maintain hygiene today, touch becomes sacred to everyone accessing a door by touching the hardware. Anti-microbial protection is a preventive measure wherever touch is essential. Varied door hardware applications like door lever handles or a panic exit devices that frequently require physical operation can be protected from being a source of infection spread.

Anti-microbial coatings can be widely used in such hardware to provide hygienic, secure, and safe entry into rooms.

Model Number	Description	Ordering Code	Finish	CTC	Diameter	Length	MRP (INR)
XL-C 2001 AM	Lever Handle With Round Roses And Escutcheons. Anti-microbial	9125594	SSS	-	-	-	2,055.00
XL-C 3000H AM	Pull Handle H Type	9125592	SSS	300 mm	22 mm	400 mm	3,580.00



XL-C 2001 AM



XL-C 3000H AM





Hinge

Ensure that your doors move softly and effortlessly with the high performance ball bearing hinges offered by AIDO XL-C, which also guarantee outstanding load bearing capabilities and the absorption of axial and radial stresses. AIDO XL-C offers these hinges in a variety of sizes and lengths to accommodate different door types. They are also available in 304 grade stainless steel.

Model Number	Description	Ordering Code	Finish	MRP (INR)
XL-C 3005A	5 Knuckle, 4 Ball Bearing Butt Hinge (5" x 3.5" x 3 mm)	9127375	SSS	1,220.00
XL-C 3006A	5 Knuckle, 2 Ball Bearing Butt Hinge (5" x 3.5" x 3 mm)	9127376	SSS	1,220.00
XL-C 3035A	5 Knuckle, 2 Ball Bearing Butt Hinge (5" x 3" x 3 mm)	9121236	SSS	960.00
XL-C 3009A	5 Knuckle, 2 Ball Bearing Butt Hinge (4" x 3" x 3 mm)	9127329	SSS	630.00
XL-C 3036A	5 Knuckle, 2 Ball Bearing Butt Hinge* (4" X 3" X 3 mm)	9127341	SSS	650.00

* Supplied with machine screws for metal door

Grade - SS 304

* Hinge MRP given for Pair



XL-C 3005A



XL-C 3006A



XL-C 3035A



XL-C 3009A



XL-C 3036A

Seals

Seals runs through the perimeter on the doors to fill the gap between the door and frame as well as from floor to door bottom. It also provides noise reduction, fire resistance, smoke control, conservation of energy, accessibility and mobility.

Model Number	Description	Ordering Code	Finish	Length	MRP (INR)
XL-C 3079	Perimeter Seal	9118022	Black	1000 mm	555.00
XL-C 3080	Surface Mounted Automatic Drop Bottom Seal	9118020	Clear Anodized	920 mm	5,105.00
XL-C 3081	Surface Mounted Automatic Drop Bottom Seal	9118021	Clear Anodized	1050 mm	5,720.00
XL-C 3082	Concealed Automatic Drop Bottom Seal	9118005	Clear Anodized	920 mm	4,300.00
XL-C 3083	Concealed Automatic Drop Bottom Seal	9118006	Clear Anodized	1050 mm	4,580.00



Door Accessories

To offer you the complete range of door solutions at one stop, AIDO XL-C offers a variety of Door Accessories, including eye viewers, door chains, door guards, magnetic chains, door saddle plates, and sliding channels.

Model Number	Description	Ordering Code	Finish	MRP (INR)
XL-C 3013A	Manual Flush Bolt For Wooden Door	9127307	Satin	1,545.00
XL-C 3014A	Oval Flush Pull	9127333	Satin	385.00
XL-C 3019A	Spring Loaded Security Door Chain	9127338	Satin	1,215.00
XL-C 3066	Eye Viewer CP	9127423	CP	315.00
XL-C 3067	Eye Viewer With Flap CP	9127422	CP	375.00
XL-C 3089	Door Stop Half Dome SS	9127424	SS	240.00
XL-C 3090*	Door Stop Wall Mounted SS	9127425	SS	290.00
XL-C 3091*	Door Stop Foot Operated SS	9127426	SS	720.00
XL-C 3092*	Door Stop Magnetic SS	9127427	SS	785.00

Door Hardware



XL-C 3013A



XL-C 3014A



XL-C 3019A



XL-C 3066



XL-C 3067



XL-C 3089



XL-C 3090



XL-C 3091



XL-C 3092

Model Number	Description	Ordering	Finish	MRP (INR)
XL-C 3093*	Door Stop Hanging SS	9127428	SS	385.00
XL-C 3094*	Security Door Chain SS	9127429	SS	845.00
XL-C 3095*	Baby Latch SS	9127430	SS	835.00
XL-C 3096*	Baby Latch With Indicator SS	9127431	SS	955.00
XL-C 3100*	Tower Bolt (4")100mm	9117820	SS	240.00
XL-C 3101*	Tower Bolt (6")150mm	9117821	SS	380.00
XL-C 3102*	Tower Bolt (8")200mm	9117822	SS	520.00
XL-C 3103*	Tower Bolt (10")250mm	9117823	SS	625.00
XL-C 3104*	Tower Bolt (12")300mm	9117710	SS	750.00
XL-C 3105*	Tower Bolt (18")450mm	9117819	SS	1125.00



XL-C 3093



XL-C 3094



XL-C 3095



XL-C 3096



XL-C 3100, XL-C 3101, XL-C 3102, XL-C 3103, XL-C 3104, XL-C 3105

Door Accessories

Model Number	Description	Ordering Code	Finish	MRP (Rate/Meter)
XL-C 3021A	Parallel Arm Bracket for XL-C 1002S	9116623	Silver	695.00
XL-C 3034	Saddle Plate Suitable For XL-C 1004 Thickness 10-12 mm	9112491	Silver	2,260.00
XL-C 3023	Slide Channel Suitable For XL-C 1003, XL-C 1004	9112489	Silver	1,740.00
XL-C 3020A	Hold open Arm for XL-C 1002S	9116622	Silver	3050.00
XL-C 1014	Hold Open Unit For XL-C 1006	9115975	-	815.00
XL-C 1015	Hold open Unit for XL-C 3023	9121235	-	2295.00
XL-C 1016	Hold Open Unit Suitable With XL-C 3023	9121240	-	615.00



XL-C 3034



XL-C 3023



XL-C 1014



XL-C 1015



XL-C 1016

Floor Spring Accessories

Model Number	Description	Ordering Code	Finish	Maximum Width Of Door	Maximum Weight Of Door	MRP (INR)
XL-C 1012A	Wooden Door Accessories - Top Centre And Bottom Strap For XL-C 1007	9127388	STD	-	-	2,325.00
XL-C 1013A	Aluminium Door Accessories - Top Centre And Bottom Strap For XL-C 1007	9127389	STD	-	-	2,440.00



XL-C 1012A



XL-C 1013A



Glass Fittings

We are committed to protecting those that matter most to you while also providing you with superior functionality, updated technology and efficient services. In addition to the fusion of all these qualities, our glass fittings add an elegant touch, and also add transparency, elegance, light, and aesthetic appeal.

Patch Fitting

For single action and double-action doors to be equipped in a single-leaf and double-leaf configuration. The wide range of basic shapes and variants in this Patch Fittings program makes nearly any conceivable toughened-glass design possible.

Finish	Description	Top Patch	Bottom Patch	Top Pivot	Fanlight Patch
SS Polished Finish	Model Number	XL-C 4012	XL-C 4013	XL-C 4014	XL-C 4002
	Ordering Code	9137572	9137573	9137571	9137502
	MRP (INR)	2,570.00	2,570.00	410.00	3,440.00
Black Matt Finish	Model Number	XL-C 4212	XL-C 4213	XL-C 4214	XL-C 4202
	Ordering Code	9136235	9136236	9136237	9136238
	MRP (INR)	2,780.00	2,780.00	440.00	3,780.00
Gold PVD Finish	Model Number	XL-C 4312	XL-C 4313	XL-C 4314	XL-C 4302
	Ordering Code	9136248	9136249	9136250	9136251
	MRP (INR)	3,375.00	3,375.00	560.00	4,590.00
SS Matt Finish	Model Number	XL-C 4412	XL-C 4413	-	XL-C 4402
	Ordering Code	9136201	9136202	-	9136203
	MRP (INR)	2,435.00	2,435.00	-	3,440.00
Rose Gold PVD Finish	Model Number	XL-C 4512	XL-C 4513	XL-C 4514	XL-C 4502
	Ordering Code	9136261	9136262	9136263	9136264
	MRP (INR)	3,375.00	3,375.00	560.00	4,590.00

All products have SS316 grade covers



XL-C 4012A



XL-C 4013



XL-C 4014



XL-C 4002



Patch Fitting

Glass Patch Connector are used in connecting the fixed partitions, due to minimal no. of visible patches partitions gives clean & clear elegant look. Square shaped connector has space for holding the glass of fixed partition by the threaded bolt provided in the connector.

Finish	Description	Overpanel Patch	Connector For Overpanel & Sidelight	Central Connector	Corner Connector
SS Polished Finish	Model Number	XL-C 4003	XL-C 4004	XL-C 4006	XL-C 4007
	Ordering Code	9137503	9137505	9137504	9137523
	MRP (INR)	4170.00	3,590.00	1,255.00	1,275.00
Black Matt Finish	Model Number	XL-C 4203	XL-C 4204	XL-C 4206	XL-C 4207
	Ordering Code	9136239	9136240	9136241	9136242
	MRP (INR)	4,535.00	3,740.00	1,265.00	1,120.00
Gold PVD Finish	Model Number	XL-C 4303	XL-C 4304	XL-C 4306	XL-C 4307
	Ordering Code	9136252	9136253	9136254	9136255
	MRP (INR)	5,505.00	5,045.00	1,705.00	1,700.00
SS Matt Finish	Model Number	-	XL-C 4404	XL-C 4406	XL-C 4407
	Ordering Code	-	9136205	9136206	9136207
	MRP (INR)	-	3,590.00	1,275.00	1,255.00
Rose Gold PVD Finish	Model Number	XL-C 4503	XL-C 4504	XL-C 4506	XL-C 4507
	Ordering Code	9136265	9136266	9136267	9136268
	MRP (INR)	5,505.00	5,045.00	1,705.00	1,700.00



XL-C 4003



XL-C 4004



XL-C 4006



XL-C 4007



Patch Fitting

Glass Patch Connector are used in connecting the fixed partitions, due to minimal no. of visible patch partitions gives clean & clear elegant look. Square shaped connector has space for holding the glass of fixed partition by the threaded bolt provided in the connector.

Finish	Description	Side Connector	Quadrapole Connector	CornerLock With EPC	Floor Pivot
SS Polished Finish	Model Number	XL-C 4008	XL-C 4009	XL-C-4011	XL-C-4015
	Ordering Code	9137515	9137524	9137528	9137574
	MRP (INR)	1,655.00	3,340.00	3,765.00	3,295.00
Black Matt Finish	Model Number	XL-C 4208	XL-C 4209	XL-C 4211	-
	Ordering Code	9136243	9136244	9136245	-
	MRP (INR)	1,850.00	3,535.00	4,075.00	-
Gold PVD Finish	Model Number	XL-C 4308	XL-C 4309	XL-C 4311	-
	Ordering Code	9136256	9136257	9136258	-
	MRP (INR)	2,250.00	4,290.00	4,945.00	-
SS Matt Finish	Model Number	XL-C 4408	XL-C 4409	XL-C-4411	-
	Ordering Code	9136208	9136209	9136210	-
	MRP (INR)	1,735.00	3,340.00	3,565.00	-
Rose Gold PVD Finish	Model Number	XL-C 4508	XL-C 4509	XL-C 4511	-
	Ordering Code	9136269	9136270	9136271	-
	MRP (INR)	2,250.00	4,290.00	4,945.00	-



XL-C 4008



XL-C 4009



XL-C 4011



XL-C 4015

 Polished Chrome

 Matt Black

 Gold PVD

 SS Matt

 Rose Gold PVD

OSCILIO Series Glass Door Fittings

OSCILIO Series glass door hinges and locks are essential components in the design and functionality of interior glass doors.

These components contribute to the security, ease of use, and overall aesthetics of the frameless glass door design for rebated frames of 24 to 26mm.

Model Number	Description	Ordering Code	Finish	Glass Thickness	MRP (INR)
XL-C 5421	OSCILIO Curved Hinge	9130500	Aluminium Silver	8-10mm	2,545.00
XL-C 5422	OSCILIO Curved Lock With Strike Plate	9130501	Aluminium Silver	8-10mm	6,300.00
XL-C 5423	OSCILIO Lever Handle	9130502	Aluminium Silver	NA	2,245.00
XL-C 5431	OSCILIO Edge Hinge	9130503	Aluminium Silver	8-10mm	2,500.00
XL-C 5432	OSCILIO Edge Lock With Strike Plate	9130504	Aluminium Silver	8-10mm	6,300.00
XL-C 5441	OSCILIO Strike Box	9130505	Aluminium Silver	8-10mm	4,280.00
XL-C 5442	OSCILIO Corner Hinge (Top & Bottom)	9130506	Aluminium Silver	8-10mm	5,540.00

Glass thickness : 8-10mm, Max. Door Weight 50Kg/Pair, Max. Door Width: 900mm

*Euro Profile cylinders(EPC) need to be purchased separately.



XL-C 5421



XL-C 5422



XL-C 5423



XL-C 5431



XL-C 5432



XL-C 5441



XL-C 5442

OSCILIO Series Glass Door Fittings

Model Number	Description	Ordering Code	Finish	Glass Thickness	MRP (INR)
XL-C 5424	OSCILIO Curved Hinge	9130507	Black Matt	8-10mm	2,650.00
XL-C 5425	OSCILIO Curved Lock With Strike Plate	9130508	Black Matt	8-10mm	6,515.00
XL-C 5426	OSCILIO Lever Handle	9130509	Black Matt	NA	2,545.00
XL-C 5434	OSCILIO Edge Hinge	9130510	Black Matt	8-10mm	2,605.00
XL-C 5435	OSCILIO Edge Lock With Strike Plate	9130511	Black Matt	8-10mm	6,515.00
XL-C 5443	OSCILIO Strike Box	9130512	Black Matt	8-10mm	4,365.00
XL-C 5444	OSCILIO Corner Hinge (Top & Bottom)	9130513	Black Matt	8-10mm	5,800.00

Glass thickness : 8-10mm, Max. Door Weight 50Kg/Pair, Max. Door Width: 900mm

*Euro Profile cylinders(EPC) need to be purchased separately.



XL-C 5424



XL-C 5425



XL-C 5426



XL-C 5434



XL-C 5435



XL-C 5443



XL-C 5444

Shower Hardware

Shower Swing Fittings

Hydroflow X-Series

Traditional frame less full glass showers with a hidden spring mechanism offer self-closing at a 20° opening angle. Corrosion resistant brass hinges and brackets help create customized layouts which work to separate wet and dry areas. Hinges with two actions allow for both inside and outward opening. The comprehensive range of shower systems, with brass as the base metal, offers applications for all conceivable situations.

Model Number	Description	Ordering Code	Glass Thickness	Finish	MRP (INR)
XL-C-5001	G/W Hinge 90°	9138022	8/10 mm	Polish Chrome	3,445.00
XL-C-5002	G/W Bracket 90° (Big)	9138027	8/10 mm	Polish Chrome	3,445.00
XL-C-5003	G/G Hinge 90°	9138023	8/10 mm	Polish Chrome	5,955.00
XL-C-5004	G/G Hinge 180°	9138024	8/10 mm	Polish Chrome	5,955.00
XL-C-5005	G/G Hinge 135°	9138026	8/10 mm	Polish Chrome	5,955.00
XL-C-5017	G/G Bracket 90°	9137543	8/10 mm	Polish Chrome	6,160.00
XL-C-5006	G/W Bracket 90°(Small)	9131702	8/10 mm	Polish Chrome	1,515.00
XL-C-5028	G/W hinge 90° SNGL side plate	9138090	8/10 mm	Polish Chrome	3,525.00

Salt spray tested, Base material: Brass

Glass to wall - G/W, Glass to glass - G/G, SNGL- Single



XL-C 5001



XL-C 5002



XL-C 5003



XL-C 5005



XL-C 5017



XL-C 5006



XL-C 5028

Shower Swing Fittings

Hydroflow X-Series

Model Number	Description	Ordering Code	Finish	MRP (INR)
XL-C 5029	G/W Bracket 90° SNGL Sideplate	9138091	Polish Chrome	3,525.00
XL-C 8001	G/W Hinges 90°	9138080	Polish Chrome	3,445.00
XL-C 8002	G/W Bracket 90°	9138081	Polish Chrome	3,445.00
XL-C 8003	G/G Hinges 90°	9138082	Polish Chrome	5,955.00
XL-C 8004	G/G Hinges 180°	9138084	Polish Chrome	5,955.00
XL-C 8005	G/G Hinges 135°	9138085	Polish Chrome	5,955.00
XL-C 8006	G/W Bracket - Small	9138086	Polish Chrome	915.00
XL-C 8007	XL-C 8007 G/G Bracket 90°	9142004	Polish Chrome	1,575.00

Salt spray tested, Base material: Brass
 Glass to wall - G/W, Glass to glass - G/G, SNGL- Single



XL-C 5029



XL-C 8001



XL-C 8002



XL-C 8003



XL-C 8004



XL-C 8005



XL-C 8006



XL-C 8007

Shower Swing Fittings

Hydroflow X-Series

Model Number	Description	Ordering Code	Finish	MRP (INR)
XL-C 8008	G/W Bracket Small Without Backplate	9142025	Polish Chrome	840.00
XL-C 8009	G/G Bracket 135° Small	9142026	Polish Chrome	1,670.00
XL-C 8010	G/G Bracket 180° Small	9142027	Polish Chrome	1,670.00
XL-C 8011	G/W Bracket Inline Back Small	9142028	Polish Chrome	1,505.00
XL-C 8017	XL-C 8017 G/G Bracket 90°	9138083	Polish Chrome	5,870.00
XL-C 8041	G/W Hinges 90° SNGL Side Plate	9138092	Polish Chrome	3,445.00
XL-C 8042	G/W Bracket 90° SNGL Sideplate	9138093	Polish Chrome	3,445.00
XL-C 8043	G/G T Hinge	9136004	Polish Chrome	12,790.00

Salt spray tested, Base material: Brass
 Glass to wall - G/W, Glass to glass - G/G, SNGL- Single



XL-C 8008



XL-C 8009



XL-C 8010



XL-C 8011



XL-C 8017



XL-C 8041



XL-C 8042



XL-C 8043

Shower Swing Fittings

Hydroflow Y-Series

Finish	Description	SSH G/W Hinge 90° DSP	SSH G/W Bracket 90° DSP	SSH G/G Hinge 90°	SSH G/G Hinge 180°	SSH G/G Hinge 135°
SS Polished Finish	Model Number	XL-C 8101	XL-C 8102	XL-C 8103	XL-C 8104	XL-C 8105
	Ordering Code	9130397	9130398	9130399	9130400	9130401
	MRP (INR)	2,955.00	2,955.00	4,820.00	4,820.00	4,820.00
Black Matt Finish	Model Number	XL-C 8201	XL-C 8202	XL-C 8203	XL-C 8204	XL-C 8205
	Ordering Code	9130420	9130421	9130422	9130423	9130424
	MRP (INR)	3,655.00	3,655.00	5,965.00	5,965.00	5,965.00
Gold PVD Finish	Model Number	XL-C 8301	XL-C 8302	XL-C 8303	XL-C 8304	XL-C 8305
	Ordering Code	9130443	9130444	9130445	9130446	9130447
	MRP (INR)	4,590.00	4,590.00	7,485.00	7,485.00	7,485.00
Rose Gold PVD Finish	Model Number	XL-C 8501	XL-C 8502	XL-C 8503	XL-C 8504	XL-C 8505
	Ordering Code	9130466	9130467	9130468	9130469	9130470
	MRP (INR)	4,590.00	4,590.00	7,485.00	7,485.00	7,485.00

Salt spray tested, Material grade: Brass
Glass to wall - G/W, Glass to glass - G/G, SNGL- Single



XL-C 8101



XL-C 8102



XL-C 8103



XL-C 8104



XL-C 8105

Polished Chrome
 Matt Black
 Gold PVD
 Rose Gold PVD

Shower Swing Fittings

Hydroflow Y-Series

Finish	Description	SSH G/W Bracket - Small	SSH G/G Bracket 90° - Small	SSH G/W Bracket Small Without Plate	SSH G/G Bracket 135° Small	SSH G/G Bracket 180° Small
Polished Finish	Model Number	XL-C 8106	XL-C 8107	XL-C 8108	XL-C 8109	XL-C 8110
	Ordering Code	9130402	9130403	9130404	9130405	9130406
	MRP (INR)	835.00	1,350.00	760.00	1,435.00	1,435.00
Black Matt Finish	Model Number	XL-C 8206	XL-C 8207	XL-C 8208	XL-C 8209	XL-C 8210
	Ordering Code	9130425	9130426	9130427	9130428	9130429
	MRP (INR)	1,035.00	1,670.00	940.00	1,775.00	1,775.00
Gold PVD Finish	Model Number	XL-C 8306	XL-C 8307	XL-C 8308	XL-C 8309	XL-C 8310
	Ordering Code	9130448	9130449	9130450	9130451	9130452
	MRP (INR)	1,300.00	2,095.00	1,180.00	2,225.00	2,225.00
Rose Gold PVD Finish	Model Number	XL-C 8506	XL-C 8507	XL-C 8508	XL-C 8509	XL-C 8510
	Ordering Code	9130471	9130472	9130473	9130474	9130475
	MRP (INR)	1,300.00	2,095.00	1,180.00	2,225.00	2,225.00

Salt spray tested, Base material: Brass
 Glass to wall - G/W, Glass to glass - G/G, SNGL - Single



XL-C 8106



XL-C 8107



XL-C 8108



XL-C 8109



XL-C 8110

Polished Chrome
 Matt Black
 Gold PVD
 Rose Gold PVD

Shower Swing Fittings

Hydroflow Y-Series

Glass Fittings

Finish	Description	SSH G/W Bracket Inline Back Small	SSH G/G Bracket 90°	SSH G/W Hinge 90°	SSH G/W Bracket 90° SNGL Sideplate	SSH G/G T Hinge
Polished Finish	Model Number	XL-C 8111	XL-C 8117	XL-C 8141	XL-C 8142	XL-C 8143
	Ordering Code	9130407	9130408	9130409	9130410	9130411
	MRP (INR)	1,290.00	4,750.00	2,955.00	2,955.00	9,315.00
Black Matt Finish	Model Number	XL-C 8211	XL-C 8217	XL-C 8241	XL-C 8242	XL-C 8243
	Ordering Code	9130430	9130431	9130432	9130433	9130434
	MRP (INR)	1,595.00	5,880.00	3,655.00	3,655.00	11,650.00
Gold PVD Finish	Model Number	XL-C 8311	XL-C 8317	XL-C 8341	XL-C 8342	XL-C 8343
	Ordering Code	9130453	9130454	9130455	9130456	9130457
	MRP (INR)	2,000.00	7,380.00	4,590.00	4,590.00	14,900.00
Rose Gold PVD Finish	Model Number	XL-C 8511	XL-C 8517	XL-C 8541	XL-C 8542	XL-C 8543
	Ordering Code	9130476	9130477	9130478	9130479	9130480
	MRP (INR)	2,000.00	7,380.00	4,590.00	4,590.00	14,900.00

Salt spray tested, Base material: Brass
Glass to wall - G/W, Glass to glass - G/G, SNGL- Single



XL-C 8111



XL-C 8117



XL-C 8141



XL-C 8142



XL-C 8143

Polished Chrome
 Matt Black
 Gold PVD
 Rose Gold PVD

Shower Sliding Fittings

Sliding Shower System in chrome and anodized finishes as a complete kit. Premium sliding showers can enhance the aesthetic and beauty of any bath area.

Model Number	Description	Ordering Code	Finish	Max Door size	Max Height	Glass Thickness	MRP (INR)
XL-C 7013	Sliding Shower System 2m Track Fixed Glass	9137556	Anodised	750 mm	2.5 mtrss	8 mm	42,115.00
XL-C 7042	Sliding Shower System SSD Without WCP	9137882	Polish Chrome	750 mm	2 mtrss	8 mm	41,425.00
XL-C 7036	Sliding Shower System 3m Track 180°	9101333	Aluminium Anodized	600 mm	2.5 mtrss	8 mm (LH, RH)	62,200.00
XL-C 7037	Sliding Shower System 3m Track 90°	9101334	Anodised	600 mm per leaf	2.5 mtrss	8 mm (LH, RH)	64,255.00

Accessories in polished chrome finish

Kit contains	XL-C 7013	XL-C 7042	XL-C 7036	XL-C 7037
Fixed Glass Track with Clamps & screws	2 mtrs	2 mtrs	3 mtrs	3 mtrs
Two sets of geared rollers with end stopper	Standard	Standard	Standard	Standard
WCP for fixed glass	1No	1No	2 Nos	2 Nos
Magnetic seal with profile	90°	90°	180°	90°
Water Dispenser, Door Knob set	Yes	Yes	Yes	Yes



EZYSLIDE Slidings Shower System

EZYSLIDE Sliding Shower system providing a convenient and space-saving solution for shower access. This system typically includes various components that enable the smooth sliding motion of the shower door.

The primary purpose of a shower sliding system is to offer easy entry and exit to the shower space while maximizing the use of available bathroom space separating wet and dry areas.

Model Number	Description	Ordering Code	Finish	MRP (INR)
XL-C 7065	EZYSLIDE Sliding ShowerSystem for Single Sliding	9138016	Polished Chrome	9,835.00
XL-C 7066	EZYSLIDE Sliding Shower Sytem for 90°(L Shape)	9138017	Polished Chrome	19,375.00
XL-C 7067	EZYSLIDE Sliding ShowerSystem for Single Sliding	9138018	Black Matt	10,675.00
XL-C 7068	EZYSLIDE Sliding Shower Sytem for 90°(L Shape)	9138019	Black Matt	20,760.00

Glass thickness : 8mm, Max. Door Weight 60Kgs, Max. Door Width: 900mm, Max. Door Height 2000mm

Description	XL-C 7065/7067	XL-C 7066/7068
Aluminium Track (2mtr Length)	1 No.	2 Nos.
Rollers(SS304) with Glass Holder	2 Nos.	4 Nos.
Stopper	2 Nos.	4 Nos.
Track Fixing Brackets (LH & RH)	2 Nos.	4 Nos.
Floor Guide	1 No.	2 Nos.
Flush Pull Knob	1 No.	2 Nos.
90° Corner Connectors	NA	1 No.



Aluminum Track
(2mtr Length)



Rollers(SS304)
with Glass holder



Stopper



Track Fixing Brackets
(LH & RH)



Floor Guide



Flush Pull Knob



90° Corner
Connectors

Optional Accessories

Model Number	Description	Ordering Code	Finish	MRP (INR)
XL-C 7069	EZYSLIDE Water Dispenser 2M	9138020	NA	845.00
XL-C 7070	EZYSLIDE F Seal For 6-8MM 2.4M	9138021	NA	1565.00
XL-C 7071	EZYSLIDE Magnetic Support Prof.	9138014	Natural Anodized	770.00
XL-C 8108	SSH G/W Bracket Small Without Plate	9130404	Polished Chrome	760.00
XL-C 8208	SSH G/W Bracket Small without Plate	9130427	Black	940.00
XL-C 5012	Magnetic seal 90°	9138033	NA	1945.00
XL-C 5013	Magnetic seal 180°	9138034	NA	1945.00



XL-C 7066/XL-C 7068



XL-C 7065/XL-C 7067

Shower Seals

Shower door seal or strip for bathroom doors, shower enclosures or cubicles, and glass hardware for buildings or furnishings. For usage in cubicles, every profile is created in a cutting-edge tool room with the support of a highly technical staff and a skilled manufacturing team. In accordance with the demands of our cherished clients, we specialize in creating personalized profiles.

Model Number	Description	Ordering Code	Glass Thickness	Length of Seal	MRP (INR)
XL-C 5007	Water Dispenser	9138028	8-10 mm	2000 mm	755.00
XL-C 5013	Magnetic Seal 180°	9138034	8-10 mm	2500 mm	1,945.00
XL-C 8028	Soft Nose Seal	9134760	8-10 mm	2500 mm	585.00
XL-C 3044	Middle Seal 180°	9134762	8-10 mm	2500 mm	585.00
XL-C 5012	Magnetic Seal 90°	9138033	8-10 mm	2500 mm	1,945.00
XL-C 5014	Magnetic Seal 135°	9138035	8-10 mm	2500 mm	1,945.00
XL-C 8030	Wall Seal	9134768	8 mm	2500 mm	585.00
XL-C 3046	Middle Seal 135°	9134770	8 mm	2500 mm	685.00
XL-C 5010	Mid Seal	9138031	8 mm	2500 mm	535.00



XL-C 5007



XL-C 5013



XL-C 8028



XL-C 5012



XL-C 5014



XL-C 8030



XL-C 5011

Hydroflow X-Series Shower Accessories

These Shower Accessories enhance the appeal of your shower as they are made from high-quality materials. By selecting thoughtfully designed Shower Accessories from our selection, you can finish the appearance and functionality of your shower or powder room.

Model Number	Description	Ordering Code	Finish	MRP (INR)
XL-C 5015A	Towel Rod with Handle (458 x 205 x 19 mm) -Material Grade SS	9138036	Polish Chrome	4,875.00
XL-C 5018A	Support Bar 2.1 mtrs- Material Grade SS	9138062	Polish Chrome	3,510.00
XL-C 5019A	Wall Clamp	9138063	Polish Chrome	2,295.00
XL-C 5020A	Support Bar Glass Clamp for 8 mm -Material Grade SS	9138064	Polish Chrome	1,720.00
XL-C 5021A	L Connector	9138065	Polish Chrome	1,880.00
XL-C 5022A	T Connector	9138066	Polish Chrome	2,040.00



XL-C 5015A



XL-C 5019A



XL-C 5020A



XL-C 5021A



XL-C 5022A

Hydroflow X-Series Shower Accessories

Model Number	Description (Material Grade SS)	Ordering Code	Finish	MRP (INR)
XL-C 5023A	Door Knob	9142007	Polish Chrome	1,565.00
XL-C 5024A	Pentagonal Support Bar- Material Grade SS	9137317	Polish Chrome	5,330.00
XL-C 5027A	Support Bar Glass Clamp for 10 mm -Material Grade SS	9142006	Polish Chrome	1,850.00
XL-C 8021A	Towel Rod with Handle (458x205x19 mm) -Material Grade SS	9138089	Polish Chrome	2,965.00
XL-C 8033A	Towel Rod with small Handle (457x152x19 mm) -Material Grade SS	9138099	Polish Chrome	2,960.00
XL-C 8233*	Towel Rod with Small Handle	9133915	Matt Black	3,230.00
XL-C 8333*	Towel Rod with Small Handle	9133916	Gold PVD	3,575.00
XL-C 8533*	Towel Rod with Small Handle	9133917	Rose Gold PVD	3,575.00



XL-C 5023A



XL-C 5024A



XL-C 5027A



XL-C 8021A



XL-C 8033A

Hydroflow Y-Series Shower Accessories

Finish	Description	SSH Towel Rod*	SSH Support Bar 2.1mtrs	SSH Wall Clamp	SSH Support Bar Glass Clamp
SS Polished Finish	Model Number	XL-C 5115	XL-C 5118	XL-C 5119	XL-C 5120
	Ordering Code	9130412	9130419	9130413	9130414
	MRP (INR)	4,020.00	3,380.00	1,300.00	975.00
Black Matt Finish	Model Number	XL-C 5215	XL-C 5218	XL-C 5219	XL-C 5220
	Ordering Code	9130435	9130442	9130436	9130437
	MRP (INR)	4,980.00	4,310.00	1,655.00	1,240.00
Gold PVD Finish	Model Number	XL-C 5315	XL-C 5318	XL-C 5319	XL-C 5320
	Ordering Code	9130458	9130465	9130459	9130460
	MRP (INR)	6,245.00	5,410.00	2,075.00	1,560.00
Rose Gold PVD Finish	Model Number	XL-C 5515	XL-C 5518	XL-C 5519	XL-C 5520
	Ordering Code	9130481	9130488	9130482	9130483
	MRP (INR)	6,245.00	5,410.00	2,075.00	1,560.00

*Handle with towel rod 458x205x19 mm
Support Bar- Material Grade SS



XL-C 5115



XL-C 5119



XL-C 5120



Hydroflow Y-Series Shower Accessories

Finish	Description	SSH L-Connector	SSH T-Connector	SSH Door Knob	SSH Support Bar Glass Clamp
SS Polished Finish	Model Number	XL-C 5121	XL-C 5122	XL-C 5123	XL-C 5127
	Ordering Code	9130415	9130416	9130417	9130418
	MRP (INR)	1,330.00	1,445.00	1,270.00	1,045.00
Black Matt Finish	Model Number	XL-C 5221	XL-C 5222	XL-C 5223	XL-C 5227
	Ordering Code	9130438	9130439	9130440	9130441
	MRP (INR)	1,695.00	1,840.00	1,615.00	1,335.00
Gold PVD Finish	Model Number	XL-C 5321	XL-C 5322	XL-C 5323	XL-C 5327
	Ordering Code	9130461	9130462	9130463	9130464
	MRP (INR)	2,125.00	2,310.00	2,025.00	1,670.00
Rose Gold PVD Finish	Model Number	XL-C 5521	XL-C 5522	XL-C 5523	XL-C 5527
	Ordering Code	9130484	9130485	9130486	9130487
	MRP (INR)	2,125.00	2,310.00	2,025.00	1,670.00



XL-C 5121



XL-C 5122



XL-C 5123



XL-C 5127



Manual Sliding Door Systems

Basic Single Door Fittings (Wooden Door Application)

AIDO XL-C Sliding Door mechanisms are finger-touch sliders with sleek tracks. The Sliding tracks provide noise-free smooth opening and closing with a bottom guide keeping your floor without any obstruction of floor tracks. The Sliding Door roller mechanism comes for various door weights up to 120 kg.

Model Number	Description (Kit Contains Clamping Accessories)	Ordering Code	Weight Capacity	Max Door Height (mm)	Max Door Width (mm)	MRP (INR)
XL-C 7001 2M WA80	Wooden Sliding Door System	9137544	80	2400	1000	8,875.00
XL-C 7003 2M WA120	Wooden Sliding Door System	9137546	120	2700	1000	12,710.00
XL-C 7002 3M WA80	Wooden Sliding Door System	9137545	80	2400	1500	10,485.00
XL-C 7004 3M WA120	Wooden Sliding Door System	9137547	120	2700	1500	14,325.00
XL-C 7022 3M WA80 BS	Wooden Sliding Door System	9137576	80	2400	750	16,350.00
XL-C 7023 3M 3M WA120BS	Wooden Sliding Door System	9137577	100	2700	750	24,020.00

Finish: Aluminium Anodized

Technical Data	XL-C 7001	XL-C 7002	XL-C 7003	XL-C 7004	XL-C 7022	XL-C 7023
Track Length, mm	2000	3000	2000	3000	3000	3000
Door Thickness, Ceiling Mounting, mm	28 - 40	28 - 45	28 - 45	28 - 50	28 - 40	28 - 45
Door Thickness, Wall Mounting, mm	28 - 32	28 - 35	28 - 32	28 - 35	28 - 32	28 - 35
Bi-parting Possibility	NO	NO	NO	NO	YES	YES
Two Roller With Two End Stopper & Door Guide	Standard	Standard	Heavy	Heavy	Standard	Heavy

Optional accessories

Hook Lock for wooden sliding door : XL-C 2014

Oval flush pull : XL-C 3014A

EPC - 60 mm / 70 mm



XL-C 7001/ XL-C 7003/ XL-C 7002/ XL-C 7004

Basic Single Door Fittings (Glass Door Application)

AIDO XL-C Sliding door mechanisms (Glass door application) are finger-touch sliders with sleek tracks. The Sliding tracks provide noise-free smooth opening and closing with a bottom guide keeping your floor without any obstruction of floor tracks. The Sliding Door roller mechanism comes for various door weights up to 100 kg.

Model Number	Description (Kit Contains Clamping Accessories)	Ordering Code	MRP (INR)
XL-C 7005 2M GL80	Glass Sliding Door System (Without Fixed Panel)	9137548	20,450.00
XL-C 7006 3M GL80	Glass Sliding Door System (Without Fixed Panel)	9137549	22,145.00
XL-C 7007 2M GL100	Glass Sliding Door System (Without Fixed Panel)	9137550	30,065.00
XL-C 7008 3M GL100	Glass Sliding Door System (Without Fixed Panel)	9137551	31,755.00
XL-C 7024 3M GL80 BS	Glass Sliding Door System (Without Fixed Panel)	9137578	39,425.00
XL-C 7025 3M GL100 BS	Glass Sliding Door System (Without Fixed Panel)	9137579	58,660.00

Technical Data	XL-C 7005	XL-C 7006	XL-C 7007	XL-C 7008	XL-C 7024	XL-C 7025
Weight Capacity / Shutter, kg	80	80	100	100	80	100
Track Length, mm	2000	3000	2000	3000	3000	3000
Max Door Height, mm	2400	2400	2700	2700	2400	2700
Max Door Width, mm	1000	1500	1000	1500	750	750
Glass Door Thickness, mm	8 - 10	8 - 10	10 - 12	10 - 12	8 - 10	10 - 12
Bi-Parting Possibility	NO	NO	NO	NO	YES	YES
Two roller with Two end stopper & Door guide	Standard	Standard	Heavy	Heavy	Standard	Heavy

Optional accessories : (Refer page 54)

Hook lock for glass sliding door towards wall : XL-C 7019

Hook lock for glass sliding door towards glass : XL-C 7121

Circular flush pull : XL-C 7018



XL-C 7005 2M GL80
 XL-C 7006 3M GL80
 XL-C 7007 2M GL100
 XL-C 7008 3M GL100

Sliding Door (Glass Door Application - With Fixed Panel)

AIDO XL-C Sliding door mechanisms (Glass door application) are finger-touch sliders with sleek tracks. The Sliding tracks provide noise - free smooth opening and closing with a bottom guide keeping your floor without any obstruction of floor tracks. The Sliding Door roller mechanism comes for various door weights up to 100 kg.

Model Number	Description (Kit Contains Fixed Glass Track With Screws, 2 Standard Rollers With 2 End Stoppers & 1 Door Guide)	Ordering Code	MRP (INR)
XL-C 7009 2M GLF80	Glass Sliding Door System (With Fixed Panel)	9137552	21,460.00
XL-C 7010 3M GLF80	Glass Sliding Door System (With Fixed Panel)	9137553	23,665.00
XL-C 7011 2M GLF100	Glass Sliding Door System (With Fixed Panel)	9137554	31,070.00
XL-C 7012 3M GLF100	Glass Sliding Door System (With Fixed Panel)	9137555	33,275.00
XL-C 7026 3M GLF80 BS	Glass Sliding Door System (With Fixed Panel)	9137580	40,715.00
XL-C 7027 3M GLF100 BS	Glass Sliding Door System (With Fixed Panel)	9137581	59,940.00

Technical Data	XL-C 7009	XL-C 7010	XL-C 7011	XL-C 7012	XL-C 7026	XL-C 7027
Weight Capacity / Shutter, kg	80	80	100	100	80	100
Track Length, mm	2000	3000	2000	3000	3000	3000
Max Door Height, mm	2400	2400	2700	2700	2400	2700
Max Door Width, mm	1000	1500	1000	1500	750	750
Glass Door Thickness, mm	8 - 10	8 - 10	10 - 12	10 - 12	8 - 10	10 - 12
Fixed Glass Door Thickness, mm	8 - 10	8 - 10	8 - 10	8 - 10	8 - 10	8
BI Parting Possibility	NO	NO	NO	NO	YES	YES
Two Roller With Two End Stopper & Door Guide	Standard	Standard	Heavy	Heavy	Standard	Heavy

Optional Accessories : (Refer Page 54)

Hook Lock for Glass Sliding door towards Wall : XL-C 7019

Hook Lock for Glass Sliding door towards Glass : XL-C 7121

Circular Flush Pull : XL-C 7018



XL-C 7009 2M GLF80
XL-C 7011 2M GLF100



XL-C 7010 3M GLF80
XL-C 7012 3M GLF100

Manual Sliding Door System (Tracks)

AIDO XL-C Sliding Door Track & accessories enables one to choose multiple options which can opt for suitable solutions.

Model Number	Description	Ordering Code	Finish	MRP (INR)
XL-C 7044	Track Without Fixed Panel - 2 mtrs	9137541	Aluminium Anodized	2,715.00
XL-C 7045	Track Without Fixed Panel - 3 mtrs	9137542	Aluminium Anodized	4,365.00
XL-C 7046	Track Without Fixed Panel - 4 mtrs	9137540	Aluminium Anodized	5,430.00
XL-C 7047	Track Without Fixed Panel - 2 mtrs	9137539	Aluminium Anodized	3,695.00
XL-C 7048	Track Without Fixed Panel - 3 mtrs	9137538	Aluminium Anodized	5,835.00
XL-C 7049	Track Without Fixed Panel - 4 mtrs	9137537	Aluminium Anodized	7,395.00



XL-C 7044



XL-C 7045



XL-C 7046



XL-C 7047



XL-C 7048



XL-C 7049

Manual Sliding Door System (Accessories)

Model Number	Description	Ordering Code	Finish	MRP (INR)
XL-C 7050	Timber Door Roller Set - 80 kg	9137536	-	6,335.00
XL-C 7051	Timber Door Roller Set - 120 kg	9137535	-	10,250.00
XL-C 7052	Glass Door Roller Set - 80 kg	9137534	Polish Chrome	17,660.00
XL-C 7053	Glass Door Roller Set - 100 kg	9137533	Polish Chrome	27,270.00
XL-C 7054	Magnetic Support Profile - 2.5M	9137862	Polish Chrome	5,390.00



XL-C 7050



XL-C 7051



XL-C 7052



XL-C 7053

Justo Slide System

Basic Sliding System Without Dormotion

Justo Basic Sliding System is designed for wooden/glass sliding panels. The system has silent running rollers with POM wheels highly resistant to abrasion. Option of having a soft opening /soft closing additionally.

Model Number	Description	Ordering Code	Finish	Weight	MRP (INR)
XL-C 7201	JS Wooden Sliding Accessories Without Door Motion	9136101	Aluminium Anodized	50 kgs	2,930.00
XL-C 7202	JS Wooden Sliding Accessories Without Door Motion	9136102	Aluminium Anodized	80 kgs	3,510.00
XL-C 7203	JS Wooden Sliding Accessories Without Door Motion	9136103	Aluminium Anodized	120 kgs	3,825.00
XL-C 7209	JS Glass Sliding Accessories Without Door Motion	9136109	Aluminium Anodized	50 kgs	6,025.00
XL-C 7210	JS Glass Sliding Accessories Without Door Motion	9136110	Aluminium Anodized	80 kgs	6,580.00
XL-C 7211	JS Glass Sliding Accessories Without Door Motion	9136111	Aluminium Anodized	120 kgs	8,890.00

*Tracks to be ordered separately

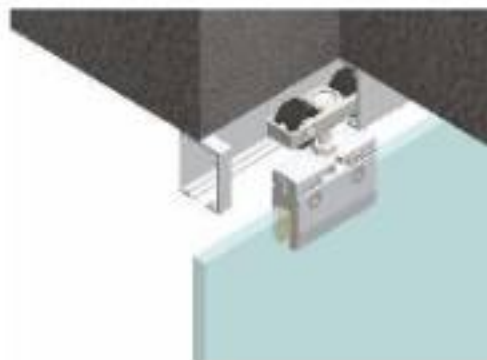


XL-C 7201, XL-C 7202, XL-C 7203

XL-C 7209, XL-C 7210



XL-C 7211



Synchro Sliding System & Corner Fitting

Justo Synchro Sliding Systems are designed for wooden/glass double-leaf or Bi-parting sliding panels with synchronized closing or opening action. The system contains a pulley and a toothed belt to operate the door panel simultaneously with 1 finger.

Justo Corner fittings allow to open and close 2 panels (1+1), and 4 panels(2+2) at installation angles ranging from 80-120° in a simultaneous synchronized way.

Model Number	Description	Ordering Code	Finish	Weight	MRP (INR)
XL-C 7204	JS Wooden Synchro Accessories Without Door Motion	9136104	Aluminium Anodized	80 kgs	20,155.00
XL-C 7205	JS Wooden Synchro Accessories Without Door Motion	9136105	Aluminium Anodized	120 kgs	23,030.00
XL-C 7212	JS Glass Synchro Accessories Without Door Motion	9136112	Aluminium Anodized	80 kgs	34,985.00
XL-C 7213	JS Glass Synchro Accessories Without Door Motion	9136113	Aluminium Anodized	120 kgs	37,880.00
XL-C 7271	JS 90° Corner Synchro fitting	9137084	Aluminium Anodized	-	4,085.00

*Tracks to be ordered separately



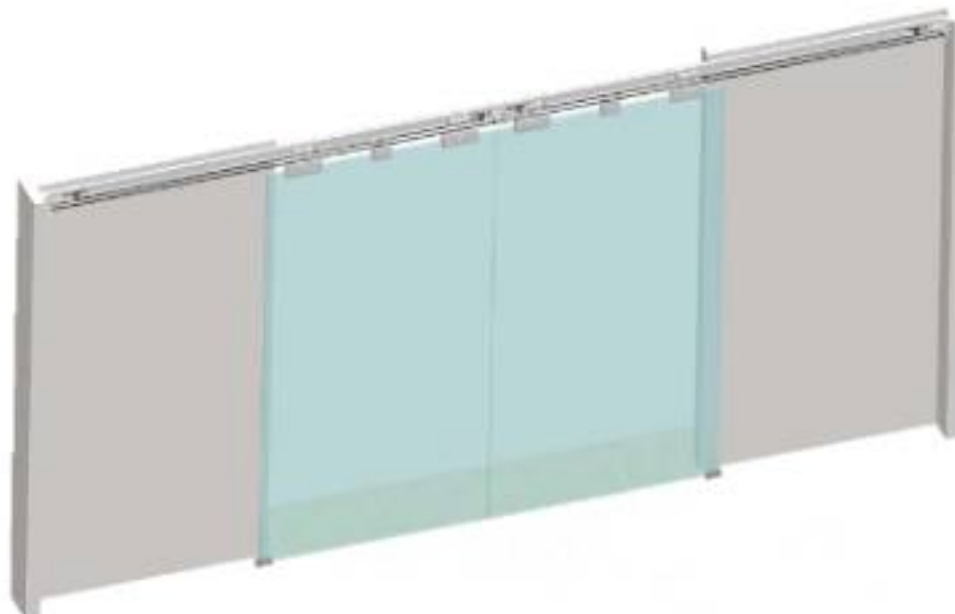
XL-C 7204, XL-C 7205



XL-C 7212



XL-C 7213



Telescopic Sliding System

Justo Telescopic Sliding System is designed for Wooden/Glass multiple sliding panels to slide over each other to cover the wide opening. The system contains a pulley and toothed belt to close or open the door panel progressive way with low effort.

Justo's Dual sliding system allows you to open and close 4 panels progressively with low effort.

Model Number	Description	Ordering Code	Finish	Weight	MRP (INR)
XL-C 7206	.JS Wooden Telescopic 0+2 Accessories Without Door Motion	9136106	Aluminium Anodized	80 kgs	15,385.00
XL-C 7207	.JS Wooden Telescopic 0+3 Accessories Without Door Motion	9136107	Aluminium Anodized	120 kgs	30,000.00
XL-C 7208	.JS Wooden Telescopic 2+2 Accessories Without Door Motion	9136108	Aluminium Anodized	80 kgs	48,760.00
XL-C 7214	.JS Glass Telescopic 0+2 Accessories Without Door Motion	9136114	Aluminium Anodized	80 kgs	28,280.00

*Tracks to be ordered separately



XL-C 7206



XL-C 7207



XL-C 7208

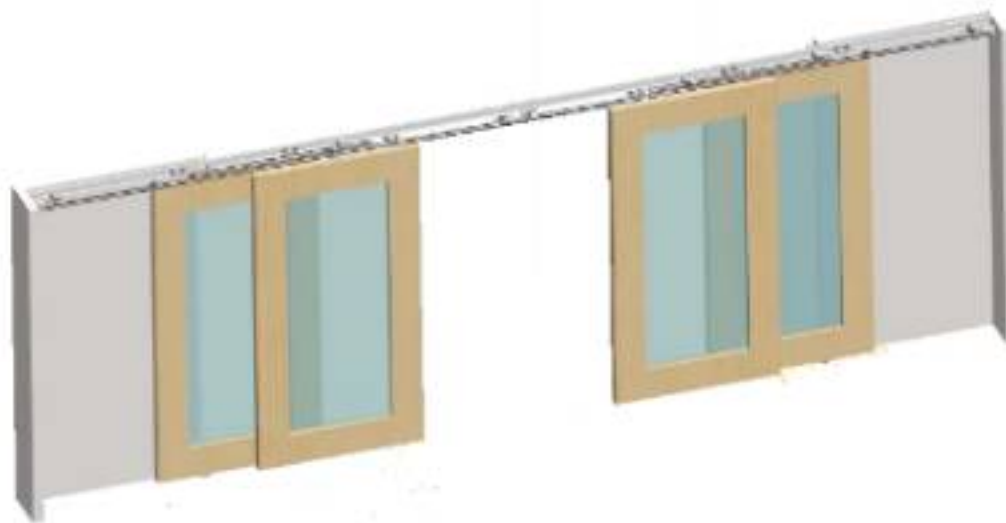


XL-C 7214

Telescopic Sliding System

Model Number	Description	Ordering Code	Finish	Weight	MRP (INR)
XL-C 7215	JS Glass Telescopic 0+3 Accessories Without Door Motion	9136115	Aluminium Anodized	120 kgs	49,385.00
XL-C 7216	JS Glass Telescopic 2+2 Accessories Without Door Motion	9136116	Aluminium Anodized	80 kgs	78,030.00
XL-C 7272	JS Wooden Telescopic Dual 0+4 Accessories Without Door Motion	9137085	Aluminium Anodized	80 kgs	38,000.00

*Tracks to be ordered separately



Telescopic Sliding Systems



Self Closing Sliding System

Justo Slide is designed for wooden/glass sliding panels with a special feature of self-closing operation. The self-closing action is mechanically activated by an extendable nylon cable, and the retaining system allows the sliding panel to stay in an open position for a short period if required.

Model Number	Description	Ordering Code	Finish	Weight	MRP (INR)
XL-C 7217	JS Wooden Self Closing Accessories With Door Motion	9136117	Aluminium Anodized	80 kgs	11,450.00
XL-C 7218	JS Wooden Self Closing Accessories With Door Motion	9136118	Aluminium Anodized	120 kgs	14,665.00
XL-C 7219	JS Glass Self Closing Accessories With Door Motion	9136119	Aluminium Anodized	80 kgs	22,640.00
XL-C 7220	JS Glass Self Closing Accessories With Door Motion	9136120	Aluminium Anodized	120 kgs	24,865.00

*Tracks to be ordered separately



XL-C 7217



XL-C 7218



XL-C 7219



XL-C 7220



Dormotions

Dormotion is generally used for soft closing and soft opening, it controls the speed of the complete sliding system.

Model Number	Description	Ordering Code	Weight	MRP (INR)
XL-C 7161	Single Door Motion Wooden/Glass 50kg	9137282	50 kgs	3,935.00
XL-C 7162	Single Door Motion Wooden/Glass 80kg	9137283	80 kgs	4,335.00
XL-C 7163	Single Door Motion Wooden/Glass 120kg	9137284	120 kgs	5,900.00
XL-C 7164	Double Door Motion Wooden/Glass 50kg	9137285	50 kgs	7,305.00
XL-C 7165	Double Door Motion Wooden/Glass 80kg	9137286	80 kgs	7,305.00
XL-C 7166	Double Door Motion Wooden/Glass 120kg	9137287	120 kgs	10,765.00



XL-C 7161 / XL-C 7162



XL-C 7163



XL-C 7164 / XL-C 7165



XL-C 7166

Tracks and Pelmet cover

Justo Track without fixed panels is designed for Sliding Door panels of various thicknesses and different panels like glass, wood, etc., and has the option of mounting in a wall or ceiling.

Model Number	Description	Ordering Code	Finish	Weight	MRP (INR)
XL-C 7221	JS Aluminium Track Silver Anodized-2M	9136121	Al Anodized	50/80 kgs	4,645.00
XL-C 7222	JS Aluminium Track Silver Anodized-3M	9136122	Al Anodized	50/80 kgs	6,965.00
XL-C 7223	JS Aluminium Track Silver Anodized-4M	9136123	Al Anodized	50/80 kgs	9,280.00
XL-C 7224	JS Aluminium Track Silver Anodized-2M	9136124	Al Anodized	120 kgs	4,810.00
XL-C 7225	JS Aluminium Track Silver Anodized-3M	9136125	Al Anodized	120 kgs	7,205.00
XL-C 7226	JS Aluminium Track Silver Anodized-4M	9136126	Al Anodized	120 kgs	9,610.00
XL-C 7227	JS Silver Anodized Pelmet Track-2M	9136127	Al Anodized	50/80/120 kgs	5,750.00
XL-C 7228	JS Silver Anodized Pelmet Track-3M	9136128	Al Anodized	50/80/120 kgs	8,620.00
XL-C 7229	JS Silver Anodized Pelmet Track-4M	9136129	Al Anodized	50/80/120 kgs	11,490.00
XL-C 7230	JS Silver Anodized Pelmet Cover-2M	9136130	Al Anodized	50/80/120 kgs	5,530.00
XL-C 7231	JS Silver Anodized Pelmet Cover-3M	9136131	Al Anodized	50/80/120 kgs	8,290.00
XL-C 7232	JS Silver Anodized Pelmet Cover-4M	9136132	Al Anodized	50/80/120 kgs	11,055.00



XL-C 7221, XL-C 7222, XL-C 7223



XL-C 7224, XL-C 7225, XL-C 7226



XL-C 7227, XL-C 7228, XL-C 7229



XL-C 7230, XL-C 7231, XL-C 7232

Spares

Justo Sliding system parts individually allows to customize the packages as per the system requirement.

Model Number	Description	Ordering Code	MRP (INR)
XL-C 7251	JS 120 Kg Roller Pair	9137064	2,655.00
XL-C 7252	JS 80 Kg Roller Pair	9137065	2,370.00
XL-C 7253	JS 50/80kg F1 Glass Clamp Small	9137066	2,080.00
XL-C 7254	JS 120kg F2 Glass Clamp Big	9137067	3,175.00
XL-C 7255	JS Toothed Belt 6 mm 3 mtrs	9137068	3,235.00
XL-C 7256	JS Toothed Bel 6 mm 13 mtrs	9137069	12,920.00
XL-C 7257	JS Self Closing Rope 3 mm 3 mtrs	9137070	490.00
XL-C 7258	JS Self Closing Rope 4 mm 3 mtrs	9137071	600.00
XL-C 7259	JS Self Closing Rope 4.5 mm 3 mtrs	9137072	660.00
XL-C 7260	JS Self Closer Rope Guide	9137073	105.00
XL-C 7261	JS Self Closer Rope Wheel	9137074	410.00
XL-C 7262	JS 50/80/120kg Retaining Stoper	9137075	645.00

Spares

Model Number	Description	Ordering Code	MRP (INR)
XL-C 7263	JS Dormition Stopper	9137076	300.00
XL-C 7264	JS 50-120kg Tele. Plain Stopper	9137077	165.00
XL-C 7265	JS 50/80kg F1 Glass Clamp Cover	9137078	460.00
XL-C 7266	JS 120kg F2 Glass Clamp Cover	9137079	870.00
XL-C 7267	JS Glass Clamp End Cover 10 mm	9137080	870.00
XL-C 7268	JS Glass Clamp End Cover 12 mm	9137081	870.00
XL-C 7269	JS Glass Clamp Cover 3 mtrs	9137082	6,500.00
XL-C 7270	JS Wall Bracket	9137083	435.00
XL-C 7273	JS 60-120kg Wd Conceal Bracket	9137086	2,120.00
XL-C 7274	JS 60-120kg Wd Mortise Bracket	9137087	2,140.00
XL-C 7275	JS 50/80/120kg Wood L Bracket	9137088	1,645.00

Folding Sliding System

Folding Sliding Wall (FSW)

According to your specific needs, AIDO XL-C's adaptable glass walls offer the perfect option for connecting or dividing rooms. The FSW Folding Sliding Walls are a good substitute for HSW-G systems because they are nearly identical in terms of technology and aesthetics.

Model Number	Description	Max. Height	Max Width Panel	Max Weight Sliding Panel	Parking Panels	MRP (INR)
XL-C 7017	Folding Sliding Wall (G) Glass	3000 mm	1000 mm	70 kg	G type	-
XL-C 7017	Folding Sliding Wall (G) Wood	2700 mm	750 mm	50 kg	G type	-
XL-C 7017	Folding Sliding Wall (C) Glass	3000 mm	1000 mm	70 kg	C type	-
XL-C 7017	Folding Sliding Wall (C) Wood	2700 mm	750 mm	50 kg	C type	-

* Product on RFQ basis

XL-C 7017 Folding Sliding Wall (G,C) Glass - 10 mm / 12 mm glass thickness, Floor mount locking using EPC / FB
Can be integrated using LM / clear profile / rubber seal, brush seals on top

XL-C 7017 Folding Sliding Wall (G,C) Wood - Minimum wood thickness 50 mm, EPC lock 60 mm, brush seals on top

Optional seals :

Clipping on glass - 1. LM Profile
2. Neoprene seal

Bottom seal - 1. Rubber seal



XL-C 7017

Horizontal Sliding System

Horizontal Sliding Wall (HSW)

Systems with horizontal sliding panels allow for inventiveness. The specific context for each project will depend on the job, the application, and the desired indoor climate. A specific benefit of shop fronts is the extensive transparency, which lessens the visible distinction between the interior and exterior. Additionally, the sliding panels allow for barrier-free openness if necessary.

Model Number	Description	Max Height	Max Width Panel	Max weight Sliding Panel & Swing Door	MRP (INR)
XL-C 7016	Horizontal Sliding Wall (Glass)	4000 mm	1250 mm	150 kg	-
XL-C 7016	Horizontal Sliding Wall (Wood)	3000 mm	1000 mm	100 kg	-

The dimensions mentioned above are applicable for parallel and perpendicular parking

XL-C 7016 (Glass), XL-C 7016 (Wood) - Brush seals on top, can be integrated with floor spring, parking panels using various options

XL-C 7016 (Glass) - 10 mm / 12 mm glass thickness, face fixed lock / EPC / interlocking bolt, can be integrated using LM profile / neoprene seal / line profile / rubber seal

XL-C 7016 (Wood) - Minimum wood thickness 50 mm, EPC lock 60 mm

XL-C 7016 (Glass) optional seals :

Clipping on glass - 1. LM profile

2. Neoprene seal

Fixing on Rail - 1. Line profile

Bottom Seal - 1. Rubber seal

Zero Parking	XL-C 7016 (Glass)	XL-C 7016 (Wood)
Max Height	2400 mm	2400
Max Width Panel	1000 mm	1000 mm
Max Weight Sliding panel	70 kg	70 kg



XL-C 7016

Fixed Frame Fittings

Wall Connecting Profiles (WCP)

Wall connecting profiles can be used for side lights as fixed partitions and also as secure fixing for over panels to create glass assemblies. A slim profile available with clamps ensures you have the option of secure fixing to walls, floors, or ceilings. These are load-bearing profiles for 10 & 12mm toughened glass

Model Number	Description	Ordering Code	Finish	Glass Thickness	MRP (INR)
XL-C 4023A	WCP 3 Meters - Non Safety Type	9137874	Aluminium Silver	10 mm	8,050.00
XL-C 4025A	WCP 3 Meters - Non Safety Type	9137876	Aluminium Silver	12 mm	9,805.00
XL-C 4024A	WCP 3 Meters - Safety Type	9137875	Aluminium Silver	10 mm	8,880.00
XL-C 4026A	WCP 3 Meters - Safety Type	9137877	Aluminium Silver	12 mm	10,680.00



AD 30 Fixed Glass Profiles

AD30 Fixed Profiles with cover clips are designed for connecting the fixed glass panels with wall, ceiling, and floor level by both side gaskets to the profiles. AIDO FP Profile provides a clean and elegant look to the partitions. The package consists of an FP profile, gaskets, and screws, options with glass-to-glass H profiles and stick-on profiles.

Model Number	Description	Ordering Code	Finish	MRP (INR)
XL-C 5201	AD30 Fixed Glass Profile 27 x30 mm For 10 mm TSG	9139100	Aluminium Anodized	4,880.00
XL-C 5202	AD30 Fixed Glass Profile 27 x30 mm For 12 mm TSG	9139101	Aluminium Anodized	4,880.00
XL-C 5203	AD30 Fixed Glass Profile 27 x30 mm For 10 mm TSG	9139102	Black Anodized	5,065.00
XL-C 5204	AD30 Fixed Glass Profile 27 x30 mm For 12 mm TSG	9139103	Black Anodized	5,065.00
XL-C 5208	AD30 Glass to Glass H Al Profile For 10 mm TSG	9139107	Aluminium Anodized	1,445.00
XL-C 5209	AD30 Glass to Glass H Al Profile for 10 mm	9139108	Black Anodized	1,480.00
XL-C 5210	AD30 Glass to Glass H Al Profile for 12 mm	9139109	Aluminium Anodized	1,510.00
XL-C 5211	AD30 Glass to Glass H Al Profile For 12 mm TSG	9139110	Black Anodized	1,545.00
XL-C 5212	AD30 Stick on Profile 2 x 25 mm For Grid Design Look	9139111	Aluminium Anodized	1,090.00
XL-C 5213	AD30 Stick on Profile 2 x 25 mm For Grid Design Look	9139112	Black Anodized	1,130.00

Stock length - 3000 mm, Max height - 2800 mm.



Glass Door Accessories

Glass Accessories are distinguished by their exquisite design, clean lines and rounded corners, premium materials, and meticulous construction. The fittings do not use the base body and cap's visible connections as a design element and have high versatility of adjustment.

The center lock can be suitable for swing and sliding door applications without any glass cutouts or holes having single and double hook bolt options.

Model Number	Description	Ordering Code	Finish	Glass Thickness	MRP (INR)
XL-C 7018	Circular Flush Pull Satin Finish	9138056	Satin	10 mm	2,420.00
XL-C 7019	Hook Lock for Glass Sliding Glass to Wall Or Wood	9138057	Satin	10 mm	18,870.00
XL-C 7021	Hook Lock For Glass Sliding Glass To Glass With Strike box	9138059	Satin	10 mm	24,970.00
XL-C 7058	Centre Lock 2S 1CK With Strike Box	9137308	SS Matt	10/12 mm	3,745.00
XL-C 7059	Centre Lock 2S 1CK With Strike Plate	9137309	SS Matt	10/12 mm	2,995.00
XL-C 7060	Centre Lock 1S 1C With Strike Box	9137310	SS Matt	10/12 mm	2,890.00
XL-C 7061	Centre Lock 1S 1C With Strike Plate	9137311	SS Matt	10/12 mm	2,355.00



XL-C 7018



XL-C 7019



XL-C 7021



XL-C 7058



XL-C 7059



XL-C 7060



Automatics

The automatic doors installed in buildings serve a number of purposes: they provide convenience, secure entrances, control pedestrian traffic, and restrict access to sensitive sections. Additionally, since the doors close securely, they can aid in energy conservation of the building.

AIDO XL-C's automatic door systems are distinguished by their style, diversity, safety, and comfort.

Automatic Sliding Door

Automatic Sliding Door - Entry Package

The Automatic Sliding Door for ENTRY Package includes motion sensor and light barrier as standard safety feature.

Model Number	Description	Ordering Code	Clear Door Opening Width	Maximum Weight Of door	MRP (INR)
XL-C 4125	Automatic Double Sliding Entry Operator For Frameless Glass Door	9100927	1000 - 2000 mm	2 X 80 Kgs	1,36,630.00
XL-C 4128	Automatic Single Sliding Entry Operator For Frameless Glass Door	9100942	Max. 1000 mm	1X 90 Kgs	1,13,150.00
XL-C 4126	Automatic Double Sliding Entry Operator For Wooden / Framed door	9100943	1000 - 2000 mm	2 X 80 Kgs	1,36,630.00
XL-C 4129	Automatic Single Sliding Entry Operator For Wooden / Framed door	9100944	Max. 1000 mm	1X 90 Kgs	1,13,150.00
XL-C 4127	Automatic Double Sliding Entry Operator Glass Mounted For Frameless Glass Door	9100992	1000 - 2000 mm	2 X 80 Kgs	1,79,105.00
XL-C 4130	Automatic Single Sliding Entry Operator Glass Mounted For Frameless Glass Door	9100993	Max. 1000 mm	1X 90 Kgs	1,48,190.00

Finish: Silver Anodized

Maximum clear door opening height: 2700 mm subjected to maximum door weight as per specification



Automatic Double Sliding

Automatic Sliding Door - Mid Package

The Automatic Sliding Door for MID Package includes motion sensor with inbuilt presence sensor as additional safety feature

Model Number	Description	Ordering Code	Clear Door Opening Width	Maximum Weight Of door	MRP (INR)
XL-C 4131	Automatic Double Sliding MID Operator For Frameless Glass Door With Zensafe combo Radar without lock	9101025	1000 - 2000 mm	2 X 80 Kgs	1,59,070.00
XL-C 4132	Automatic Single Sliding MID Operator For Frameless Glass Door With Zensafe combo Radar without lock	9101020	Max. 1000 mm	1 X 90 Kgs	1,37,280.00
XL-C 4133	Automatic Double Sliding MID Operator For Wooden / Framed door	9101021	1000 - 2000 mm	2 X 80 Kgs	1,59,070.00
XL-C 4134	Automatic Single Sliding MID Operator For Wooden / Framed door	9101022	Max. 1000 mm	1 X 90 Kgs	1,37,280.00
XL-C 4135	Automatic Double Sliding MID Operator Glass Door Mounted For Frameless Glass Door	9101023	1000 - 2000 mm	2 X 80 Kgs	2,00,475.00
XL-C 4136	Automatic Single Sliding MID Operator Glass Door Mounted For Frameless Glass Door	9101024	Max. 1000 mm	1 X 90 Kgs	1,72,145.00

Finish: Silver Anodized

Maximum clear door opening height: 2700 mm subjected to maximum door weight as per specification



Automatic Single Sliding

Automatic Sliding - Plus Package

The Automatic Sliding Door for PLUS Package includes motion sensor with inbuilt presence sensor as additional safety features with lock and optional battery pack.

Model Number	Description	Ordering Code	Clear Door Opening Width	Maximum Weight Of door	MRP (INR)
XL-C 4150	Automatic Double Sliding - PLUS Operator For Frameless Glass Door	9100949	1000 - 2000 mm	2 X 80 Kgs	1,88,970.00
XL-C 4156	Automatic Single Sliding - PLUS Operator For Frameless Glass Door	9100945	Max. 1000 mm	1 X 90 Kgs	1,66,740.00
XL-C 4153	Automatic Double Sliding - PLUS Operator For Frameless Glass Door Without Radar	9100950	1000 - 2000 mm	2 X 80 Kgs	1,68,960.00
XL-C 4159	Automatic Single Sliding - PLUS Operator For Frameless Glass Door Without Radar	9100946	Max. 1000 mm	1 X 90 Kgs	1,46,730.00
XL-C 4151	Automatic Double Sliding - PLUS Operator For Wooden / Framed door	9100951	1000 - 2000 mm	2 X 80 Kgs	1,88,970.00
XL-C 4157	Automatic Single Sliding - PLUS Operator For Wooden / Framed door	9100947	Max. 1000 mm	1 X 90 Kgs	1,66,740.00

Finish: Silver Anodized

Maximum clear door opening height: 2700 mm subjected to maximum door weight as per specification



Automatic Single Sliding

Automatic Sliding - Plus Package

Model Number	Description	Ordering Code	Clear Door Opening Width	Maximum Weight Of door	MDP (INR)
XL-C 4154	Automatic Double Sliding - PLUS Operator For Wooden / Framed door Without Radar	9100952	1000 - 2000 mm	2 X 80 Kgs	1,68,960.00
XL-C 4160	Automatic Single Sliding - PLUS Operator For Wooden / Framed door Without Radar	9100948	Max. 1000 mm	1 X 90 Kgs	1,46,730.00
XL-C 4152	Automatic Double Sliding - PLUS Operator Glass Door Mounted For Frameless Glass Door With Glass Manets	9100994	1000 - 2000 mm	2 X 80 Kgs	2,30,070.00
XL-C 4158	Automatic Single Sliding - PLUS Operator Glass Door Mounted For Frameless Glass Door With Glass Manets	9100995	Max. 1000 mm	1 X 90 Kgs	2,00,145.00
XL-C 4155	Automatic Double Sliding - PLUS Operator Glass Door Mounted without Radar For Frameless Glass Door With Glass Manets	9100996	1000 - 2000 mm	2 X 80 Kgs	2,10,060.00
XL-C 4161	Automatic Single Sliding - PLUS Operator Glass Door Mounted Without Radar For Frameless Glass Door With Glass Manets	9100997	Max. 1000 mm	1 X 90 Kgs	1,80,140.00

Finish: Silver Anodized

Maximum clear door opening height: 2700 mm subjected to maximum door weight as per specification



Automatic Double Sliding

Automatic Sliding Door Package- 5 m

Model Number	Description	Ordering Code	Clear Door Opening Width	Maximum Weight Of door	MRP (INR)
XL-C 4193	Automatic Double Sliding MID Operator For Frameless Glass Door 5.2 m	9100285	1000 - 2500 mm	2 X 80 Kgs	2,00,980.00
XL-C 4194	Automatic Double Sliding MID Operator Glass Mounted For Frameless Glass Door 5.2 m	9100286	1000 - 2500 mm	2 X 80 Kgs	2,65,435.00
XL-C 4195	Automatic Double Sliding PLUS Operator For Frameless Glass Door 5.2 m	9100287	1000 - 2500 mm	2 X 80 Kgs	2,37,220.00
XL-C 4196	Automatic Double Sliding PLUS Operator Glass Mounted For Frameless Glass Door 5.2 m	9100288	1000 - 2500 mm	2 X 80 Kgs	2,99,615.00

Finish: Silver Anodized

Maximum clear door opening height: 2500 mm subjected to maximum door weight as per specification



Automatic Double Sliding

Framed Sliding Door

Glide Guard Door Frames

Introducing Glide Guard Door (GGD) Frames designed for automatic sliding door with sleek profiles for a modern appearance. With a sturdy and contemporary design, these frames seamlessly combine style and high functionality, perfectly compatible with 10 mm thick glass panels.

Model Number	Description	Ordering Code	Clear Door Opening Width	Max Clear Door Opening Height*	Maximum Weight Of Sliding Door door	MRP (INR)
XL-C 4137	GGD Frames 10 mm Thick Glass For 1 Moving Panel	9102024	1000 - 2000 mm	2500 mm	1 X 90 Kgs	22,420.00
XL-C 4138	GGD Frames 10 mm Thick Glass For 2 Moving Panel	9102025	1000 - 2000 mm	2500 mm	2 X 80 Kgs	40,760.00
XL-C 4139	GGD Frames 10 mm Thick Glass For 1 Moving Panel - 1 Fixed Panel	9102026	1000 - 2000 mm	2500 mm	1 X 90 Kgs	38,725.00
XL-C 4140	GGD Frames 10 mm Thick Glass For 2 Moving Panel - 2 Fixed Panel	9102027	1000 - 2000 mm	2500 mm	2x 80 Kgs	75,405.00
XL-C 4144*	GGD Frames 10mm Glass For 2 Moving 4 Fixed Panels	9102028	1000 - 2000 mm	2500 mm	2x 80 kgs	113,110.00

Automatics

Finish: Silver Anodized

*Subject to maximum door weight as per specification



Accessories

Automatic door systems are designed for maximum safety. Our radar motion detector, for instance, delays the closing cycle as long as someone is located in the access area. All our accessories have three goals: safety, efficiency and customer satisfaction! Browse through our range to find what suits you best.

Model Number	Description	Ordering Code	MRP (INR)
XL-C 4102A	Radar	9101328	7,925.00
XL-C 4103A	Push Button	9101329	7,885.00
XL-C 4104	Hand held Transmitter/Receiver	9101339	23,605.00
XL-C 4105A	Brush Seal Profile	9101341	7,050.00
XL-C 4115	Special Manet Fixed - 12 mm Glass	9101290	2,005.00
XL-C 4116	Special Manet Flexible - 12 mm Glass	9101291	5,115.00
XL-C 4121	RC Transmitter	9100147	8,600.00
XL-C 4122	RC Receiver	9100148	14,315.00
XL-C 4189	Wave switch	9100988	13,020.00
XL-C 4197	Combi Sensor	9101041	24,235.00



XL-C 4102A



XL-C 4105A



XL-C 4115



XL-C 4116

Spare Parts

If any unforeseen situation arises due to external factors, the mechanical, electrical and electronics spare parts listed here can be replaced without any hassle and makes the automatic operator in continuous performance.

Model Number	Description	Ordering Code	MRP (INR)
XL-C 4106	Control unit assembly	9101281	48,335.00
XL -C 4107	Motor Assembly for 4100	9101282	51,190.00
XL-C 4108	Torroidal Transformer	9101283	8,420.00
XL-C 4111	Encoder Cable 450mm	9101286	4,575.00
XL-C 4112	Five Position Program Switch	9101287	2,035.00

Automatics



XL-C 4106



XL-C 4107



XL-C 4108



XL-C 4111



XL-C 4112

Spare Parts

Model Number	Description	Ordering Code	MRP (INR)
XL-C 4113	Light Barrier for 4100	9101288	7,930.00
XL-C 4171	Automatic Sliding Door Motor	9100973	31,485.00
XL-C 4172	Smgs- Control Module	9100974	15,745.00
XL-C 4173	Remote Control	9100975	4,900.00
XL-C 4174	Radar with Black Cable	9100976	8,605.00
XL-C 4176	Main Switch KIT	9100978	2,800.00



XL-C 4113



XL-C 4171



XL-C 4173



XL-C 4174

Spare Parts

Model Number	Description	Ordering Code	MRP (INR)
XL-C 4177	Carrier Clamp Roller Set	9100979	8,400.00
XL-C 4180	End stop	9100982	525.00
XL-C 4181	Mid stop	9100983	525.00
XL-C 4183	Return Pulley	9100985	2,100.00
XL-C 4184	EM Lock (9100987 must be used to activate lock function)	9100986	37,400.00
XL-C 4185	EM Lock/Battery Activator	9100987	14,670.00
XL-C 4191	Back Plate 4150 MM	9100991	19,195.00



XL-C 4177



XL-C 4180



XL-C 4183



XL-C 4184



Spiders & Balustrades

Grand Entrances at commercial or residential fronts always requires Frameless Glazing with Mullion Free Effect AIDO-XL-C's Spider Glazing Fittings make this possible. With our products, you can also opt for an Entrance system with Automatic Sliding door and Frameless swing glass door integrations. Frameless canopies above entrance doors or walkway canopies can all be turned into realities with AIDO-XL-C.

Non-Fin Type Spider Fittings

The AIDO Non-fin type spider fittings are used to support the Façade glass and canopy glass, connected to Sub Steel structures. Non-fin type Spider fitting arm CTC - 200mm. It is compatible with fixed and articulated bolts. All Spider fittings are SS 316 Grade and are available in polished stainless steel & satin stainless-steel finishes.

Model Number	Description	Ordering Code	Surface Finish	Material Grade	MRP (INR)
XL-C 6026	Single arm Non Fin Type Spider	9140777	SS Electro Polished	SS 316	4,395.00
XL-C 6027	Two arm 180° Non Fin Type Spider	9140778	SS Electro Polished	SS 316	5,500.00
XL-C 6028	Two arm 90° Non Fin Type Spider	9140779	SS Electro Polished	SS 316	6,525.00
XL-C 6029	Four arm Non Fin Type Spider	9140780	SS Electro Polished	SS 316	9,225.00

Maximum Façade Glass Thickness : 15mm

This fitting is recommended for a height up to 6000 mm only. For technical queries if any, please contact our technical support team



XL-C 6026



XL-C 6027



XL-C 6028



XL-C 6029



Fin Type Spider Fittings

The AIDO Fin type spider fittings have an attractive elliptical arm design. These fittings help connect the facade glass panels to a glass fin suspended from beam or slab by means of Fin brackets. Fin type Spider fitting arm CTC - 200mm. It is compatible with fixed and articulated bolts. All Spider fittings are SS 316 Grade and are available in polished stainless steel & satin stainless-steel finishes.

Model Number	Description	Ordering Code	Surface Finish	Material Grade	MRP (INR)
XL-C 6030	Single arm Fin Type Spider	9140764	SS Electro Polished	SS 316	4,315.00
XL-C 6031	Two arm 90° Fin Type Spider	9140765	SS Electro Polished	SS 316	6,525.00
XL-C 6032	Two arm 180° Fin Type Spider	9140766	SS Electro Polished	SS 316	7,935.00
XL-C 6033	Four arm Fin Type Spider	9140767	SS Electro Polished	SS 316	11,085.00

Maximum Facade Glass Thickness : 15mm

XL-C 6032, XL-C 6033 Maximum Fin Glass thickness 21.52mm

XL-C 6030, XL-C 6031 Application Facade Glass to wall

XL-C 6032, XL-C 6033 Application Fin Glass to Facade Glass



XL-C 6030



XL-C 6031



XL-C 6032



XL-C 6033

This fitting is recommended for a height up to 6000 mm only. For technical queries if any, please contact our technical support team

Splice plate & Facade bolts

The AIDO XL-C Splice Plate are designed to connect the two glass fins with four bolts design.

Model Number	Description	Ordering Code	Surface Finish	Material Grade	MRP (INR)
XL-C 6034	Splice Plate	9140770	SS Polished	SS 316	17,150.00
XL-C 6035	Fixed Bolt	9140771	SS Polished	SS 316	1,610.00
XL-C 6036	Articulated Bolt	9140772	SS Polished	SS 316	3,850.00
XL-C 6041*	Spider NF Connector Bush	9141450	Setin	SS 304	2,495.00

Maximum Facade Glass Thickness - 15mm

XL-C 6034 - Size 300 mm x 50 mm x 8 mm, Maximum Fin Width 400 mm.

Maximum Fin Glass Thickness - 21.52mm



XL-C 6034



XL-C 6035



XL-C 6036

This fitting is recommended for a height up to 6000 mm only. For technical queries if any, please contact our technical support team

Facade Bracket & Fin Glass Suspension Brackets

Model Number	Description	Ordering Code	Size	Maximum Glass Thickness	MRP (INR)
XL-C 6037	Facade Bracket	9140768	150 mm x 100 mm x 8 mm (Pair)	15 mm	8,525.00
XL-C 6038	Fin Bracket	9140769	350 mm x 100 mm x 10 mm (Pair)	21.52mm	18,935.00
XL-C 6039	Fin Bracket	9140013	300 mm x 100 mm x 8 mm (Pair)	21.52mm	12,255.00
XL-C 6040	Fin Bracket	9140014	400 mm x 100 mm x 8 mm (Pair)	21.52mm	15,970.00

Finish : NiCr Plated
Material Grade : MS/NiCr



XL-C 6037



XL-C 6038



XL-C 6039



XL-C 6040

This fitting is recommended for a height up to 6000 mm only. For technical queries if any, please contact our technical support team

K30 Non-Fin Type Spider fitting series

Model Number	Description	Ordering Code	Surface Finish	Material Grade	MRP (INR)
XL-C 6126	Single arm Non Fin Type K30 Series	9141063	SS Polished	SS 316	1,555.00
XL-C 6127	Two Arm 180° Non Fin Type K30 Series	9141064	SS Polished	SS 316	2,540.00
XL-C 6128	Non Fin Type K30 Series	9141087	SS Polished	SS 316	2,540.00
XL-C 6129	Four Arm Non Fin Type K30 Series	9141065	SS Polished	SS 316	4,815.00



XL-C 6126



XL-C 6127



XL-C 6128



XL-C 6129



K30 Fin Type Spider fitting series

Model Number	Description	Ordering Code	Surface Finish	Material Grade	MRP (INR)
XL-C 6130	Single Arm Fin Type K30 Series	9141067	SS Polished	SS 316	2,090.00
XL-C 6131	Two Arm 90° Fin Type K30 Series	9141068	SS Polished	SS 316	3,150.00
XL-C 6132	Two Arm 180° Fin Type	9141069	SS Polished	SS 316	5,115.00
XL-C 6133	Four Arm Fin Type K30 Series	9141070	SS Polished	SS 316	7,130.00
XL-C 6135	Fixed Bolt K30 Series	9140185	SS Polished	SS 316	1,370.00
XL-C 6135B	Fixed Bolt K30 Series	9140198	SS Polished	SS 316	980.00
XL-C 6136	Articulated Bolt K30 Series	9140186	SS Polished	SS 316	3,215.00

Maximum Facade Glass Thickness : 15mm

Maximum Fin Glass Thickness - 21.52mm

XL-C 6130, XL-C 6131 Application Facade Glass To Wall

XL-C 6132, XL-C 6133 Application Facade Glass To Fin Glass



XL-C 6130



XL-C 6131



XL-C 6132



XL-C 6133



XL-C 6135



XL-C 6135B



XL-C 6136

This fitting is recommended for a height up to 6000 mm only. For technical queries if any, please contact our technical support team

Canopy Fittings

The AIDO Series frameless Glass Canopy system fittings are engineered to seamlessly integrate all-glass doors with the canopy glass designs. This canopy glass can be adjusted at an angle for free fall of rainwater. Applications can be mounted to a glass façade and RCC Wall too. All Canopy fittings are SS 316 Grade and are available in polished stainless steel & satin stainless-steel finishes.

Model Number	Description	Ordering Code	Surface Finish	Material Grade	MRP (INR)
XL-C 9143	Single Point Canopy Glass to Glass with Accessories	9140062	SS Polished	SS316	11,695.00
XL-C 9144	Single Point Canopy Glass to Wall with accessories	9140063	SS Polished	SS316	11,695.00
XL-C 9149	Double Point Canopy Glass to Wall With Accessories	9141199	SS Polished	SS316	23,990.00

Only Toughened Laminated glass to be used for canopy glass
 Maximum Canopy Glass Thickness : 13.52 mm
 Maximum Canopy Glass Panel Size : 1400mm x1400mm



XL-C 9143



XL-C 9144



This fitting is recommended for a height up to 6000 mm only. For technical queries if any, please contact our technical support team

Balustrade

A complete line of product range is available to accommodate virtually any baluster configuration and fit almost any commercial or residential building application. Load capacity and aesthetic appeal will complement your construction plans. The components are easily assembled with mechanical fasteners at intersections and with gripping and structural adhesives at joints.

Our expert team provide assistance in analysing and preparing the right mounting design of handrails so that the finished structure can withstand a specific load capacity.

Model Number	Description	Ordering Code	Surface Finish	Material Grade	MRP (INR)
XL-C 9200	Fixed wall bracket - 38 mm	9141196	SS Polished	SS 316	2,980.00
XL-C 9201	Glass mount rail bracket curve	9180816	SS Polished	SS 316	2,650.00
XL-C 9202	Wall mount rail bracket curve	9180817	SS Polished	SS 316	2,345.00
XL-C 9203	Top Adaptor Neck Type for pipe	9180792	SS Satin	SS 304	2,980.00
XL-C 9204	Top Adaptor Neck Type for Flat	9180793	SS Satin	SS 304	2,200.00
XL-C 9205	Glass Link Two Way for Pipe	9180794	SS Satin	SS 304	2,710.00
XL-C 9206	Glass Link Two way for Flat	9180795	SS Satin	SS 304	3,045.00
XL-C 9207	Glass Link Two way for Box	9180796	SS Satin	SS 304	2,285.00

Balustrade components are suitable for 50.8 mm Dia & 1.6 mm Thick Pipe, 60 x 10 mm Flat & 54 x 12 mm Flat, Box structures.



XL-C 9200



XL-C 9201



XL-C 9202



XL-C 9203



XL-C 9204



XL-C 9205



XL-C 9206



XL-C 9207

Balustrade

Model Number	Description	Ordering Code	Surface Finish	Material Grade	MRP (INR)
XL-C 9210	Offset Rod Holder for Pipe	9180797	SS Satin	SS 304	1,250.00
XL-C 9211	Rod Holder for Flat	9180798	SS Satin	SS 304	1,575.00
XL-C 9212	Rod Holder for Box	9180799	SS Satin	SS 304	825.00
XL-C 9213	Inline rod Holder for Pipe	9180800	SS Satin	SS 304	1,435.00
XL-C 9214	Inline rod Holder for Box	9180801	SS Satin	SS 304	795.00
XL-C 9215	Articulated Rod Holder	9180802	SS Satin	SS 304	1,630.00
XL-C 9216	Universal Elbow	9180803	SS Satin	SS 304	8,140.00
XL-C 9217	Mid sleeve Short	9180804	SS Satin	SS 304	2,040.00



XL-C 9210



XL-C 9211



XL-C 9212



XL-C 9215



XL-C 9216



XL-C 9217

Balustrade

Model Number	Description	Ordering Code	Surface Finish	Material Grade	MRP (INR)
XL-C 9218	End cap for dia 50.8mm	9180805	SS Satin	SS 304	1,535.00
XL-C 9220	Offset handrail bracket for Pipe	9180806	SS Satin	SS 304	2,340.00
XL-C 9221	Offset handrail bracket for Flat	9180807	SS Satin	SS 304	2,760.00
XL-C 9222	Offset handrail bracket for Box	9180808	SS Satin	SS 304	1,995.00
XL-C 9223	Glass mounted Handrail bracket	9180809	SS Satin	SS 304	2,145.00
XL-C 9224	Wall mounted	9180810	SS Satin	SS 304	3,785.00



XL-C 9218



XL-C 9220



XL-C 9221



XL-C 9222



XL-C 9223



XL-C 9224

Balustrade

Model Number	Description	Ordering Code	Surface Finish	Material Grade	MRP (INR)
XL-C 9225	Adjustable wall Bracket	9180811	SS Polished	SS 316	4,215.00
XL-C 9226	D1 Spigot	9180812	SS Satin	SS 316	7,580.00
XL-C 9227	D2 Spigot without anchore fastener	9180813	SS Satin	SS 316	10,870.00
XL-C 6151	Square spigot upto 13.52mm glass	9180347	SS Polished	SS 316	6,105.00
XL-C 6152	Square spigot upto 13.52mm glass	9141198	SS Satin	SS 316	6,105.00



XL-C 9225



XL-C 9226



XL-C 9227



XL-C 6151



XL-C 6152

Frameless Glass Railing Systems

AIDO Frameless glass railing systems is a system of Continuous floor profiles with innovative wedge locking system solutions for innumerable applications. Frameless glass railing systems, opens up many opportunities for a timelessly elegant and classical design frameless glass railing systems with uninterrupted views. They are suitable both for interior and exterior applications and In order to achieve total transparency, you can combine everything with round, square handrails and have many additional advantages.

Model Number	Description	Ordering Code	Finish	MRP (Rate/Meter)
XL-C 9301	Top Rail Profile Round With Gasket - 13.52mm Glass	9141331	Silver Anodized	2,090.00
XL-C 9302	Top Rail Profile Round With Gasket - 15.52 & 17.52mm Glass	9141332	Silver Anodized	2,135.00
XL-C 9305	Bottom Rail Profile With Accessories - 13.52mm Glass	9141335	Silver Anodized	10,455.00
XL-C 9306	Bottom Rail Profile With Accessories - 15.52mm Glass	9141336	Silver Anodized	10,095.00
XL-C 9307	Bottom Rail Profile With Accessories - 17.52mm Glass	9141337	Silver Anodized	10,510.00

Note:- Standard stock lengths available - 3.0 meter

Specification

Components	Specification	Material	Surface Finish
Bottom rail profile	60 x 125 mm Aluminum U shape channel	Aluminum 6060 T6	Silver Anodized & Black Anodized
Top rail profile	50.8 mm	Aluminum 6060 T6	Silver Anodized & Black Anodized
System glass height and width Max.	1100 mm x 1100 mm	Glass	Clear, Frosted or Tinted
Glass thickness	13.52mm - 17.52mm	Glass	Clear, Frosted or Tinted
Glass type	Toughened Laminated	Glass	Clear, Frosted or Tinted
Seals	For top and bottom rail	Poly vinyl	Soft, Black



Silver Anodized

Frameless Glass Railing Systems

Model Number	Description	Ordering Code	Ordering Code	MRP (Rate/Meter)
XL-C 9351	Top Rail Profile Round With Gasket - 13.52mm Glass	9141338	Black Anodized	2,130.00
XL-C 9352	Top Rail Profile Round With Gasket - 15.52 & 17.52mm Glass	9141339	Black Anodized	2,175.00
XL-C 9355	Bottom Rail Profile With Accessories - 13.52mm Glass	9141342	Black Anodized	10,550.00
XL-C 9356	Bottom Rail Profile With Accessories - 15.52mm Glass	9141343	Black Anodized	10,190.00
XL-C 9357	Bottom Rail Profile With Accessories - 17.52mm Glass	9141344	Black Anodized	10,610.00

Specification

Components	Specification	Material	Surface Finish
Bottom rail profile	60 x 125 mm Aluminum U shape channel	Aluminum 6060 T6	Silver Anodized & Black Anodized
Top rail profile	50.8 mm	Aluminum 6060 T6	Silver Anodized & Black Anodized
System glass height and width Max.	1100 mm x 1100 mm	Glass	Clear, Frosted or Tinted
Glass thickness	13.52mm - 17.52mm	Glass	Clear, Frosted or Tinted
Glass type	Toughened Laminated	Glass	Clear, Frosted or Tinted
Seals	For top and bottom rail	Poly vinyl	Soft, Black



Black Anodized

Frameless Glass Railing Systems

AIDO Frameless glass railing systems is a system of Continuous floor profiles with innovative wedge locking system solutions for innumerable applications. Frameless glass railing systems, opens up many opportunities for a timelessly elegant and classical design frameless glass railing systems with uninterrupted views. They are suitable both for interior and exterior applications and in order to achieve total transparency, you can combine everything with round, square handrails and have many additional advantages.

Model Number	Description	Ordering Code	Finish	MRP (Rate/Meter)
XL-C 9308	Top Rail Profile Square With Gasket - 40X40X1.5MM - 13.52mm Glass	9141440	Silver Anodized	1905.00
XL-C 9309	Top Rail Profile Square With Gasket - 40X40X1.5MM - 15.5mm and 17.52mm Glass	9141441	Silver Anodized	1950.00
XL-C 9359	Top Rail Profile Square With Gasket - 40X40X1.5MM - 13.52mm Glass	9141375	Black Anodized	1940.00
XL-C 9360	Top Rail Profile Square With Gasket - 40X40X1.5MM - 15.5mm and 17.52mm	9141376	Black Anodized	1985.00

Note - Standard stock lengths available - 3.0 meter

Specification

Components	Specification	Material	Surface Finish
Top Rail Profile Square	40X40X1.5MM	Aluminum 6060 T6	Silver Anodized & Black Anodized

Frameless Glass Railing Accessories

AIDO Frameless glass railing systems is a system of Continuous floor profiles with innovative wedge locking system solutions for innumerable applications. Frameless glass railing systems, opens up many opportunities for a timelessly elegant and classical design frameless glass railing systems with uninterrupted views. They are suitable both for interior and exterior applications and In order to achieve total transparency, you can combine everything with round, square handrails and have many additional advantages.

Model Number	Description	Ordering Code	Ordering Code	MRP (Rate/Meter)
XL-C 9315	Wall Conceal TR-Square-Silver	9141389	Silver Anodized	500.00
XL-C 9316	Mid jointer TR-Square-Silver	9141390	Silver Anodized	715.00
XL-C 9317	Elbow TR-Square-Silver	9141391	Silver Anodized	795.00
XL-C 9361	Wall Conceal TR-Square-Black	9141392	Black Anodized	480.00
XL-C 9362	Mid jointer TR-Square-Black	9141393	Black Anodized	635.00
XL-C 9363	Elbow TR-Square-Black	9141394	Black Anodized	775.00
XL-C 9318	Wall conceal - Alu top rail Surface Finish Silver Anodized - 50mm - acces	9141444	Silver Anodized	545.00
XL-C 9319	Mid Connector - Alu top rail 50mm Surfacade Finish - Silver Akzonoble powder coating	9141445	Silver Anodized	605.00
XL-C 9320	Elbow 90° - Alu top rail 50mm Surfacade Finish - Silver Akzonoble powder coating	9141446	Silver Anodized	1220.00
XL-C 9321	Wall conceal Alu top rail 50mm Blk	9141447	Black Anodized	545.00
XL-C 9322	Mid Connector Alu top rail 50mm Black	9141448	Black Anodized	605.00
XL-C 9323	Elbow 90° Alu top rail 50mm Black	9141449	Black Anodized	1220.00



Digital Door Lock

Experience the future of home security with the Digital Door Lock. Offering a seamless blend of style and technology, it provides multiple access options, including fingerprints, pin codes, and cards. Enjoy the convenience of voice command integration and choose from a range of attractive finishes to match your door. Stay secure and stylish with the Digital Door Lock.



Digital Door Lock

Digital Door Lock

Model Number	Description	Ordering Code	Finish	Dimension	MRP (INR)
XL-C 4605	Mortise Digital Door Lock with Fingerprint, RFID Card, PIN Code, Mechanical Key	9202723	Black	290mm(H)* 70mm(W)* 25mm(T)*	18,499.00
XL-C 4606	Digital Door Lock with Fingerprint, RFID Card, PIN Code, Wi-Fi, Mechanical Key	9202724	Black	300mm(H)* 72mm(W)* 25mm(T)*	21,499.00
XL-C 4607	Slim Mortise Digital Door Lock with Fingerprint, RFID Card, PIN Code, BLE, Mechanical Key	9202725	Black	200mm(H)* 150mm(W)* 22mm(T)*	21,999.00
XL-C 4608	Vertical lever Digital Door Lock with Fingerprint, RFID Card, PIN Code, Wi-Fi, Mechanical Key	9202726	Black	264mm(H)* 59mm(W)* 17mm(T)*	25,999.00
XL-C 4609	Glossy Black Digital Door Lock with Fingerprint, RFID Card, PIN Code, BLE, Mechanical Key	9202727	Black	100mm(H)* 100mm(W)* 100mm(T)*	16,999.00
XL-C 4610	Digital Door Lock with Fingerprint, RFID Card, PIN Code, Wi-Fi, Mechanical Key	9202728	Black	282mm(H)* 65mm(W)* 19mm(T)*	20,499.00

NEW ARRIVAL



XL-C 4605



XL-C 4606



XL-C 4607



XL-C 4608



XL-C 4609



XL-C 4610



Logistic Center

We specialize in the safe and timely delivery of our comprehensive range of products. It is strategically located to provide maximum coverage across India, and our team of experts is dedicated to ensuring that your products are delivered on time and in perfect condition.

Our logistics process is designed to meet the specific needs of the industry. We use the latest technology to optimize our supply chain, reduce waste, and increase efficiency. Our streamlined processes ensure that your products move seamlessly through the supply chain, minimizing lead times and maximizing productivity.

Our logistic center is designed with safety in mind. We take every precaution to ensure that your products are transported and stored safely, minimizing the risk of damage or loss. Our team of experts is well-trained in handling fragile and delicate items, and we use specialized packaging and handling equipment to ensure that your products arrive at their destination in perfect condition.

Our facilities quality management system ISO 9001:2015, Environmental management system ISO 14001:2015, Occupational health & safety management system ISO 45001:2018.



Testing Facilities

At AIDO XL-C, we strive for precision and perfection in all our products and we take pride in delivering products that meet the highest standards of quality and performance. With the support of our parent company, dormakaba, we have access to a wide range of expertise and resources that allow us to stay at the forefront of innovation and technology. Our products are designed to be user-friendly, reliable, and efficient, making them a great choice for any application. Our rigorous testing and quality control processes ensure that each product we manufacture is built to last and deliver optimal performance.

Our client partners rely on us to bring quality products to market quickly and efficiently, and so can you.

Our PQS Test Laboratory has been assessed and accredited in accordance with the standard ISO/IEC 17025:2017 by NABL.

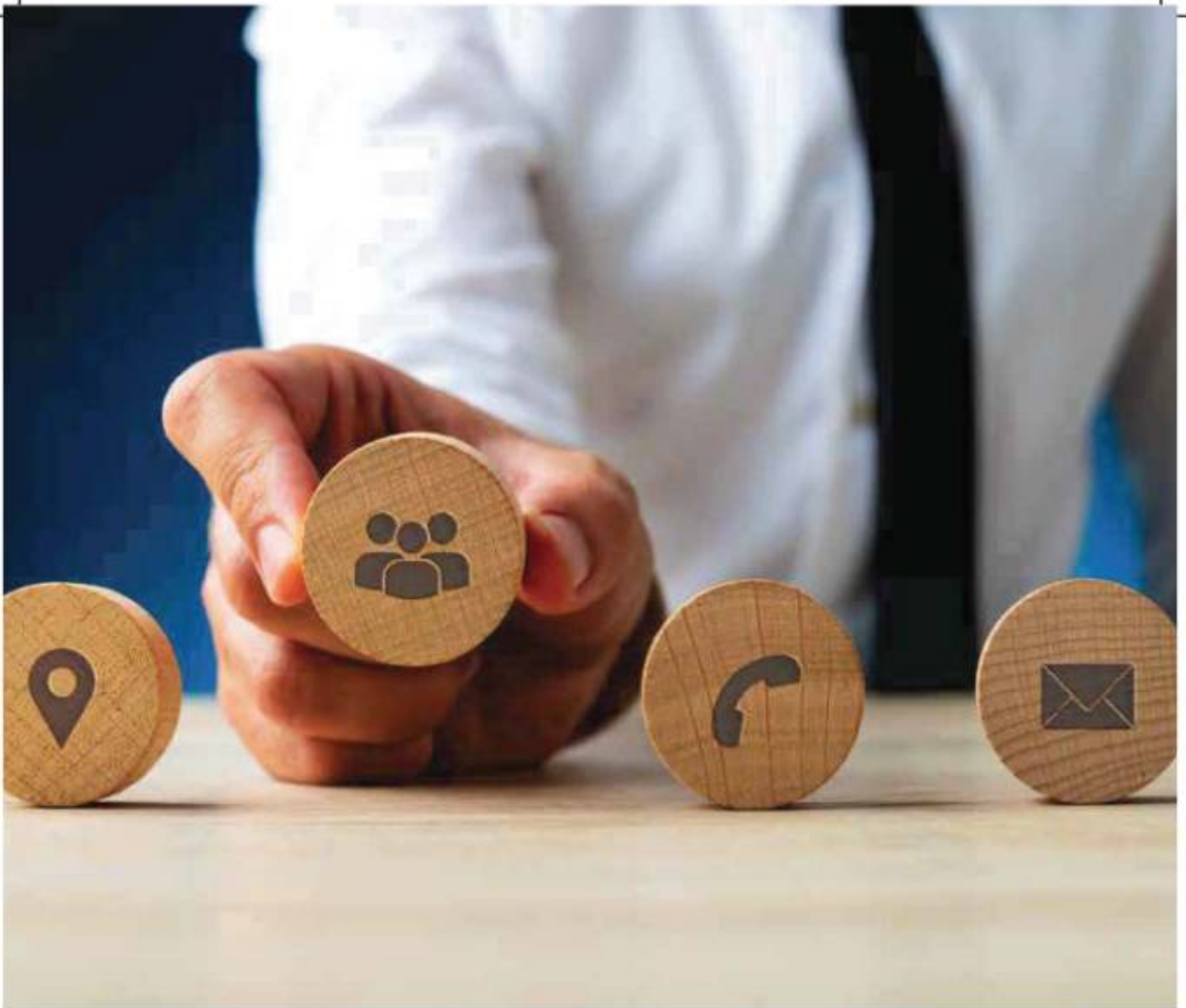


Your Trusted Partner

AIDO XL-C is a proud successor of DORMA XL-C that falls under the larger dormakaba group. In accordance with recently developed growth plans that have retail as a priority, AIDO XL-C seeks to explore new market prospects while staying true to its roots.

As an organisation dedicated to staying committed to customers and their needs, we take no shortcuts in our pursuit of the same. We exert all of our effort to deliver outcomes in this direction.

If trust, honesty, care and competence are what you look to imbibe, you can always count on AIDO-XL-C to consistently deliver that and much more!



Customer Service

"Customer first" is the motto we live by. AIDO XL-C enters the market with enough flexibility and versatility to accommodate every need and want of customers. Right from our philosophy to day-to-day activities, our thoughts and actions have one single goal-to always make customer satisfaction our priority. We are committed to ensuring the best performance in all sectors thus leaving a long lasting impact on our customers' lives, both professionally and personally.

Backed by the strong reputation of our parent company and the ideals we inherited pointing us in the correct direction, AIDO XL-C guarantees that every customer receives only the finest, every time, without any compromise. Our customers can always reach out to us on our customer service number 1-800-121-6414 and avail assistance from a strong team of 100+ service technicians who provide after sale services and consultations. email id: service.india@dormakaba.com

Our Presence

AIDO XL-C with its aggressive marketing initiatives, seeks to extend the partner networks and establish a strong presence for the brand in the retail sector. With four zonal offices, 400+ products, 100+ dealer network and 200+ cities covered, we have established a pan-India presence; right from Jammu and Kashmir to Kanyakumari.

By boldly embracing change at the right time to keep up with the changing market dynamics, we firmly believe that we will evolve into a leader in the retail sector.





dormakaba India Private Limited
Mahindra World City, Plot No. 48/3,
8th Avenue, Anjur Village
603002 Chengalpattu District, India.
Customer service number - 89399 93993
Email id: enquiry.india@dormakaba.com
www.aidoworld.com