

arteza®
BY quba GROUP

ARCHITECTURAL GLASS
HARDWARE FITTINGS



/// PRICE LIST
WR. F. 0149-0011



EPITOME OF
ELEGANCE AND
FUNCTIONALITY



quba GROUP

Qubagroup has created its reputation in the market by its aesthetics and effective architectural hardware products. The wide range of Glass Fittings, Patch Fittings, Glass Door Pull Handles, Floor Springs, Glass Hinges, Glass Locks, Glass sliding & Folding and PVC Seals of Qubagroup are not only the statement of style by its look but they are benchmarks of quality as well.

The precision in manufacturing the products and the passion to make living better and easy, motivate us to look beyond ordinary. The professional marketing and distribution channel of Qubagroup enables the company to keep the quality standards maintained in every regard.

MAKE YOUR
GLASS DO MORE





INDEX

06	Floor Springs
12	Glass Door Packages
16	Patch Fittings
28	Hydraulic Patches
32	Glass Door Pull Handles
37	Glass Sliding Handles & Looks
42	Automatic Sensor Door
46	Spider Fittings
57	Shower Hinges & Glass Connectors
72	Glass Door Knobs & Shower Knight Head Accessories
79	PVC Seals
84	Sliding System
96	Sliding Folding, Glass Door & Aluminium Tracks

Floor Springs



Floor Springs

SPECIFICATIONS

High quality, precision machined mechanism.

Internal mechanism components utilizing heat treated high grade alloy steel spring & ball bearing for optimum efficiency.

High grade cast iron body housed within a galvanized steel box.

Cover plate made of certified stainless steel grade 304.

Hydraulic oils, based on high quality and sealed rings for longer life.

Hinge mechanism totally immersed in high grade hydraulic fluid.

Built in pressure relief valve protects the closer from rough use.

Designed for smooth functioning within wide temperature ranges.

Ideal for use in any kind of door (wooden, glass, & aluminum doors)



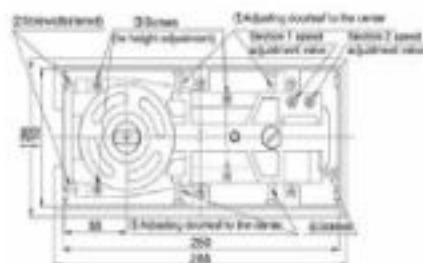
INTERNAL PARTS OF FLOOR SPRING



FLOOR HINGES SUGGESTION CHART

ITEM CODE	QFS-70 SS	QFS-80 SS	QBFS-74 SS	QFS-120 SS	QBFS - 04 SS
EN Standard/Opening force	EN 1154-B2	EN 1154-B2	EN 1154-B2	EN 1154-B4	EN 1154-B4
Max. Door Width	850 mm	850 mm	900 mm	1100 mm	1200 mm
Max. Door Weight	70 kgs	80 kgs	90 kgs	120 kgs	150 kgs
Cylinder	Single cylinder	Single cylinder	Double cylinder	Double cylinder	Double cylinder
Variable closing speed	10s - 0"	10s - 0"	12s - 0"	13s - 0"	12s - 0"
Closing Speed-1	10s	10s	12s	13s	12s
Closing Speed-2	2s - 0"	2s - 0"	2s - 0"	2s - 0"	2s - 0"
Hold Open (standard)	10s, 90"	10s, 90"	10s, 90"	10s, 90"	10s, 90"
Weight of Floor Spring Approx	3.85 kg	3.85 kg	5.1 kg	4.5 kg	5.1 kg
Dimension of current box	250x100x47.5 mm	250x100x49 mm	260x100x40 mm	320x100x40 mm	320x100x40 mm
Rated life	300,000 Cycle	300,000 Cycle	300,000 Cycle	300,000 Cycle	300,000 Cycle

Floor Springs

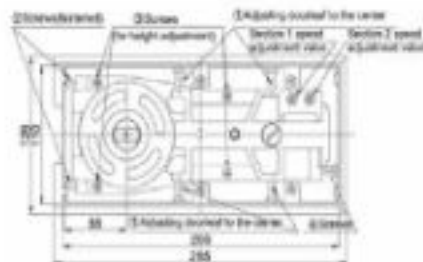
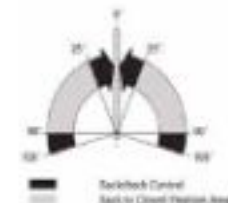


QFS-70-SS

Single Cylinder Floor Spring

Code	Model Pack	Qty.	Price
QFS-70-SS	2 pcs	1 pc	₹ 3,900/-

Cam Action Floor Spring With Closing Force EN 2
 Maximum Door Weight 70kg | Maximum Door Width 850mm
 Closing Speed: 116° | Final Closing Speed: 25° 0"
 Hold Open (Standard): 105° 00" Hold Open
 Weight Of Floor Spring Approx: 5.1kg
 Tested To: 3,00,000 Cycles
 Tested As Per: EN 1154
 Installation Dimension: Length 250mm, Width 100mm, Height 47.5mm

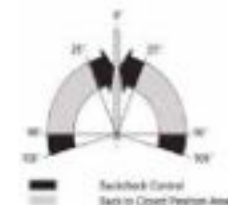


QFS-80

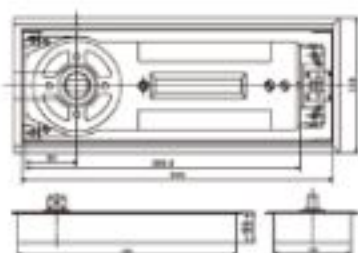
Single Cylinder Floor Spring

Code	Model Pack	Qty.	Price
QFS-80	2 pcs	1 pc	₹ 4,150/-

Cam Action Floor Spring With Closing Force EN 2
 Maximum Door Weight 80kg | Maximum Door Width 850mm
 Closing Speed: 105° | Final Closing Speed: 25° 0"
 Hold Open (Standard): 50° Hold Open
 Weight Of Floor Spring Approx: 3.65kg
 Tested To: 5,00,000 Cycles
 Tested As Per: EN 1154
 Installation Dimension: Length 258mm, Width 103mm, Height 48mm



Floor Springs

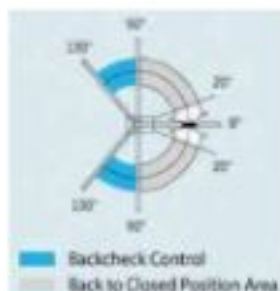


QBFS-74-55

Double Cylinder Floor Spring

Color	Mount Pack	Qty.	Price
L18751-4-025	2 pcs	1 pc	£5,450-

Cam Action Floor Spring With Closing Force EN 2
 Maximum Door Weight 80kg | Maximum Door Width 900mm
 Closing Speed: 120° | Final Closing Speed: 25° 0"
 Hold Open (Standard): 105° 00' Hold Open
 Weight Of Floor Spring Approx: 5.1kg
 Tested To: 5,00,000 Cycles
 Tested As Per: EN 1154
 Installation Dimension: Length 305mm, Width 108mm, Height 40mm



QFS-120

Double Cylinder Floor Spring

Color	Mount Pack	Qty.	Price
L1875-120	2 pcs	1 pc	£5,900-

Cam Action Floor Spring With Closing Force EN 4
 Maximum Door Weight 120kg | Maximum Door Width 1100mm
 Closing Speed: 130° | Final Closing Speed: 20° 0"
 Hold Open (Standard): 90° Hold Open
 Weight Of Floor Spring Approx: 4.0kg
 Tested To: 5,00,000 Cycles
 Tested As Per: EN 1154
 Installation Dimension: 308mm X 110mm X 41mm



Floor Springs



QBFS-94-SS

Double Cylinder Floor Spring

Code	Weight Pack	Qty	Price
QBFS-94-SS	2 pack	1 pc	€ 6,800/-

Cam Action Floor Spring With Closing Force EN 4

Maximum Door Weight 100kg | Maximum Door Width 1200mm

Closing Speed: 120° | Final Closing Speed: 25° 0"

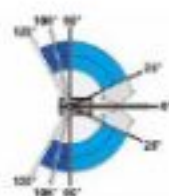
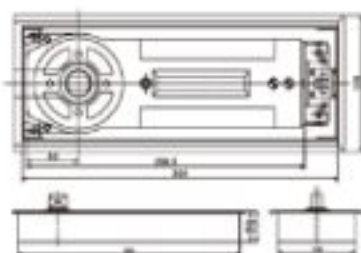
Hold Open (Standard): 105° 00" Hold Open

Weight Of Floor Spring Approx: 5.1kg

Tested To: 5,00,000 Cycles

Tested As Per: EN 1154

Installation Dimension: Length 305mm, Width 108mm, Height 40mm



QFS TP + BP

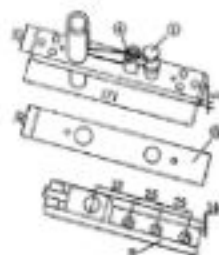
Top & Bottom Pivot for Wooden / Aluminium Door

Code	Weight Pack	Qty	Price
QFS TP + BP	2 pack	1 pc	€ 250/-

Top Pivot Set

Accessories for Wooden / Aluminium Door

Pivot Set



Arm(Door side)

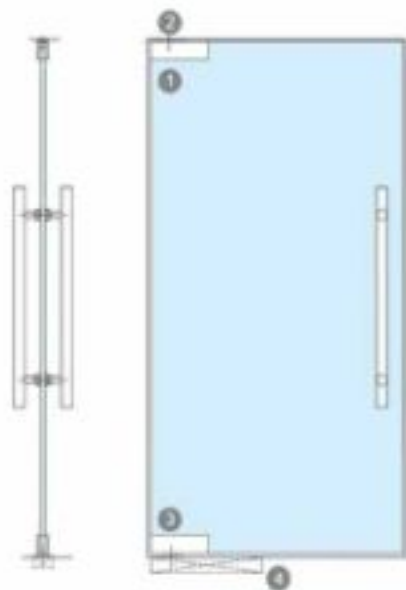


Glass Door Package

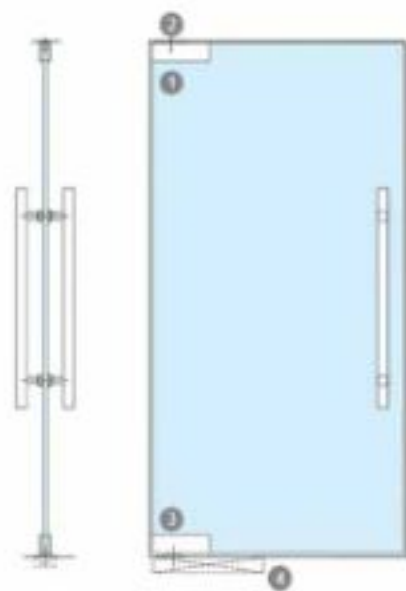


Glass Door Package

Without Lock



With Lock



Glass Door Package

COMFORT (QGDPC - 70/80/120)

QGDPL (With Lock)

Floor Spring	1 No.
Top Patch	1 No.
Bottom Patch	1 No.
Handle Patch Lock	1 No.
Top Panel	1 No.
Glass Door Handle	1 No.

QGDPP (Without Lock)

Floor Spring	1 No.
Top Patch	1 No.
Bottom Patch	1 No.
Top Panel	1 No.

Code	Handle Patch	Qty	Price
QGDPL-70	2 Pcs	1 Set	₹ 8,000/-
QGDPL-80	2 Pcs	1 Set	₹ 9,250/-
QGDPL-120	2 Pcs	1 Set	₹ 10,000/-

Code	Handle Patch	Qty	Price
QGDPP-70	2 Pcs	1 Set	₹ 5,400/-
QGDPP-80	2 Pcs	1 Set	₹ 6,000/-
QGDPP-120	2 Pcs	1 Set	₹ 6,750/-

Glass Door Package for Wooden & Aluminum Door

QGDWP

Floor Spring	1 No.
Top Patch	1 No.
Bottom Patch	1 No.
Glass Door	1 No.

Code	Handle Patch	Qty	Price
QGDWP-0	2 Pcs	1 Set	₹ 5,350/-



Patch Fittings



Patch Fittings



OBPF-1

Over Panel Side Panel Connecting Glass Door Patch

Code	Model Pack	Ctg.	Price
UBP-P-1-0220	10 pcs	1 pc	₹ 1,57,000

Specification / Feature:

Base Material: Aluminum alloy

Cover Plate: SS 304

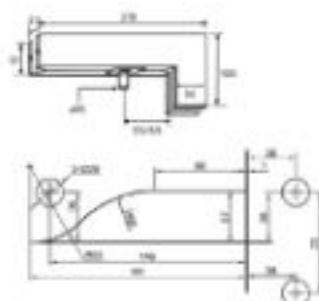
With steel male pivot pin head of diameter 15 mm

Adjustable center distance of pivot 55 to 65 mm

Cover secured with 'Pin Type'

Adjustable pivot point 55/65mm

Glass: Suitable for 10-12 mm glass | Finish: 555



OBPF-2

Top Patch For Glass Door Panel To Connect The Male Pivot Of OBPF 1, OBPF 4 OR OB ACC GDF

Code	Model Pack	Ctg.	Price
UBP-P-2-0220	10 pcs	1 pc	₹ 1,400

Specification / Feature:

Base Material: Aluminum alloy

Cover Plate: SS 304

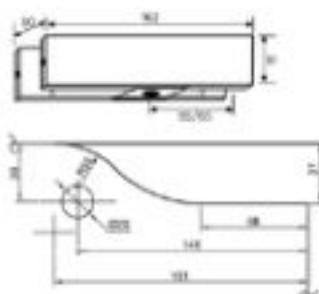
With female pivot suitable for pin head of diameter 15 mm

Adjustable center distance of female pivot 55 to 65 mm

Cover secured with 'Pin Type'

Adjustable pivot point 55/65mm

Glass: Suitable for 10-12 mm glass | Finish: 555



Patch Fittings



QBPF-3

Bottom Patch For Glass Door Panel To Connect Floor Spring Spindle Pivot Of OBFS 74/74

Code	Material Patch	Qty	Price
QBPF-3-0201	20 pcs	1 pc	€ 1,480,-

Specification / Feature:

Base Material: Aluminum alloy

Cover Plate: SS 304

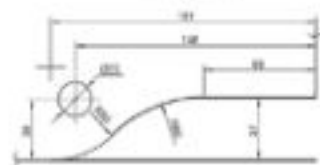
With female pivot suitable for floor spring spindle

Adjustable center distance of female pivot 55 to 65 mm

Cover secured with 'Pin Type'

Adjustable pivot point 55/65mm

Glass: Suitable for 10-12 mm glass | Finish: 555



QBPF-4

Glass Door Patch To Connect Glass Panel With The Wall And Having Pin of 15mm Diameter

Code	Material Patch	Qty	Price
QBPF-4-0201	10 pcs	1 pc	€ 1,800,-

Specification / Feature:

Base Material: Aluminum alloy

Cover Plate: SS 304

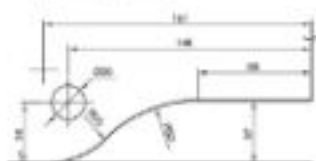
With steel male pivot pin head of diameter 15 mm.

Adjustable center distance of pivot 55 to 65 mm.

Cover secured with 'Pin Type'

Adjustable pivot point 55/65mm

Glass: Suitable for 10-12 mm glass | Finish: 555



Patch Fittings



QBPF-60S

To Fix Glass With A Fixed Structure (Ceiling, Floor Or Wall)

Code	Model Pack	Qty.	Price
QBPF-60S-625	20 pck	1 pc.	₹ 1,500/-

Specification / Feature:

- Patch to secure glass with a fixed structure
- Base Material: Aluminum alloy
- Cover Plate: SS 304 cover
- Cover secured with 'Pin Type'
- Glass: Suitable for 10-12 mm glass
- Finish: SS5



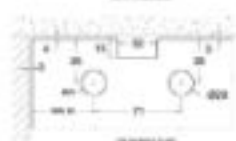
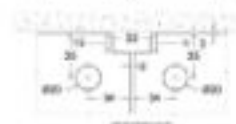
QBPF-50

To Fix Two Glasses Together With A Fixed Structure (Ceiling, Floor Or Wall)

Code	Model Pack	Qty.	Price
QBPF-50-1125	20 pck	1 pc.	₹ 1,100/-

Specification / Feature:

- Patch to secure two glasses with a fixed structure
- Base Material: Aluminum alloy
- Cover Plate: SS 304 cover
- Cover secured with 'Pin Type'
- Glass: Suitable for 10-12 mm glass
- Finish: SS5



Patch Fittings



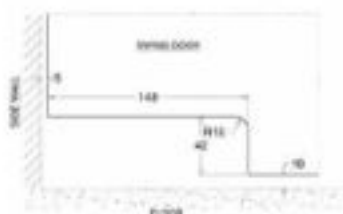
OBPL-1-SSS-E

Bottom Patch Lock With Strike Plate (Economy)

Code	Strike Plt.	Qty	Price
OBPL-1-SSS-E	20 pck	1 pc	₹ 2,500/-

Specification / Feature:

- Base Material: Aluminum alloy
- With a euro profile cylinder
- Cover Plate: SS 304 cover
- Dead bolt projection of 15mm (single throw)
- Cover secured with 'Pin Type'
- Glass: Suitable for 10-12 mm glass / Finish: SSS



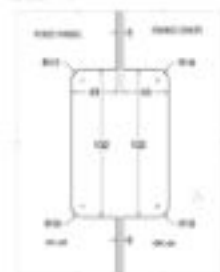
OBPL-1

Control Patch Lock

Code	Strike Plt.	Qty	Price
OBPL-1-SSS	20 pck	1 pc	₹ 2,500/-

Specification / Feature:

- Base Material: Aluminum alloy
- With a euro profile cylinder
- Cover Plate: SS 304 cover
- Dead bolt projection of 15mm (single throw)
- Cover secured with 'Pin Type'
- Glass: Suitable for 10-12 mm glass
- Finish: SSS



Patch Fittings



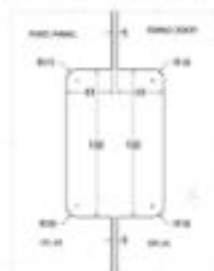
QBPL-2

Strike Box for Control Patch Lock

Code	Strike Pack	Qty	Price
QBPL-2-0201	20 pcs	1 pc	€ 1,450,-

Specification / Feature:

- Base Material: Aluminum alloy
- Cover Plate: SS 304 cover
- Dead bolt projection of 15mm (Female)
- Cover secured with 'Pin Type'
- Glass: Suitable for 10-12 mm glass
- Finish: SS5



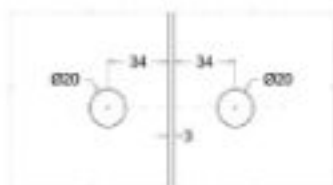
QBPF-60

Glass To Glass Connecting Patch

Code	Strike Pack	Qty	Price
QBPF-60-0201	20 pcs	1 pc	€ 520,-

Specification / Feature:

- Patch to connect Glass to Glass Fix panel
- Base Material: Aluminum alloy
- Cover Plate: SS 304 cover
- Cover secured with 'Pin Type'
- Glass: Suitable for 10-12 mm glass
- Finish: SS5



Patch Fittings



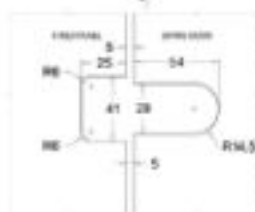
QBGL-2A

Turn Lock Patch

Code	Model Pack	Lt.	Price
QBGL-2A-010	30 pack	1 pt	€ 1,100+

Specification / Features:

- Base Material: Aluminum alloy / Finish: SSN
- Locking with the help of thumb turn
- Cover Plate: SS 304 cover / Comes with Strike Plate
- Dead bolt projection of 10mm (single throw)
- Can also be used for locking door on wall or floor
- Cover secured with 'Pin Type'
- Glass: Suitable for 10-12 mm glass



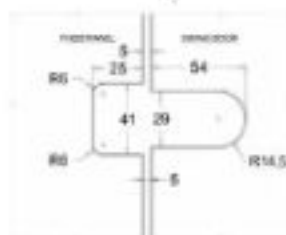
QBGL-2B

Strike Box For Thumb Turn Lock

Code	Model Pack	Lt.	Price
QBGL-2B-010	30 pack	1 pt	€ 1,000+

Specification / Features:

- Base Material: Aluminum alloy
- Cover Plate: SS 304
- Cover secured with 'Pin Type'
- Glass: Suitable for 10-12 mm glass
- Finish: SSN



Patch Fittings



OBGDP

Top Pivot For Glass Door

Code	Material	Pack Qty	Price
OBGDP1-015	304 pol	1 pc	£100-

Application: Secured to the top of glass door to accept the main Pivot of top patch Door patch.

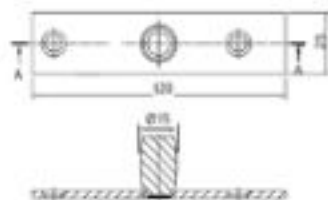
Specification / Features:

Base Material: SS304

Suitable for Top patch of glass door

Dia: 15mm

Finish: SS





Hydraulic Patches

Compliant with EN 1154. Requires no digging or cutting of floor, quick and easy installation with fasteners.



Hydraulic Patches



QBGDP-SSS-12

Glass Door Pivot For Hydraulic Top Patch

Code	Mounting Pack	Qty	Price
QBGDP-SSS-12	Nil pack	1 pc	₹ 380/-

Application: Secured to the top of glass door to accept the male Pivot of top patch door patch.

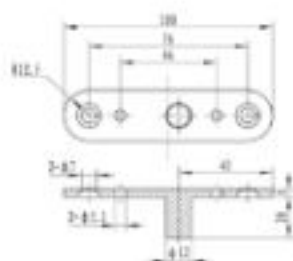
Specification / Features:

Base Material: SS304

Suitable for Top patch of glass door

Dia:12mm

Finish: SSS



QBFH-10

Hydraulic Patch Set

Code	Mounting Pack	Qty	Price
QBFH-10-220	0 set/c	1 set	₹ 11,700/-

Specification / Features:

Single Cylinder Com Action Non Digging Floor Hinge

Base Material: Aluminum alloy | Suitable for 10-12 mm glass

Closing force EN 1154 with Two adjustable closing speed

Maximum door weight 60 Kg | Maximum door width 800 mm

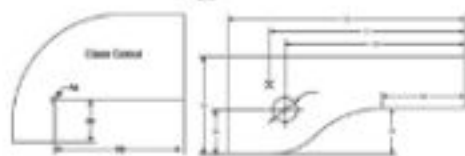
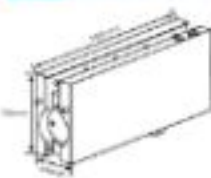
Bottom hydraulic patch with combined floor spring.

Hold open at 90 degree | Uniquely designed adjustable base

No floor work or preparation necessary

Allows for easy installation and savings on labour

Suitable for internal use/low traffic area



Hydraulic Patches



QBFH-11

Hydraulic Patch Set

Code	Material Pack	Qty	Price
QBPH-11-0025	8 pack	1 set	₹ 13,250/-

Specification / Features:

- Single Cylinder Cam Action Non Digging Floor Hinge
- Base Material: Aluminum alloy | Suitable for 10-12 mm glass
- Closing force EN 1154 with Two adjustable closing speed
- Maximum floor weight 100 Kg | Maximum door width 1000 mm
- Bottom hydraulic patch with combined floor spring
- Held open at 90 degree | Uniquely designed adjustable base
- No floor work or preparation necessary
- Allows for easy installation and savings on labour

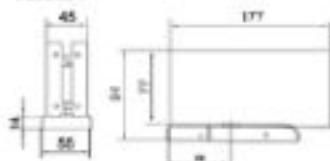
Suitable for external use



• Glass Cutout



• Dimension





Glass Door Pull Handles



Glass Door Pull Handles



A door handle or pull handles are used in glass doors, it is a mechanism used to open or close a door without difficulty, pull handles are operated by pulling on the ring, pull handles offer a comfortable and firm grip on doors. Easy to install handles with lock mechanism find ideal application in glass doors installed in houses, office cabins, shopping malls, conference halls. Lock handles have a unique feature of a turn-down knob on the inside and a key lock on outside on locking the striker of the lock goes inside the floor.



Glass Door Pull Handles

OBGHL-3

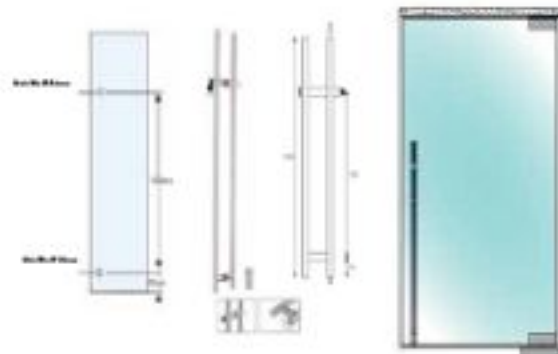
Glass Door Pull Handle with Locking Function

Specification / Features:

- Two point fixing with door
- Integral locking facility
- Key operated from outside
- Thumb turn inside
- Supplied with high security keys
- Dead bolt movement 52mm

Material: SS 304

Finish: SS5



Code	Overall L. of Handle	Centre to Centre of Hole	Handle Hole Size/Ø	Plate Thickness	Qty.	Mounting Pack	MSD*
OBGHL-3-2225	1000mm	420mm / 1120mm	25mm	18mm on either forward panel, 24mm for lock panel	1 set	4 sets	€ 16,000/-

OBGHL-4

Glass Door Handle D Type

Specification / Features:

- Gaskets to prevent glass damage (Rub
noses kept out of sight)
- For back to back installation

Material: SS 304

Finish: P55/SS5



Code	Finish	Overall L. of Handle	Centre to Centre of Hole	Handle Hole Size/Ø	Plate Thickness	Qty.	Mounting Pack	MSD*
OBGHL-4-1525-325*25	P55	1225mm	300mm	25mm	12mm	1 set	10 sets	€ 2,150/-
OBGHL-4-1525-450*25	P55	1450mm	420mm	25mm	12mm	1 set	10 sets	€ 2,180/-
OBGHL-4-1525-600*25	P55	1600mm	520mm	25mm	12mm	1 set	10 sets	€ 2,180/-
OBGHL-4-2225-1525-325*25	SS5 / P55	1225mm	300mm	25mm	12mm	1 set	10 sets	€ 2,310/-
OBGHL-4-2225-1525-450*25	SS5 / P55	1450mm	420mm	25mm	12mm	1 set	10 sets	€ 2,340/-
OBGHL-4-2225-1525-600*25	SS5 / P55	1600mm	520mm	25mm	12mm	1 set	10 sets	€ 2,340/-

Glass Door Pull Handles

OBGHL-5

H Type Handle

Specification / Features:

- Gaskets to prevent glass damage
- Grab screws kept out of sight
- For back to back installation

Material: SS 304

Finish: P55/S55



Code	Finish	Overall Length (A)	Center to Center of Hole (B)	Handle Hole Dia (C)	Hole Dia	Ctg.	Gasket Pack	MSD*
LIBGHL-5-SS-300*25	S55	300mm	250mm	25mm	12mm	1 set	10 sets	€ 1,480/-
LIBGHL-5-SS-400*25	S55	400mm	350mm	25mm	12mm	1 set	10 sets	€ 2,000/-
LIBGHL-5-SS-450*32	S55	450mm	305mm	32mm	12mm	1 set	10 sets	€ 2,480/-
LIBGHL-5-SS-600*25	S55	600mm	450mm	25mm	12mm	1 set	10 sets	€ 2,980/-
LIBGHL-5-SS-600*32	P55	600mm	450mm	32mm	12mm	1 set	10 sets	€ 3,180/-
LIBGHL-5-SS-900*32 (Lg)	S55	900mm	700mm	32mm	12mm	1 set	10 sets	€ 4,280/-
LPH-5-SS-1300*32	S55	1300mm	1100mm	32mm	12mm	1 set	10 sets	€ 8,320/-
LIBGHL-5-SS-5100-300*25	S55+P55	300mm	250mm	25mm	12mm	1 set	10 sets	€ 1,480/-
LIBGHL-5-SS-5100-400*25	S55+P55	400mm	305mm	25mm	12mm	1 set	10 sets	€ 2,000/-
LIBGHL-5-SS-5100-450*32	S55+P55	450mm	305mm	32mm	12mm	1 set	10 sets	€ 2,480/-
LIBGHL-5-SS-5100-600*25	S55+P55	600mm	450mm	25mm	12mm	1 set	10 sets	€ 2,980/-
LIBGHL-5-SS-5100-600*32	S55+P55	600mm	450mm	32mm	12mm	1 set	10 sets	€ 3,180/-
LIBGHL-5-SS-5100-900*32	S55+P55	900mm	700mm	32mm	12mm	1 set	10 sets	€ 4,280/-
LIBGHL-5-SS-5100-1300*32	S55+P55	1300mm	1100mm	32mm	12mm	1 set	10 sets	€ 8,320/-

OBGHL-5-E-SS-450*32

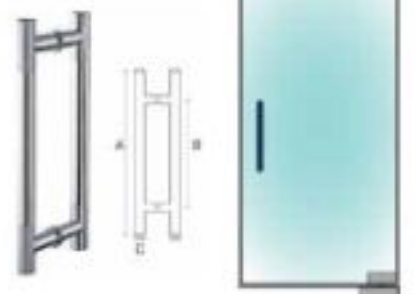
Glass Door Handle: H Type (Economy)

Specification / Features:

- Gaskets to prevent glass damage
- Grab screws kept out of sight
- For back to back installation

Material: SS 202

Finish: P55/S55



Code	Finish	Overall Length (A)	Center to Center of Hole (B)	Handle Hole Dia (C)	Hole Dia	Ctg.	Gasket Pack	MSD*
LIBGHL-5-E-SS-5000-450*32	P55/S55	450mm	305mm	32mm	12mm	1 set	10 sets	€ 1,320/-

Glass Sliding Handles & Locks



Glass Sliding Handles & Locks

QSLDH 001

Sliding Glass Door Handle: Round Type

Specification / Features:

- Baskets to prevent glass damage
- Internal threading to provide better grip with glass
- Far back to back installation

Material: SS 304

Finish: PPS/SSS



Code	Profile	Handle Outer Dia (H)	Glass Hole Diameter (D)	Qty.	Mounts / Pack	MSD*
LPSLDM-001-4-1520	1520	58mm	50mm	1 pc	20 pcs	₹ 1,200/-
LPSLDM-001-6-2200	2200	58mm	50mm	1 pc	20 pcs	₹ 1,200/-

QSLDH-003

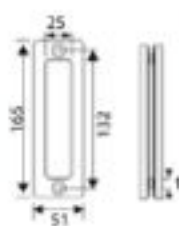
Sliding Glass Door Handle: Rectangular Type

Specification / Features:

- Baskets to prevent glass damage
- Internal threading to provide better grip with glass
- Far back to back installation

Material: SS 304

Finish: PPS/SSS



Code	Profile	Handle L x W (H)	Glass H x Glass W (D)	Glass Hole Dimension (L x D)	Qty.	Mounts / Pack	MSD*
LPSLDM-003-4-1520	1520	165x51 mm	132 mm	14mm	1 pc	20 pcs	₹ 2,150/-
LPSLDM-003-6-2200	2200	165x51 mm	132 mm	14mm	1 pc	20 pcs	₹ 1,850/-

QBPL-4A-SN

Wall To Glass Door Lock With Striko Plate

Specification / Features:

- Patch Lock with Striko Plate (no cutout required)
- Suitable for 10mm & 12mm glass
- Requires No Cutout in Glass

Operates with key on one side other side blind

Material: SS 304

Finish: SSS



Code	Profile	Handle L x W (H)	Glass H x Glass W (D)	Glass Hole Dimension (L x D)	Qty.	Mounts / Pack	MSD*
LBPPL-4A-6SN	6200	78x36 mm	58mm	14mm	1 pc	20 pcs	₹ 1,800/-

Glass Sliding Handles & Locks

QBPL-4B-SN

Glass To Glass Door Lock With Strike Box

Specification / Features:

Patch Lock with Strike Box (no cutout required)

Suitable for 10mm & 12mm glass

Requires No Cutout in Glass

Operates with key on one side other side blind

Material: SS 304

Finish: SSB



Code	Finish	Handle L x W (A)	Lockset H Center On (B)	Glass Hole Diameter (C)	Qty.	Model Pack	MSRP
QBPL-4B-SN	SSB	76x76 mm	58mm	14mm	1 pc	211 pcs	₹ 1,200/-

QBPL-4C-SN

Glass Door Lock Body

Specification / Features:

Patch Lock with Strike Plate (no cutout required)

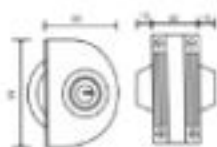
Suitable for 10mm & 12mm glass

Requires No Cutout in Glass

Operates with both side key

Material: SS 304

Finish: SSB



Code	Model Pack	Finish	Handle L x W (A)	Lockset H Center On (B)	Glass Hole Diameter (C)	Qty.	MSRP
QBPL-4C-SN	211 pcs	SSB	76x76 mm	58mm	14mm	1 pc	₹ 1,200/-

QBPL-4D-SN

Wall To Glass Door Lock With Strike Plate

Specification / Features:

Patch Lock with Strike Box (no cutout required)

Suitable for 10mm & 12mm glass

Requires No Cutout in Glass

Operates with one side key on one side Knob

Material: SS 304

Finish: SSB



Code	Finish	Handle L x W (A)	Lockset H Center On (B)	Glass Hole Diameter (C)	Qty.	Model Pack	MSRP
QBPL-4D-SN	SSB	76x76 mm	58mm	14mm	1 pc	40 pcs	₹ 1,200/-

Glass Sliding Handles & Locks

OBPL-4E-SN

Glass Door Lock Strike Box

Specification / Features:

Patch Lock with Strike Box (no cutout required)

Suitable for 10mm & 12mm glass

Requires No Cutout in Glass

Material: SS 304

Finish: SSB



Lock	Finish	Handle L x W (H)	Center to Center Str. (C)	Lock Plate Thickness (T)	Qty.	Mounting Pack	MSRP
OBPL-4E-SN	SSB	76x76 mm	50mm	14mm	1 pc	23 pcs	£385.00



Automatic Sensor Door



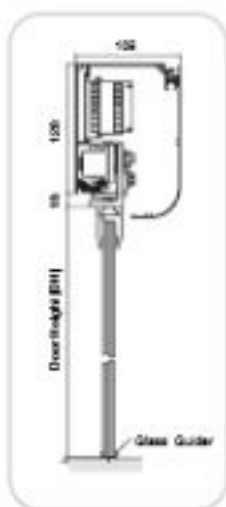
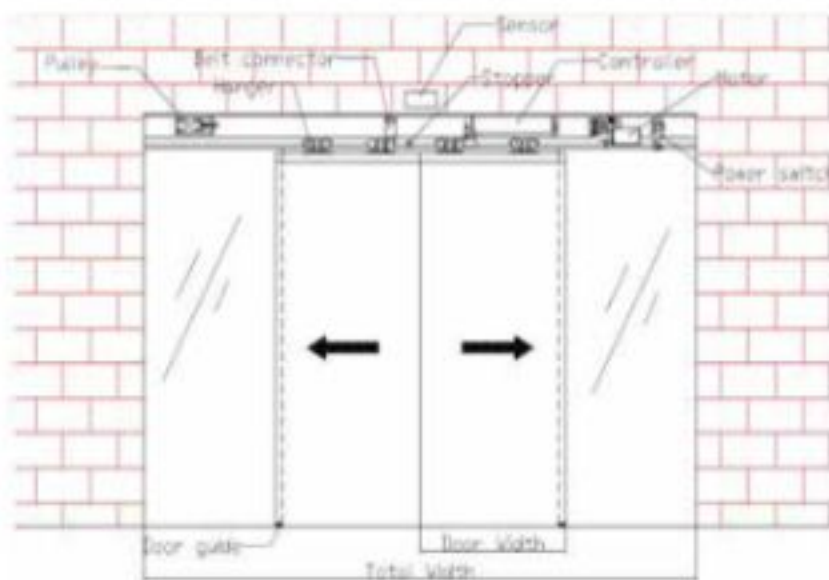
Automatic Sensor Door

ARTEZA NEW RANGE OF AUTOMATIC DOOR WITH SPECIAL JAPANESE DESIGN



Cross Section Detail

INSTALLATION



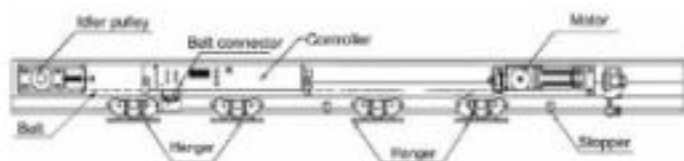
Frameless Door

CERTIFICATIONS



Automatic Sensor Door

AUTOMATIC SLIDING DOOR SYSTEM (DOUBLE) - 810.0016.0549



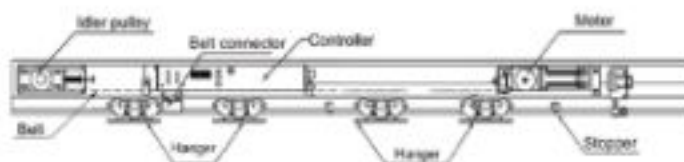
SET OF: 4.2 METER MRP: ₹ 1,54,900/-

Code	Double Panel	Double Panel Maximum Opening
G-AMD-4.2 KT	2x120 Kgs	2000mm x 2700mm

G-AMD-4.2 KT

	QTY.	UNIT
Controller	1	Pcs
Motor	1	Pcs
Door Sensor	1	Pair
Timing Belt	1	Roll
Power Button	1	Pcs
Belt Connector	1	Pair
Stopper	1	Pair
Anti-drop Hanger	1	Pair
Idle Pulley	1	Pcs
Aluminum Track	1	Pcs (4.2 meter)
Aluminum Cover	1	Pcs (4.2 meter)
Cover End Plate (end cover)	1	Pair
Glass Clamp	1	Pair (1 meter)
Floor Guide	1	Pair

AUTOMATIC SLIDING DOOR SYSTEM (DOUBLE) - 810.0016.0846



SET OF: 5 METER MRP: ₹ 1,57,100/-

Code	Double Panel	Double Panel Maximum Opening
G-AMD-5.0 KT	2x120 Kgs	2400mm x 2700mm

G-AMD-5.0 KT

	QTY.	UNIT
Controller	1	Pcs
Motor	1	Pcs
Door Sensor	1	Pair
Timing Belt	1	Roll
Power Button	1	Pcs
Belt Connector	1	Pair
Stopper	1	Pair
Anti-drop Hanger	1	Pair
Idle Pulley	1	Pcs
Aluminum Track	1	Pcs (5 meter)
Aluminum Cover	1	Pcs (5 meter)
Cover End Plate (end cover)	1	Pair
Glass Clamp	1	Pair (1.2 meter)
Floor Guide	1	Pair

Automatic Sensor Door

FUNCTIONAL DETAILS: WORKING MODULE

Automatic	•	Access keypad terminal	•
Always open	•	Inter-lock function	•
Partial open	•	LED display	•
Full-lock	•	Photocell	•
One way	•	UPS	•
Self-learning	•	Electronic lock	•
Self-lock	•	CE certification	•
Error message	•		
Anti-clamp function	•		

• Standard function • Optional function - No function

TECHNICAL DETAILS

Max door weight (single)	1	*120kgs
Max door weight (double)	2	*120kgs
Door leaf width		600-1500mm
Opening speed		150-550mm/s (Adjustable)
Closing speed		150-550mm/s (Adjustable)
Motor details		24V 85W 2300rpm
	b	brushless DC motor
Holding time	0	-60seconds (Adjustable)
Voltage		AC90-240V 50Hz-60Hz
Operating temperature		10°C~70°C

MAIN PART OF OPERATOR



LED Controller



Motor



Power Switch HM



Infrared Sensor



Pulley



Belt



Belt Connector



Stopper



Anti-Drop Hanger



Glass Clamp

In pair for double door
single piece for single panel door

Automatic Sensor Door

ACCESSORIES (The order need to be placed separately)



AUTOMATIC DOOR FUNCTION SWITCH

OLD CODE	MRP
Q-AMD-ACC-001	₹ 6,300/-

Function switch: 5 MODES

Full-open, partial open, automatic, lock, one way.

AUTOMATIC DOOR ACCESS KEYPAD

OLD CODE	MRP
Q-AMD-ACC-002	₹ 6,850/-

Technical data

- Working voltage DC12V
- Storage capacity 800 user
- Max. card detect distance 15-20C M

Door open method

- ID Card (OPTIONAL)
- Password
- ID Card with password (OPTIONAL)

Can connect with access switch and control the lock working status, with high anti-interference ability and self protect function.



AUTOMATIC DOOR FUNCTION REMOTE

OLD CODE	MRP
Q-AMD-ACC-003	₹ 7,830/-

Technical data

- Power supply: AC/DC 12~24V
- Frequency: 433MHz
- Working model: learning code

PRODUCT FEATURES

- Learning code function, easy to add or delete remotes,



Automatic Sensor Door

BATTERY POWER BACKUP

OLD CODE	MRP
Q-AMD-ACC-004	₹ 43,430/-

Technical data

Power input	AC170-264V 50Hz
Power output	DC 24V 2.6AH (battery)



Product features

*Popular design - when input of controller has power, it can charge the battery.

*100 times door will work (Approx. 3 hours backup)

* 6 month warranty only

SAFETY BEAM /PHOTOCELL SENSOR

OLD CODE	MRP
QSLDA-014	₹ 12,360/-

Safety Beam / Photocell Sensor (Light Barrier)
/ Photocell Sensor

Technical data

Power supply	AC/DC 12-24V
Mounting distance	Max. 10m
Relay output	N.O. N.C.



Product features

- It has N.C. and N.O. relay output, and can work with different type automatic controller.
- The photocell's eye is made by special material to avoid the sunshine affect.
- The controller will alarm if the eyes have a problem.

Spider Fittings



Spider Fittings



Structural Glass & Spider Glazing curtain walls provide maximum daylight for building interiors, as well as the possibility of placing large transparent glass surfaces as building envelopes. Due to its visual attractiveness, such architectural building envelopes are commonly used on commercial buildings to create premium building skins.

A wide variety of applications are available, including curtain walls, canopies and atriums, allowing maximum transparency, brightness optimization and unique design.

Structural Glass & Spider Glazing facades are best categorized by the structural system types used to support them. Technology used to fix glass panes includes use of special fittings, such as spiders, mullions, clamps, tension rods and other supporting parts, which are connected to the supporting structure. All hardware is made of high quality satin finish polished stainless steel (graded 316/304), ensuring best possible protection against oxidation and corrosion.

Glass panels are provided in various shapes and are installed without additional vertical and horizontal profiles on the outer side of the façade, being connected by special structural silicone highly resistant to weather conditions.

Spider Fittings

QASF-111

To Hold Four Glasses With Fin Glass

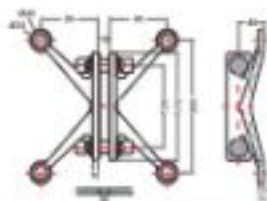
Specification / Features:

- Four Way Fin Spider | Installed with nuts
- Teflon & PVC washers prevent glass damage
- Firm holding with fin | Stainless Steel

Material: SS 316

Finish: PPS/SSS

Code	Finish	Qty	Shower Pack	SPR
QASF-111-1525	1525	1 pc	5 pack	€ 7,400-
QASF-111-2025	2025	1 pc	5 pack	€ 7,200-



QASF-001

To hold One Glass without Fin

Specification / Features:

- One Way Spider | 200mm arm
- Attached to a fixed structure
- Installed with nuts | Stainless Steel

Material: SS 316

Finish: PPS/SSS

Code	Finish	Qty	Shower Pack	SPR
QASF-001-1525	1525	1 pc	5 pack	€ 2,600-
QASF-001-2025	2025	1 pc	5 pack	€ 2,400-



QASF-002

To hold Two Glasses without Fin at 180°

Specification / Features:

- Two Way Spider | 200mm arm
- Attached to a fixed structure
- Installed with nuts | Stainless Steel

Material: SS 316

Finish: PPS/SSS

Code	Finish	Qty	Shower Pack	SPR
QASF-002-1525	1525	1 pc	5 pack	€ 3,400-
QASF-002-2025	2025	1 pc	5 pack	€ 3,100-



Spider Fittings

QASF-112

To hold Two Glasses without Pin at 90°

Specification / Features:

Two Way Spider 90° | 200mm arm

Attached to a fixed structure

Installed with nuts | Stainless Steel

Material: SS 316

Finish: P65/SS5

Code	Pinch	Ctg.	Standard Pack	Net Wt.
LIASP-112-1020	1020	1 pc	5 pcse	74,100g
LIASP-112-1025	1025	1 pc	5 pcse	71,100g



QASF-004

To Hold Four Glasses Without Pin

Specification / Features:

Four Way Spider | 200mm arm

Attached to a fixed structure

Installed with nuts | Stainless Steel

Material: SS 316

Finish: P65/SS5

Code	Pinch	Ctg.	Standard Pack	Net Wt.
LIASP-004-1020	1020	1 pc	5 pcse	74,100g
LIASP-004-1025	1025	1 pc	5 pcse	71,100g



Spider Fittings

QRT-001

Fixed Bolt To Use Along With Spiders

Specification / Features:

Fixed Round / Flat head bolt / Teflon/PVC washers to prevent damage to glass

Adjustable up to 12mm thickness of glass / Stainless Steel

Material: 304

Finish: PPS/SSS

Code	Profile	Qty.	Min. Hole Dia.	MSD
LH0-001-125	125	1 pc.	20mm	₹ 1,250/-
LH0-001-150	150	1 pc.	20mm	₹ 1,250/-



QRT-004

Articulated Bolt To Use Along With Spiders

Specification / Features:

Articulated Round Bolt / Flat head bolt

Teflon/PVC washers to prevent damage to glass

Adjustable up to 15mm thickness of glass / Stainless Steel

Material: 304

Finish: PPS/SSS

Code	Profile	Qty.	Min. Hole Dia.	MSD
LH0-004-125	125	1 pc.	20mm	₹ 2,000/-
LH0-004-150	150	1 pc.	20mm	₹ 1,950/-



QRT-005

To Hold Without Pin Spiders To Structure

Specification / Features:

Spider Holder / Bush

Ensure proper gripping of without pin spiders

Bottom part MS for welding compatibility with MS structure

Top part stainless steel for better aesthetics (SS 304)

Stainless Steel & MS

Material: 304/MS

Finish: PPS/SSS

Code	Profile	Qty.	Min. Hole Dia.	MSD
LH0-005-125	125	1 pc.	20mm	₹ 1,300/-
LH0-005-150	150	1 pc.	20mm	₹ 1,250/-



Spider Fittings

QSFP-200

Fin Plates

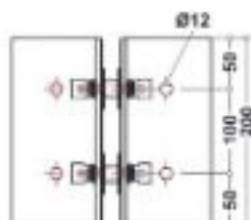
Specification / Features:

- Fin Plate 200mm | Two Point holding of Fin
- Teflon washers to prevent damage to glass
- Flat base to hold strongly with floor or ceiling | Stainless Steel

Material: 304

Finish: PPS/SSS

Code	Profile	Qty.	Mount Pack	SS ST
LI50H*200-1025	1025	1 pc.	2 pack	€ 6,20/EA
LI50H*200-1025	1025	1 pc.	2 pack	€ 7,00/EA



QSFP-300

Fin Plates

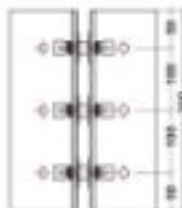
Specification / Features:

- Fin Plate 300mm | Three Point holding of Fin
- Teflon washers to prevent damage to glass
- Flat base to hold strongly with floor or ceiling | Stainless Steel

Material: 304

Finish: PPS/SSS

Code	Profile	Qty.	Mount Pack	SS ST
LI50H*300-1025	1025	1 pc.	2 pack	€ 6,20/EA
LI50H*300-1025	1025	1 pc.	2 pack	€ 6,60/EA



Spider Fittings

QSSP-300

Splice Plates

Specification / Features:

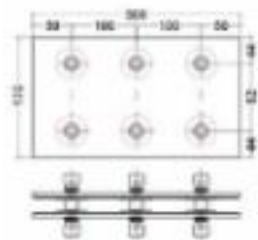
Splice Plate 300mm | Three point holding with each fin part

Teflon/PVC washers to prevent damage to glass | Stainless Steel

Material: 304

Finish: P36/SS5

Code	Part	Qty	Splice Pack Size	Price
LI021-QSSP-300-1521	1521	1 pc	2 pcs	₹ 111,000/-
LI021-QSSP-300-2221	2221	1 pc	2 pcs	₹ 111,000/-



QSSP-200

Splice Plates

Specification / Features:

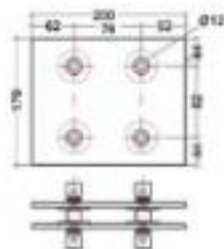
Splice Plate 200mm | Two point holding with each fin part

Teflon/PVC washers to prevent damage to glass | Stainless Steel

Material: 304

Finish: P36/SS5

Code	Part	Qty	Splice Pack Size	Price
LI021-QSSP-200-1521	1521	1 pc	2 pcs	₹ 7,500/-
LI021-QSSP-200-2221	2221	1 pc	2 pcs	₹ 7,500/-





Shower Hinges & Glass Connectors

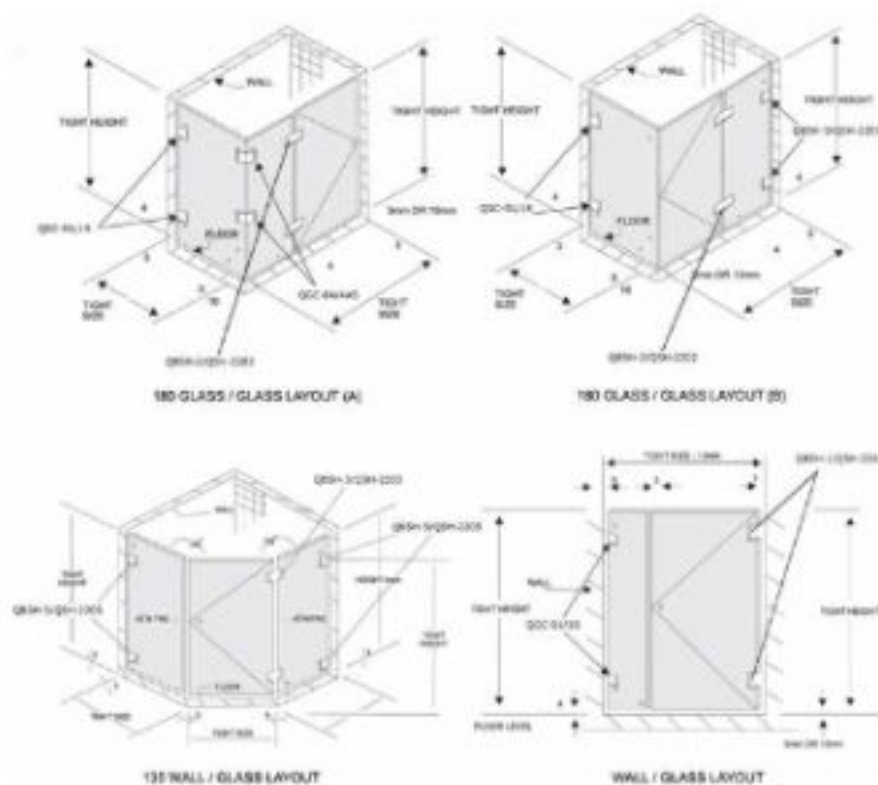


Shower Hinges & Glass Connectors

SHOWER CUBICLES HARDWARE FITTINGS

Frameless shower enclosure has become an integral part of the modern bathroom interesting way to give your bathroom a new, elegant look without remodeling the whole space, available in architecturally pleasing designs, glass shower enclosures have become very popular among builders and home owners for creating beautiful bathroom interiors. A glass shower cubicle helps in creating a separate bathing space within the bathroom. These cubicles act as a partition and restrict vision from the outside. Listed below are the top advantages of installing glass shower enclosure in your bathroom:

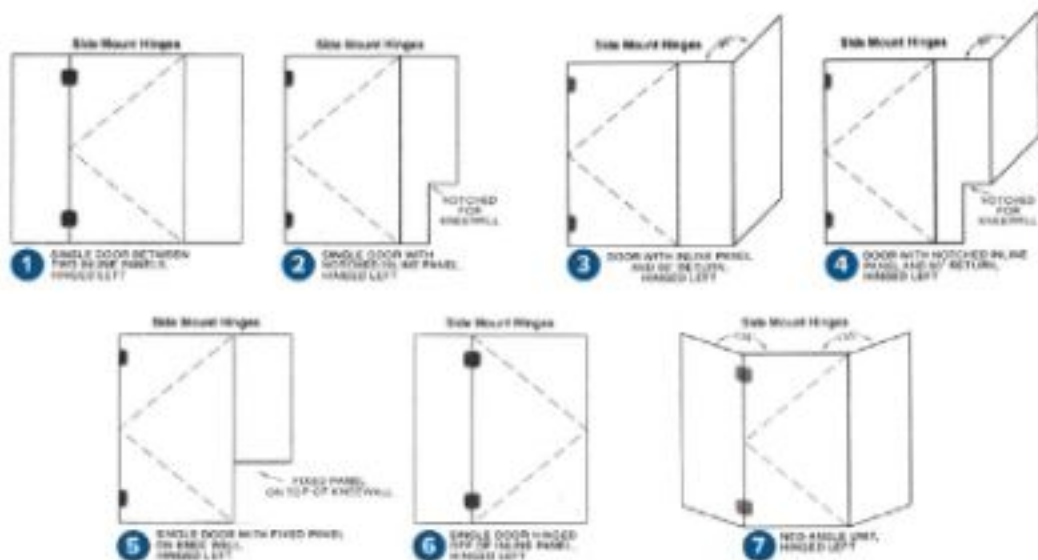
Used along with 8mm to 12mm tempered or laminated glass these cubicles are customized as per site requirements and preferences. We offer wide range of accessories which complement the complete concept along with offering a safe and long life cubicle system.



Shower Hinges: Brass

Most Popular Designs

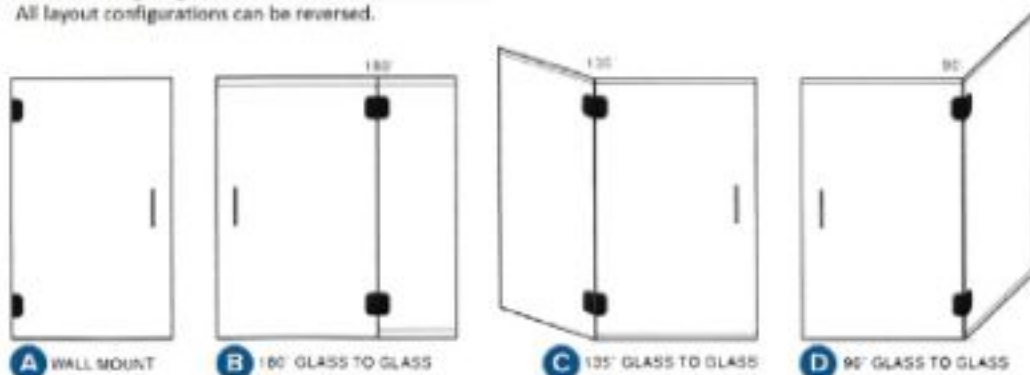
All layout configurations can be reversed.



Other Standard layouts

Side Mounting Hinges, Wall Mounts, and Glass to Glass

All layout configurations can be reversed.



Shower Hinges: Brass

OSH -2203

Glass to Glass door Hinge at 135°

Specification / Features:

Glass to Glass Hinge 135°

Centrally positioned pivot line

Secure holding with glass | High rigidity

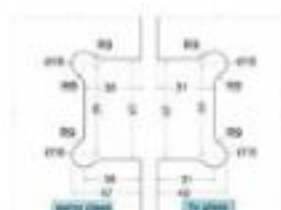
With gaskets to prevent glass damage

Glass thickness 8mm / 12mm

Material: Brass Alloy

Finish: CP/N

Code	Finish	Cty.	Master Pack	MSD*
L12M-2203-L2*	G1*	1 pc	20 pack	€ 4,480/-
L12M-2203-SN	SN	1 pc	20 pack	€ 4,890/-



OSH -2204

Glass to Glass door Hinge at 90°

Specification / Features:

Glass to Glass Hinge 90°

Secure holding with glass

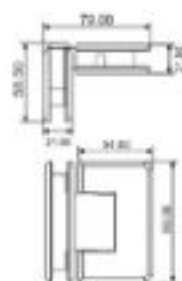
High rigidity

With gaskets to prevent glass damage

Glass thickness 8mm / 12mm

Material: Brass Alloy | Finish: CP/N

Code	Finish	Cty.	Master Pack	MSD*
L12M-2204-L2*	G1*	1 pc	20 pack	€ 4,850/-
L12M-2204-SN	SN	1 pc	20 pack	€ 5,140/-



Shower Hinges: Brass

QSH -2205

Wall to Glass Offset door Hinge

Specification / Features:

Wall to Glass Hinge

Offset Positioned Pivot Line

Can be used for double action doors also

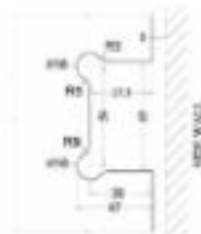
Secure holding with glass | High rigidity

With gaskets to prevent glass damage

Glass thickness 8mm / 12mm

Material: Brass Alloy | Finish: CP/N

Code	Finish	Qty	Package	MSD*
L15H-2205-12*	12*	1 pc	20 pack	£ 2,800-
L15H-2205-NN	NN	1 pc	20 pack	£ 3,110-



QSH -2207

Wall To Glass Hinge/Bracket To Fix Glass

Specification / Features:

Wall to Glass Bracket

Offset Positioned Pivot Line

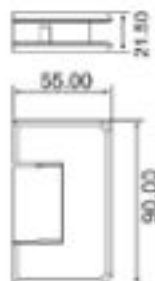
Secure holding with glass

With gaskets to prevent glass damage

Glass thickness 8mm / 12mm

Material: Brass Alloy | Finish: CP/N

Code	Finish	Qty	Package	MSD*
L15H-2207-12*	12*	1 pc	20 pack	£ 2,100-
L15H-2207-NN	NN	1 pc	20 pack	£ 2,210-



Shower Hinges: SS - 304

OBSH - 1

Wall To Glass Door Hinge

Specification / Features:

- Centrally positioned pivot line
- Can be used for double action doors also
- Secure holding with glass
- With gaskets to prevent glass damage
- Glass thickness 8mm / 12mm
- Glass thickness 8mm / 12mm | Material: SS 304
- Finish: P35/SS5

Code	Finish	C.P.	Model / Pack	SRP*
CBSH-14-125	125	1 Pz	201 Pz	₹ 2,360/-
CBSH-14-125	125	1 Pz	201 Pz	₹ 4,190/-
CBSH-14-125 YU	125 YU	1 Pz	201 Pz	₹ 3,760/-
CBSH-14-11 YU	125 YU	1 Pz	201 Pz	₹ 3,760/-
CBSH-14-88 YU	88 YU	1 Pz	201 Pz	₹ 3,860/-



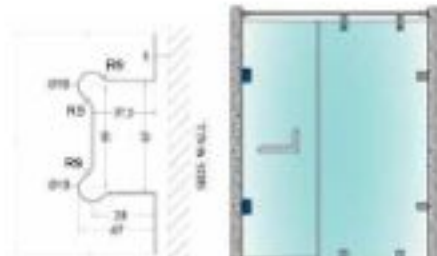
OBSH - 1 F

Wall To Glass Offset Door Hinge

Specification / Features:

- Offset Positioned Pivot Line
- Can be used for double action doors also
- Secure holding with glass | High rigidity
- With gaskets to prevent glass damage
- Glass thickness 8mm / 12mm | Material: SS 304
- Finish: P35/SS5

Code	Finish	C.P.	Model / Pack	SRP*
CBSH-1F-125	125	1 Pz	201 Pz	₹ 2,540/-
CBSH-1F-125	125	1 Pz	201 Pz	₹ 4,340/-
CBSH-1F-125 YU	125 YU	1 Pz	201 Pz	₹ 3,760/-
CBSH-1F-11 YU	125 YU	1 Pz	201 Pz	₹ 3,760/-
CBSH-1F-88 YU	88 YU	1 Pz	201 Pz	₹ 3,820/-



Shower Hinges: SS - 304

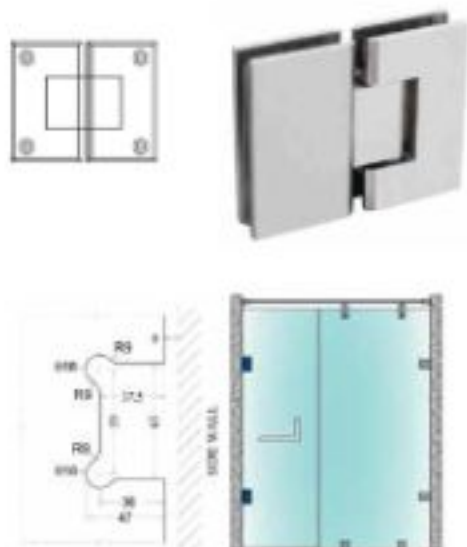
OBSH - 2

Glass To Glass Door Hinge at 180°

Specification / Features:

- Centrally positioned pivot line
- Can be used for double action doors also
- Secure holding with glass
- With gaskets to prevent glass damage
- Glass thickness 8mm / 12mm | Material: SS 304
- Finish: P55/S55

Code	Finish	C/Op	Model / Size	MRP (₹)
CBSH-241525	1525	1 Pz	2011xw	₹ 3,050/-
CBSH-242225	2225	1 Pz	2011xw	₹ 3,250/-
CBSH-241827VU	1827VU	1 Pz	2011xw	₹ 5,350/-
CBSH-24119VU	119VU	1 Pz	2011xw	₹ 5,850/-
CBSH-24879VU	879VU	1 Pz	2011xw	₹ 4,420/-



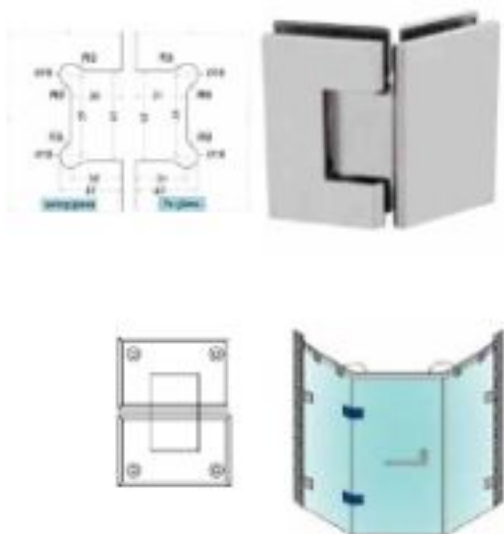
OBSH - 3

Glass To Glass Door Hinge at 180°

Specification / Features:

- Centrally positioned pivot line
- Can be used for double action doors also
- Secure holding with glass
- With gaskets to prevent glass damage
- Glass thickness 8mm / 12mm | Material: SS 304
- Finish: P55/S55

Code	Finish	C/Op	Model / Size	MRP (₹)
CBSH-341525	1525	1 Pz	2011xw	₹ 3,050/-
CBSH-342225	2225	1 Pz	2011xw	₹ 3,250/-
CBSH-341827VU	1827VU	1 Pz	2011xw	₹ 5,350/-
CBSH-34119VU	119VU	1 Pz	2011xw	₹ 5,850/-
CBSH-34879VU	879VU	1 Pz	2011xw	₹ 4,840/-



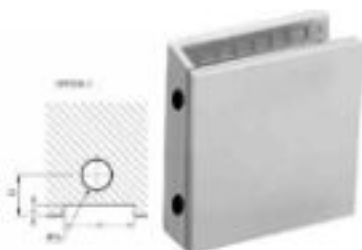
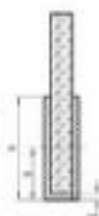
Glass Connectors: SS - 304

OGC-01

Floor Mounting Glass Connector

Specification / Features:

- Strengthening glass structure
- Firm holding with floor / Small size for aesthetics
- With gaskets to prevent glass damage
- Glass thickness 8mm / 12mm | Material: SS 304
- Made from casting & thickness of connector is 5mm
- Finish: PNR /SSS



Code	Finish	Qty.	Weight (kg)	Area (m ²)
OGC-01-01	PNR	1 pc	100 gms	1 / 0.01
OGC-01-02	SSS	1 pc	100 gms	1 / 0.01

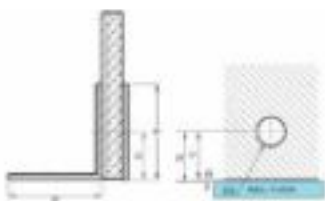


OGC-04

Wall to Glass 90° connector

Specification / Features:

- Strengthening glass structure
- Small size for aesthetics
- With gaskets to prevent glass damage
- Suitable: 8-12 mm Glass
- Made from casting & thickness of connector is 5mm
- Material: SS 304
- Finish: PNR /SSS



Code	Finish	Qty.	Weight (kg)	Area (m ²)
OGC-04-01	PNR	1 pc	80 gms	1 / 0.01
OGC-04-02	SSS	1 pc	80 gms	1 / 0.01



Glass Connectors: SS - 304

OGC-02

Glass to Glass 135° connector

Specification / Features:

Strengthening glass structure

Small size for aesthetics

With gaskets to prevent glass damage

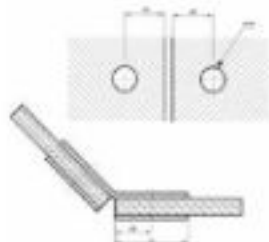
Glass thickness 8mm / 12mm

Made from casting & thickness of connector is 5mm

Material: SS 304

Finish: SSS/PSS

Code	Profile	Qty.	Weight (each)	MSRP
UGC-02-135	135°	1 pc.	80 gms	₹ 1,100/-
UGC-02-90	90°	1 pc.	80 gms	₹ 1,100/-



OGC-03

Glass to Glass 90° connector

Specification / Features:

Strengthening glass structure

Small size for aesthetics

With gaskets to prevent glass damage

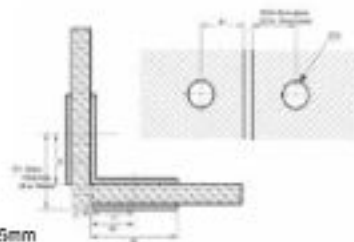
Glass thickness 8mm / 12mm

Made from casting & thickness of connector is 5mm

Material: SS 304

Finish: SSS/PSS

Code	Profile	Qty.	Weight (each)	MSRP
UGC-03-90	90°	1 pc.	80 gms	₹ 1,100/-
UGC-03-135	135°	1 pc.	80 gms	₹ 1,100/-



Glass Connectors: SS - 304

QGC-05

Glass to Glass 180° connector

Specification / Features:

Strengthening glass structure

Small size for aesthetics

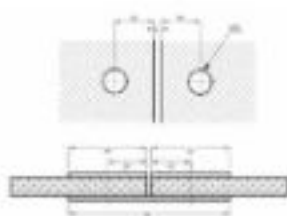
With gaskets to prevent glass damage

Glass thickness 8mm / 12mm

Made from casting & thickness of connector is 5mm

Material: SS 304

Finish: SS/PSS



Code	Finish	Qty	Master Pack	MOQ
QGC-05-001	PSS	1 pc	80 pcs	1, 100-
QGC-05-002	SS	1 pc	80 pcs	1, 100-



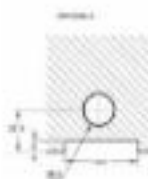
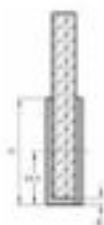
Glass Connectors: SS - 304

OGC-1S

Floor Mounting Glass Connector

Specification / Features:

- Strengthening glass structure
- Firm holding with floor
- Small size for aesthetics
- With gaskets to prevent glass damage
- Glass thickness 8mm / 12mm
- Made from SS sheet of thickness 3mm
- Material: SS 304
- Finish: PPS/SSS



OGC-1S (mm)



Code	Finish	Qty	Module (mm)	MRP (₹)
OGC-1S-120	120	1 Pz	100 Pcs	₹ 240/-
OGC-1S-125	125	1 Pz	100 Pcs	₹ 230/-
OGC-1S-162*VU	162*VU	1 Pz	100 Pcs	₹ 650/-
OGC-1S-121*VU	121*VU	1 Pz	100 Pcs	₹ 650/-
OGC-1S-168*VU	168*VU	1 Pz	100 Pcs	₹ 810/-

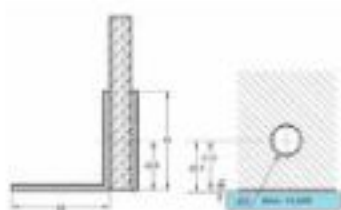


OGC-4S

Wall to Glass 90° connector

Specification / Features:

- Strengthening glass structure
- Small size for aesthetics
- With gaskets to prevent glass damage
- Glass thickness 8mm / 12mm
- Made from SS sheet of thickness 3mm
- Material: SS 304
- Finish: PPS/SSS



OGC-4S (mm)



Code	Finish	Qty	Module (mm)	MRP (₹)
OGC-4S-120	120	1 Pz	100 Pcs	₹ 270/-
OGC-4S-125	125	1 Pz	100 Pcs	₹ 260/-
OGC-4S-162*VU	162*VU	1 Pz	100 Pcs	₹ 650/-
OGC-4S-121*VU	121*VU	1 Pz	100 Pcs	₹ 750/-
OGC-4S-168*VU	168*VU	1 Pz	100 Pcs	₹ 730/-



Glass Connectors: SS - 304

OGC- 2S

Glass To Glass 135° Connector

Specification / Features:

- Strengthening glass structure
- Small size for aesthetics
- With gaskets to prevent glass damage
- Glass thickness 8mm / 12mm
- Made from SS sheet of thickness 8mm
- Material: SS 304
- Finish: PBR/SSR



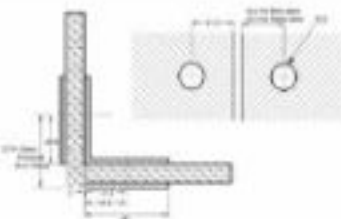
Code	Finish	Qty	Material Pack	MSD*
UJG-2S-125	125	1 pc	100 pcs	₹ 380/-
UJG-2S-125	225	1 pc	100 pcs	₹ 380/-

OGC- 3S

Glass to Glass 90° connector

Specification / Features:

- Strengthening glass structure
- Small size for aesthetics
- With gaskets to prevent glass damage
- Glass thickness 8mm / 12mm
- Made from SS sheet of thickness 8mm
- Material: SS 304
- Finish: PBR/SSR



Code	Finish	Qty	Material Pack	MSD*
UJG-3S-125	125	1 pc	100 pcs	₹ 380/-
UJG-3S-125	225	1 pc	100 pcs	₹ 380/-

Glass Connectors: SS - 304

GGC- 58

Glass to Glass 180° connector

Specification / Features:

- Strengthening glass structure
- Small size for aesthetics
- With gaskets to prevent glass damage
- Glass thickness 8mm / 12mm
- Made from full sheet of thickness 8mm
- Material: SS 304
- Finish: PPS/SSS



Code	Finish	Qty	Material	Weight
GGC-58-1100	PPS	1 Pz	100 Pcs	€ 340,-
GGC-58-305	SSS	1 Pz	100 Pcs	€ 390,-
GGC-58-182*VU	182*VU	1 Pz	100 Pcs	€ 830,-
GGC-58-12*VU	12*VU	1 Pz	100 Pcs	€ 830,-
GGC-58-18*VU	18*VU	1 Pz	100 Pcs	€ 870,-



Glass Door Knobs & Shower Knight Head Accessories



Glass Door Knobs & Shower Knight Head Accessories

QGK-001

Shower Door Knob

Specification / Features:

Glass Door Knob

With gaskets to prevent glass damage

Block construction / Perfect handling design

Material: SS 304

Finish: P36/SS3



Code	Price	Qty.	Shower Truck	MSRP
LJ26-001-150	1725	1 pc.	NO pack	17250-
LJ26-001-225	2225	1 pc.	NO pack	17250-



QGK-002

Shower Door Knob

Specification / Features:

Glass Door Knob

With gaskets to prevent glass damage

Block construction / Perfect handling design

Material: SS 304

Finish: P36/SS3



Code	Price	Qty.	Shower Truck	MSRP
LJ26-002-150	1725	1 pc.	NO pack	17250-
LJ26-002-225	2225	1 pc.	NO pack	17250-



Glass Door Knobs & Shower Knight Head Accessories

QGK-003

Shower Door Knob

Specification / Features:

Glass Door Knob

With gaskets to prevent glass damage

Stick construction / Perfect handling design

Material: SS 304

Finish: P55/SS5



Code	Price	Qty.	Master Pack	MSD*
UJ26-003-1525	1525	1 pc	NO pack	€ 1520
UJ26-003-2225	2225	1 pc	NO pack	€ 2220



QSB - 01

To Hold the Pipe with Wall for Glass Stabilization

Specification / Features:

Terminating Sleeve/Socket

Perfect radius for the pipe

Grab screws to hold the pipe

Film coating with wall

Material: SS 304

Finish: P55/SS5



Code	Price	Qty.	Master Pack	MSD*
UJ26-014-1525	1525	1 Pc	NO Pack	€ 1520
UJ26-014-2225	2225	1 Pc	NO Pack	€ 2220
UJ26-014-16275U	16275	1 Pc	NO Pack	€ 1,6270
UJ26-014-2175U	2175	1 Pc	NO Pack	€ 2,1750
UJ26-014-2675U	2675	1 Pc	NO Pack	€ 2,6750

Glass Door Knobs & Shower Knight Head Accessories

QSB - 03

To Support Reinforcing Pipe with Glass for Glass Stabilization

Specification / Features:

Reinforcing Bar Support

Perfect radius for the pipe

Through hole for the pipe

Gas fill use to prevent the glass from breakage

Material: SS 304

Finish: PPS/SSS



Code	Price	Qty	Master Pack	MSD*
QSB-03-1525	1525	1 Pcs	NO Pack	₹ 230/-
QSB-03-2225	2225	1 Pcs	NO Pack	₹ 690/-
QSB-03-1525VU	1525VU	1 Pcs	NO Pack	₹ 1,130/-
QSB-03-2225VU	2225VU	1 Pcs	NO Pack	₹ 1,730/-
QSB-03-2225VU	2225VU	1 Pcs	NO Pack	₹ 1,040/-

QSB- 04

To Hold the Pipe with Glass for Glass Stabilization

Specification / Features:

Reinforcing Bar Support

Grab screws to hold the pipe

Blind hole on one end

Gas fill use to prevent the glass from breakage

Material: SS 304

Finish: PPS/SSS



Code	Price	Qty	Master Pack	MSD*
QSB-04-1525	1525	1 pcs	NO pack	₹ 230/-
QSB-04-2225	2225	1 pcs	NO pack	₹ 700/-

QSB - 05

To Join the Pipes at any Angle for Glass Stabilization

Specification / Features:

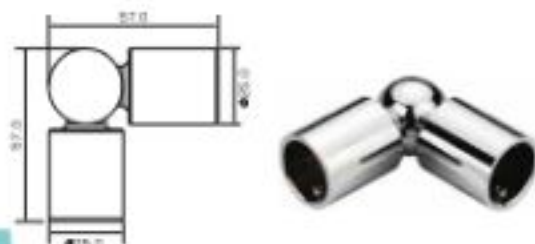
Pipe Connector flexible elbow joint

Grab screws to hold the pipe

Adjustable at any angle

Material: SS 304

Finish: PPS/SSS



Code	Price	Qty	Master Pack	MSD*
QSB-05-1525	1525	1 Pcs	NO Pack	₹ 870/-
QSB-05-2225	2225	1 Pcs	NO Pack	₹ 620/-
QSB-05-1525VU	1525VU	1 Pcs	NO Pack	₹ 1,620/-
QSB-05-2225VU	2225VU	1 Pcs	NO Pack	₹ 1,620/-
QSB-05-2225VU	2225VU	1 Pcs	NO Pack	₹ 1,620/-

Glass Door Knobs & Shower Knight Head Accessories

OSB- 06

Connector To Join Three Pipes (T Type Joint)

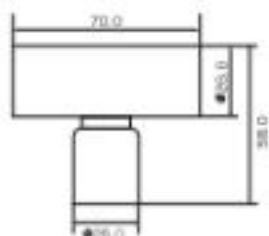
Specification / Features:

T shape connector to join pipes.

Ideal for making shower or bathroom partitions using Knight head accessories.

Material: SS 304

Finish: P65/S65



Code	Finish	Qty.	Master Pack Size	MSRP
LI08-06-1725	P725	1 pc	40 pcs	₹ 1,800/-
LI08-06-2225	S225	1 pc	40 pcs	₹ 180/-

OSB - 07

Reinforcing Bar / Tube Dia 19mm

Specification / Features:

To providing extra support to Glass panel with the help of Pipe Dia 19mm

Length available from 2 Mtr to 8 Mtr

Material: SS 304

Finish: S65/P65

Code	Finish	Qty.	MSRP
LI08-11-1725-2" 19	P725	1 Pc	₹ 2,200/-
LI08-11-1725-1" 19	P725	1 Pc	₹ 3,400/-
LI08-11-2225-2" 19	S225	1 Pc	₹ 2,100/-
LI08-11-2225-1" 19	S225	1 Pc	₹ 3,400/-
LI08-11-1827-9U-2" 19	P827-9U	1 Pc	₹ 4,000/-
LI08-11-1827-9U-2" 19	S827-9U	1 Pc	₹ 4,000/-
LI08-11-2817-9U-2" 19	P817-9U	1 Pc	₹ 3,800/-



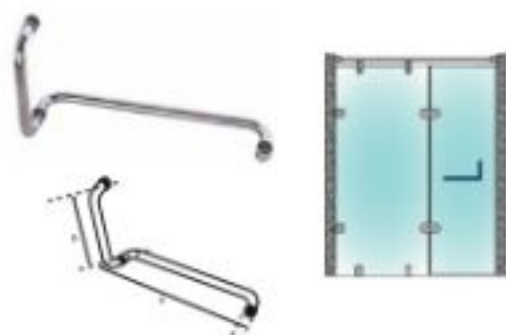
Shower Towel Bars/Handle

QGH-01

Shower Door Handle with Towel Bar

Specification / Features:

- Towel Bar Handle/Shower handle
- With gaskets to prevent glass damage
- Perfect handling design | Sleek construction
- Towel bar out side and handle inside
- Material: SS 304
- Finish: P55/S55



Code	Finish	L221 (A)	L221 (B)	PC12.12 (C)	PC12.12 (D)	L221 (E)	Material	MSD*
LC2H-01-125-460*150*15	P55	460mm	150mm	12mm	18mm	1 pc	10 pcs	₹ 2,200/-
LC2H-01-125-460*250*15	P55	460mm	250mm	12mm	18mm	1 pc	10 pcs	₹ 2,200/-
LC2H-01-125-460*150*15	S55	460mm	150mm	12mm	18mm	1 pc	10 pcs	₹ 2,200/-
LC2H-01-125-460*250*15	S55	460mm	250mm	12mm	18mm	1 pc	10 pcs	₹ 2,200/-
LC2H-01-162*VD-450*150*15	162*VD	460mm	150mm	12mm	18mm	1 pc	10 pcs	₹ 1,400/-
LC2H-01-170*VD-460*150*15	170*VD	460mm	150mm	12mm	18mm	1 pc	10 pcs	₹ 1,400/-
LC2H-01-250*VD-450*150*15	250*VD	460mm	150mm	12mm	18mm	1 pc	10 pcs	₹ 1,700/-

QGH-02

Shower Door SD Handle with Towel Bar

Specification / Features:

- Towel Bar Handle
- With gaskets to prevent glass damage
- Perfect handling design | Sleek construction
- Towel bar out side and handle inside
- Material: SS 304
- Finish: P55/S55



Code	Finish	L221 (A)	L221 (B)	PC12.12 (C)	L221 (D)	L221 (E)	Material	MSD*
LC2H-02-125-460*150*20	P55	460mm	150mm	12mm	20mm & 20mm	1 pc	10 pcs	₹ 2,000/-
LC2H-02-125-460*150*20	S55	460mm	150mm	12mm	20mm & 20mm	1 pc	10 pcs	₹ 2,000/-



PVC Seals





SPECIFICATIONS

Made from superior quality co-extruded PVC materials for long life.

- Resistant to extreme temperature fluctuations.
- Will not crack or harden over prolonged usage.
- Useful for any kind of glass to glass or surface to glass contact.
- Precision engineering for smooth and secure glass gripping.
- High transparency for elegant looks.
- 2.2 Meter length per pc.

PVC Seals / Plastic Profiles

QPS - 001

Plastic Seal For Glass (8mm, 10mm, 12mm)
Used between fixed panel and door panel
Control 180° seal
Ideal for preventing water spillage in single action doors

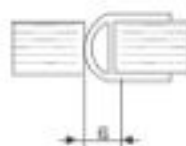
Code	Material Pack	Qty.	MSD*
LHPS-001-8	100 pcs	1 pc	₹ 250/-
LHPS-001-10	100 pcs	1 pc	₹ 250/-
LHPS-001-12	100 pcs	1 pc	₹ 250/-



QPS- 002

Plastic Seal For Glass (8mm, 10mm, 12mm)
Used between fixed panel and door panel
Control 180° seal
Ideal for preventing collision between door panel & fixed glass

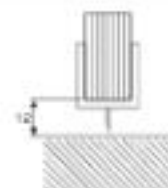
Code	Material Pack	Qty.	MSD*
LHPS-002-8	100 pcs	1 pc	₹ 250/-
LHPS-002-10	100 pcs	1 pc	₹ 250/-
LHPS-002-12	100 pcs	1 pc	₹ 250/-



QPS- 003

Plastic Seal For Glass (8mm, 10mm, 12mm)
Soft lip
Used between a glass door and a wall / glass door
Ideal for preventing water spillage in double action doors

Code	Material Pack	Qty.	MSD*
LHPS-003-8	100 pcs	1 pc	₹ 250/-
LHPS-003-10	100 pcs	1 pc	₹ 250/-
LHPS-003-12	100 pcs	1 pc	₹ 250/-

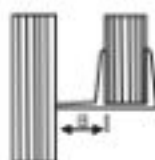


PVC Seals / Plastic Profiles

QPS- 004

Plastic Seal For Glass (8mm, 10mm, 12mm)
Used between Floor Panel / wall and Glass door
Ideal for door side water proofing
Specially Used In Sliding Shower Doors

Code	Material Part No.	Qty.	MRP
LHPS-004-8	100 pcs	1 pc	₹ 250/-
LHPS-004-10	100 pcs	1 pc	₹ 250/-
LHPS-004-12	100 pcs	1 pc	₹ 250/-



QPS- 005

Plastic Seal For Glass (8mm, 10mm, 12mm)
Used between a glass door and a wall | Soft lip
Ideal for preventing water spillage in single action doors

Code	Material Part No.	Qty.	MRP
LHPS-005-8	100 pcs	1 pc	₹ 250/-
LHPS-005-10	100 pcs	1 pc	₹ 250/-
LHPS-005-12	100 pcs	1 pc	₹ 250/-



QPS- 006

Magnetic Plastic Seal For Swing /Sliding Glass Door At 90°
(8mm, 10mm, 12mm)
Used to seal the joint between two sliding/swing glass door fitted at 90° angle | Magnetic seal ensures doors stay in place | Supplied in pairs

Code	Material Part No.	Qty.	MRP
LHPS-006-8	50 pcs	1 pc	₹ 1,000/-
LHPS-006-10	50 pcs	1 pc	₹ 1,000/-
LHPS-006-12	50 pcs	1 pc	₹ 1,000/-



PVC Seals / Plastic Profiles

OPS- 007

Magnetic Plastic Seal For Swing /Sliding Glass Door At 180°
(8mm, 10mm, 12mm)

Used to seal the joint between two sliding/swing glass doors fitted at 180° angle | Magnetic seal ensures doors stay in place | Supplied in pairs.

Code	Material Type	Qty	MRP
UPS483-8	50 pack	1 pc	₹ 1,020/-
UPS483-10	50 pack	1 pc	₹ 1,020/-
UPS483-12	50 pack	1 pc	₹ 1,020/-



OPS- 008

Magnetic Plastic Seal For Swing /Sliding Glass Door At 135°
(8mm, 10mm, 12mm)

Used to seal the joint between two sliding/swing glass doors fitted at 135° angle | Magnetic seal ensures doors stay in place | Supplied in pairs.

Code	Material Type	Qty	MRP
UPS485-8	50 pack	1 pc	₹ 1,020/-
UPS485-10	50 pack	1 pc	₹ 1,020/-
UPS485-12	50 pack	1 pc	₹ 1,020/-



Sliding Systems



Sliding Systems



STANDARD GLASS SLIDING & SLIDING DOORS

A sliding glass door or sliding door in architecture and construction, is a large glass opening in a structure that provides door access from a room to the outdoors, fresh air, & copious natural light.

Architectural Glass Sliding Doors: Sliding doors are used for the doors that move horizontally, thus the floor space is saved and that can be used to add a home decorative piece of furniture without interfering with the door movement.

Sliding Systems

OSLD-001 A

GLASS SLIDING FITTINGS

For 8 mm to 12mm Glass

Wheels made from Nylon protected ball bearing

Stainless Steel Body | Finish: SSS

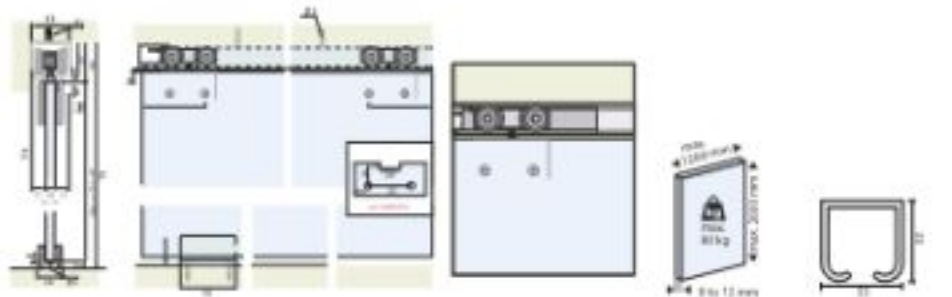
Weight Capacity: 80 kgs/panel

Code	Finish	Qty.	Wheel Pack	MSD*
LHSL-001A-SSS	SSS	1 set	20 sets	74,100/-

1201 - 1811

Aluminium window weight

top track non-drilled



OSLD-001 B

GLASS SLIDING FITTINGS

For 8 mm to 12mm Glass

Wheels made from Nylon protected ball bearing

Stainless Steel Body | Finish: SSS

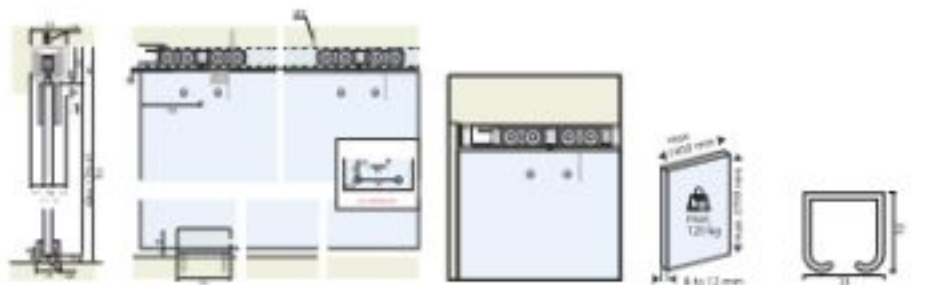
Weight Capacity: 120 kgs/panel

Code	Finish	Qty.	Wheel Pack	MSD*
LHSL-001B-SSS	SSS	1 set	20 sets	74,100/-

1201 - 1811

Aluminium window weight

top track non-drilled



Sliding Systems

OSLD- 003 A

GLASS SLIDING FITTINGS

Nylon Wheels

For 10 mm to 12mm Glass

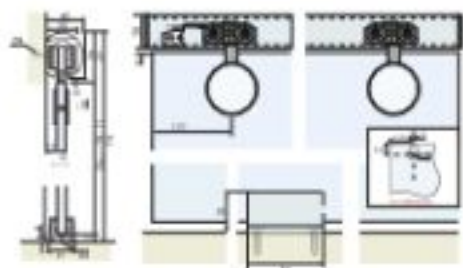
Weight Capacity: 80 kgs/panel | Finish: SSS | P55

Code	Profile	Life	Wheels / Track / Roll*	Price
LHSLU-003A-1725	P55	1 set	21 sets	₹ 9,800/-
LHSLU-003A-2225	SSS	1 set	21 sets	₹ 9,800/-

1725 - 184 / 184A / 184B

Aluminum extruded angle

top track non-drilled



OSLD - 003 B

GLASS SLIDING FITTINGS

Nylon Wheels

For 10 mm to 12mm Glass

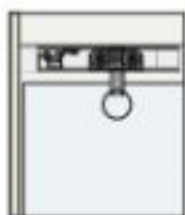
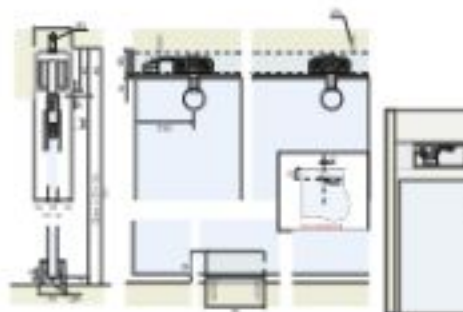
Weight Capacity: 45 kgs/panel | Finish: SSS | P55

Code	Profile	Life	Wheels / Track / Roll*	Price
LHSLU-003B-1725	P55	1 set	21 sets	₹ 4,000/-
LHSLU-003B-2225	SSS	1 set	21 sets	₹ 4,200/-

1725 - 184 / 184A / 184B

Aluminum extruded angle

top track non-drilled



Sliding Systems

OSLD- 004

GLASS SLIDING FITTINGS

Nylon Wheels

For 10 mm to 12mm Glass

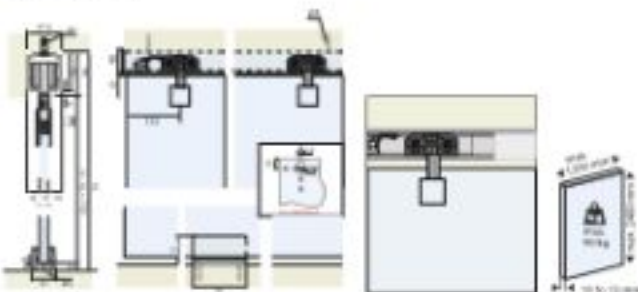
Weight Capacity: 45 kgs/panel Finish: R55 | R58

Code	Finish	Cty.	Items/Box	MSRP
OSLD-004-1020	R55	1 set	20 sets	₹ 5,000/-
OSLD-004-1025	R58	1 set	20 sets	₹ 4,800/-

1021 - 104 / 104A / 104B

Aluminium extruded profile

Top track is optional



Sliding Systems



Sliding Door Roller
2 Pcs



Door Stopper
2 Pcs



Floor Guide
2 Pcs



Tall Floor Guide
1 Pc



Clamp Fixing For Track
Connection with Glass
2 Pcs



OSLD-006

Sliding Door Set Fittings

Specification / Features:

Shower sliding systems shower cubicles & internal doors | All fittings in satin finish for aesthetic looks | Assembly parts made with genuine stainless steel | Height adjustable as per actual site conditions | Suitable for bathroom and office sliding applications fittings ideal for use in glass 10-12mm

Track is optional, need to order separately

Material: SS304 | Finish: SS6

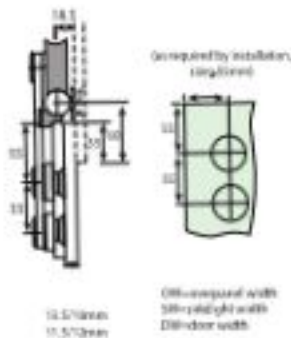
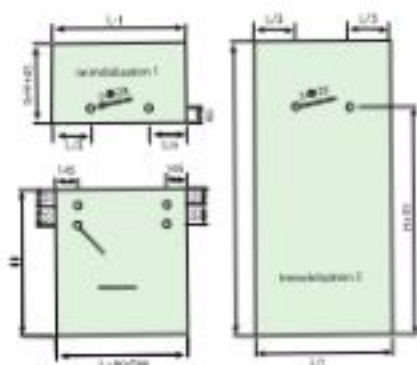


Guide Roll
Installation Diagram



Wheel Installation
Diagram

Code	Model	Qty	Weight (Kgs)	MSRP
L1162-006-1020	1020	1 set	10 kgs	₹ 13,300+



Sliding Systems

WHAT MAKES US STAND APART



The aluminum top track profile and knob clamp roller enables the smooth and easy sliding experience

SHOWER SCREEN SLIDING SYSTEM (FRONT ENTRY) Q-SSSL-SYS-180-FE-2M-CP

SPECIFICATIONS FRONT ENTRY SYSTEM






- Max. Door Weight	: 45kg
- Max. Door Width	: 750mm - 800mm
- Max. Door Height	: 2000mm
- Max. Glass Thickness	: 8mm, 10mm

SUITABLE FOR

- 180 degree front entry
- 8mm - 10mm thick glass: 45kg (max)

MRP

₹ 8,990/-

	DESCRIPTION	QUANTITY	UNIT
	Polished Anodized Aluminium Top Track	1 Pieces of 2 Meters	Meter
	Ø38 Sliding Door Roller (Mirror Finish)	2 Pieces	Numbers
	Stainless Steel Mounting Bracket (Mirror Finish)	2 Pieces (LH & RH)	Numbers
	Stainless Steel End Stopper (Mirror Finish)	2 Pieces	Numbers
	Stainless Steel Floor Guide (Mirror Finish)	1 Pieces	Numbers

Sliding Systems

SHOWER SCREEN SLIDING SYSTEM (CORNER ENTRY) Q-SSSL-SYS-90-CE 1.65M-CP

SPECIFICATIONS CORNER ENTRY SYSTEM

- Max. Door Weight	:	45kg
- Max. Door Width	:	750mm - 800mm
- Max. Door Height	:	2000mm
- Max. Glass Thickness	:	8mm, 10mm

SUITABLE FOR

- 90 degree corner entry
- 8mm - 10mm thick glass: 45kg (max)

MRP

₹ 15,970/-

	DESCRIPTION	QUANTY	UNIT
	Polished Anodized Aluminium Top Track	2 Pieces of 1.65 Meters	Meter
	Ø38 Sliding Door Roller (Mirror Finish)	4 Pieces	Numbers
	Stainless Steel Mounting Bracket (Mirror Finish)	2 Pieces (LH & RH)	Numbers
	Stainless Steel End Stopper (Mirror Finish)	2 Pieces	Numbers
	Stainless Steel Floor Guide (Mirror Finish)	2 Pieces	Numbers
	Track 90 Degree Elbow (Mirror Finish)	1 Piece	Numbers

Sliding Systems

OSLDA - 001

Door Stopper
Material: PVC
Finish: White

Code	Finish	Qty.	Master Pack	MSD*
LHSLDA-001-F50	PVL	1 set	10 sets	€ 480+



OSLDA-002

Floor Guide (for 10mm to 12mm glass)
Material: SS 304
Finish: PSS/SSS

Code	Finish	Qty.	Master Pack	MSD*
LHSLDA-002-F50	P50	1 set	10 sets	€ 760+
LHSLDA-002-S20	S20	1 set	10 sets	€ 700+



OSLDA - 003

Joint/Bond to connect two Tracks at 90° Angle.

Specification / Features:

Roof Track Connector with Glass

Glass to track end connector | Rectangular design

With grub screws to prevent relative movement

Material: SS 304

Finish: SSS/PSS

Code	Finish	Qty.	Master Pack	MSD*
LHSLDA-003-F50	P50	1 set	10 sets	€ 1,310
LHSLDA-003-S20	S20	1 set	10 sets	€ 1,310



OSLDA - 004

L clamp for fixing sliding track in to wall

Material: Stainless Steel 304

Finish: SSS

Code	Finish	Qty.	Master Pack	MSD*
LHSLDA-004-S20	S20	1 set	10 sets	€ 500+



Sliding Door Accessories

OSLDA - 005

Suitable for OMC 004 End Cap

Material: PVC

Finish: Black

Code	Finish	Qty.	Stock Pack	MSRP
LHSLDA-005-BLACK	PVC	1 pc	100 pcs	₹ 320/-



OSLDA - 007

Glass to Track Connector

Specification / Features:

Track Connector with glass

For mounting with glass

Material: SS 304

Finish: SS

Code	Finish	Qty.	Stock Pack	MSRP
LHSLDA-007-SS	SS	1 pc	100 pcs	₹ 650/-



OSLDA - 008

Wall to Track Connector

Specification / Features:

Roof Track Connector with Wall

For mounting with wall | Rectangular design

With two grub screws to prevent relative movement

Material: SS 304

Finish: PSS/SSS

Code	Finish	Qty.	Stock Pack	MSRP
LHSLDA-008-150	PSS	1 pc	50 pcs	₹ 710/-
LHSLDA-008-220	SSS	1 pc	50 pcs	₹ 680/-



OSLDA-009

Track to Track Connector 90° | Glass to Track End Connector

Specification / Features:

Roof Track Connector with Glass | Glass to track and connector

Rectangular design | With grub screws to prevent relative movement

Material: SS 304

Finish: PSS/SSS

Code	Finish	Qty.	Stock Pack	MSRP
LHSLDA-009-150	PSS	1 pc	50 pcs	₹ 680/-
LHSLDA-009-220	SSS	1 pc	50 pcs	₹ 650/-



Sliding Door Accessories

OSLDA-011

Round Tube Track Dia 25 Mm

Specification / Features:

Round tube Track | Round in design | Available in 2 & 3 Mtr. Length
Stainless Steel Grade 304 | Finish: SS

Code	Finish	L/ft.	Material Pack	MSD*
OSLDA-011-0201-2F2b	SS20	1 pc	100 xml	₹ 3,000/-
OSLDA-011-0201-3F2b	SS20	1 pc	100 xml	₹ 4,100/-



OSLDA-012

Rectangular Track (10*80mm)

Specification / Features:

Rectangular design | Available in 2 & 3 Mtr. Length
Stainless Steel Grade 304
Finish: PSR

Code	Finish	L/ft.	MSD*
OSLDA-012-1520-2	PSR	1 pc	₹ 3,350/-
OSLDA-012-1520-3	PSR	1 pc	₹ 4,000/-



Q-AGP

3 Mtr. | Interior Glass Partitions/Glazing Profile

Interior Office Partitions with multitude of panel inserts, Glass, MDF, Lamination, Plywood, Gypsum etc.

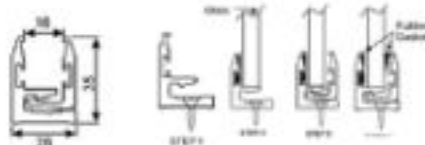
Shop Fronts with maximum visibility and security

Suitable for 12mm Glass

Gasket used to protect glass from damage

Material: Aluminium Alloy | Fixed Windows

Code	Finish	L/ft.	Material Pack	MSD*
Q-AGP-0000	Anodized	1 pc	10 pcs	₹ 4,800/-
Q-AGP-0000	Greenagrip	1 pc	10 pcs	₹ 4,800/-



Sliding Folding Glass Doors & Aluminium Tracks



Sliding Folding Glass Doors & Aluminium Tracks



Sliding Folding Door System can be a very attractive and useful use of space, helping to create a contemporary design in your home and office. The system enables making a glass wall which can be slides and folded to one side when required, enabling 100% walk able opening of the doorway.

Sliding Folding Glass Doors & Aluminium Tracks

OSLD-3000 SERIES



Made from Stainless Steel | Max. door height: 2400 mm | Max. door width: 800 mm | Max. door weight 75kg

Suitable for glass thickness 10 & 12 mm | Smooth and noise free movement of rollers in track | Material: SS 304



U-AZ-3001



U-AZ-3002



U-AZ-3003



U-AZ-3004



U-AZ-3005



UBPL-6A



U-AZ-3015



U-AZ-3017

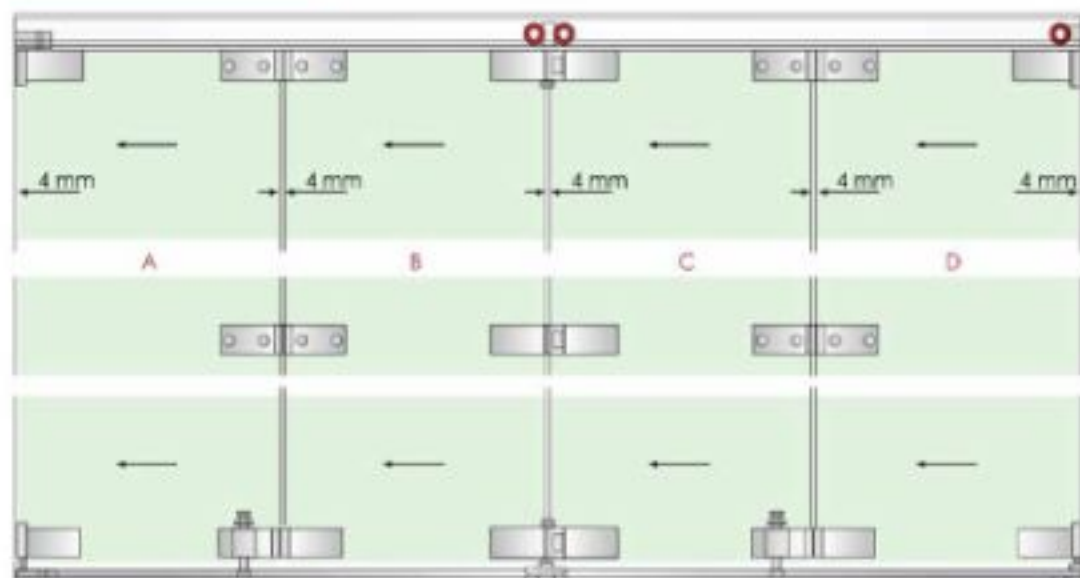


U-PS-002

CODE	O AZ 3001	O AZ 3002	O AZ 3003	O AZ 3004	O AZ 3005	O AZ 3017	O AZ 3018	OBPL 6A	OPS 002
PRICE	3,000,-	3,100,-	3,200,-	3,300,-	3,400,-	3,500,-	3,600,-	11,000,-	200,-
Por 2 (Glass/Panel)	01 Set	01 Set	-	01 Set	-	1L-3LN Mb	1L-3LN Mb	1 Pkx	1 Pkx
Por 3 (Glass/Panel)	01 Set	01 Set	01 Set	-	01 Set	1L-3LN Mb	1L-3LN Mb	1 Pkx	1 Pkx
Por 4 (Glass/Panel)	01 Set	02 Set	01 Set	01 Set	-	1L-3LN Mb	1L-3LN Mb	1 Pkx	1 Pkx
Por 5 (Glass/Panel)	01 Set	02 Set	02 Set	-	01 Set	2L-3LN Mb	2L-3LN Mb	1 Pkx	1 Pkx
Por 6 (Glass/Panel)	01 Set	03 Set	02 Set	01 Set	-	2L-3LN Mb	2L-3LN Mb	1 Pkx	1 Pkx

Sliding Folding Glass Doors & Aluminium Tracks

OSLD-3100 SERIES



Made from Stainless Steel | Max. door height: 3000 mm | Max. door width: 800 mm | Max. door weight 90kg
Suitable for glass thickness 10 & 12 mm | Smooth and noise free movement of rollers in track | Material: SS 304



O-AZ-3001



O-AZ-3010



O-AZ-3102



O-AZ-3004



O-AZ-3005



OSPL-6A



O-AZ-3015



O-AZ-3017

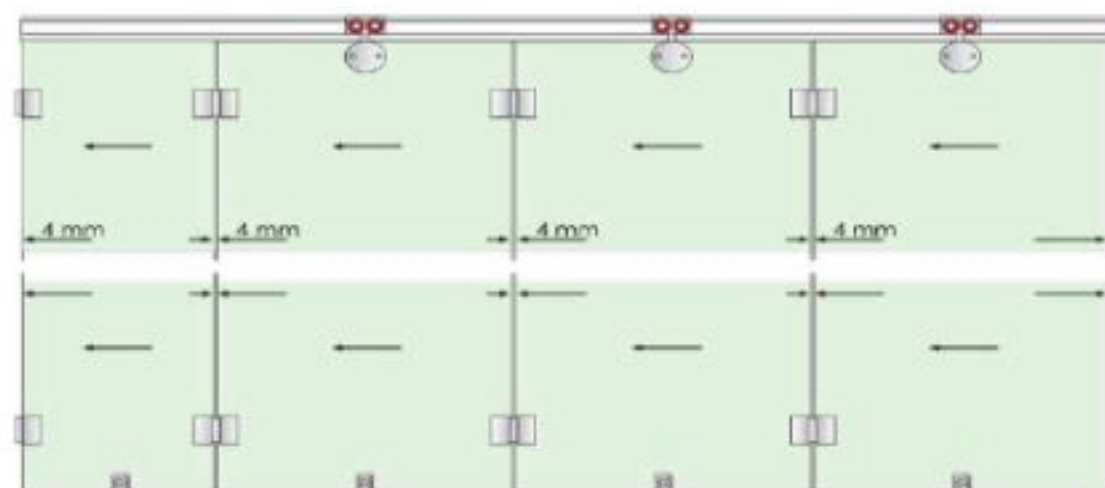


O-AZ-3002

CODE	O AZ-3001	O AZ-3002	O AZ-3005	O AZ-3004	O AZ-3005	O AZ-3017	O AZ-3015	OSPL-6A	OPS-002
PRICE	3,000-	3,000-	12,000-	3,000-	6,400-	12,000-	1,000-	11,000-	250-
Pos 2 (2door / 1'level)	01 5ml	01 5ml	-	01 5ml	-	1L-3/8 Mb	1L-0/8 Mb	1 15x	1 15x
Pos 3 (3door / 1'level)	01 5ml	01 5ml	01 5ml	-	01 5ml	1L-3/8 Mb	1L-0/8 Mb	1 15x	1 15x
Pos 4 (4door / 1'level)	01 5ml	02 15ml	01 5ml	01 5ml	-	1L-3/8 Mb	1L-0/8 Mb	1 15x	1 15x
Pos 5 (5door / 1'level)	01 5ml	02 15ml	02 15ml	-	01 5ml	2L-3/8 Mb	2L-0/8 Mb	1 15x	1 15x
Pos 6 (6door / 1'level)	01 5ml	03 15ml	02 15ml	01 5ml	-	2L-3/8 Mb	2L-0/8 Mb	1 15x	1 15x

Sliding Folding Glass Doors & Aluminium Tracks

QSLD- 3300 SERIES



Made from Stainless Steel | Max. door height: 8000 mm | Max. door width: 800 mm | Max. door weight 75kg
Suitable for glass thickness 10 & 12 mm | Smooth and noise-free movement of rollers in track | Material: SS 304



O-AZ-0001

O-AZ-0002

O-AZ-0003

OBGL-2A

O-AZ-0018

O-AZ-0004



OBPL-6A

O-AZ-0015

O-AZ-0017

OFS-002

CODE	O AZ 3001	O AZ 3002	O AZ 3003	O AZ 3004	O AZ 0018	OBGL 2A	OBPL 6A	OFS 002
PRICE	3,000/-	4,500/-	6,100/-	800/-	8,000/-	1,200/-	11,000/-	2500/-
For 2 Glass Panel	01 Nos	02 Nos	02 Nos	02 Nos	1L-3R Nos	02 Nos	1 Nos	1 Nos
For 3 Glass Panel	02 Nos	04 Nos	02 Nos	03 Nos	1L-3R Nos	03 Nos	1 Nos	1 Nos
For 4 Glass Panel	03 Nos	06 Nos	02 Nos	04 Nos	1L-3R Nos	04 Nos	1 Nos	1 Nos
For 5 Glass Panel	04 Nos	08 Nos	02 Nos	05 Nos	2L-3R Nos	05 Nos	1 Nos	1 Nos
For 6 Glass Panel	05 Nos	10 Nos	02 Nos	06 Nos	2L-3R Nos	06 Nos	1 Nos	1 Nos

Sliding Systems & Aluminium Tracks

QST - 001

Aluminium anodized single top track non-drilled

Available Sizes: 2400mm/3000mm

Finish: Aluminium Anodized



Code	Master Pack Qty.	SPU*
LS1-001-2400	10 pack	1 pc ₹ 4,210/-
LS1-001-3000	10 pack	1 pc ₹ 4,010/-

QST - 004

Aluminium anodized single top track non-drilled

Available Sizes: 2400mm/3000mm

Finish: Aluminium Anodized



Code	Master Pack Qty.	SPU*
LS1-004-2400	10 pack	1 pc ₹ 4,300/-
LS1-004-3000	10 pack	1 pc ₹ 4,100/-

QST-004 A

Aluminium anodized top track with side light fixing track non-drilled

Available Sizes: 3000mm

Finish: Aluminium Anodized



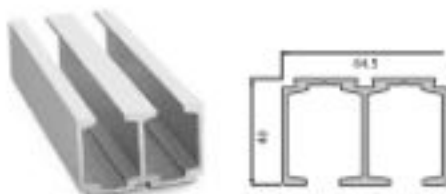
Code	Master Pack Qty.	SPU*
LS1-004A-3000	10 pack	1 pc ₹ 7,700/-

QST- 004 B

Aluminium anodized double top track non-drilled

Available Sizes: 3000mm

Finish: Aluminium Anodized



Code	Master Pack Qty.	SPU*
LS1-004B-3000	10 pack	1 pc ₹ 10,250/-



Qubn | Architectural
Hardware Fittings

Crafted with utmost passion and an eye for aesthetics, Cube brings to you a wide range of elegant, innovative and reliable security solutions.



SYMETRY | Kitchen and Furniture
Hardware Fittings

Unlock space in every corner with Symmetry. Smart and innovative kitchen and furniture fittings to make maximum out of your space and organise better.

arteza | Glass
Hardware Fittings

Arteza's sophisticated and ultra-practical design language blended with superior engineering and good looks makes it a perfect fit to your home decor. Arteza collection ranges from designer architectural glass fittings to smart door control systems.



agua | Inspiring
bath Concepts

Beauty is made of details. Be it the contours, form or finish, Agua makes everyday bathing experience exquisite with the collection personifying elegance and minimalism design.

QUBA ARCHITECTURAL PRODUCTS PVT. LTD.
Head Office: S-1, 7th Floor, Pinnacle Business Park,
Mahakali Caves Road, Near Ahura Centre, Andheri East, Mumbai - 400093.

arteza®
BY quba GROUP

EMAIL: info@qubaIndia.com | VISIT: www.qubaIndia.com | TOLL FREE: 1800 419 3330

Visit us:   